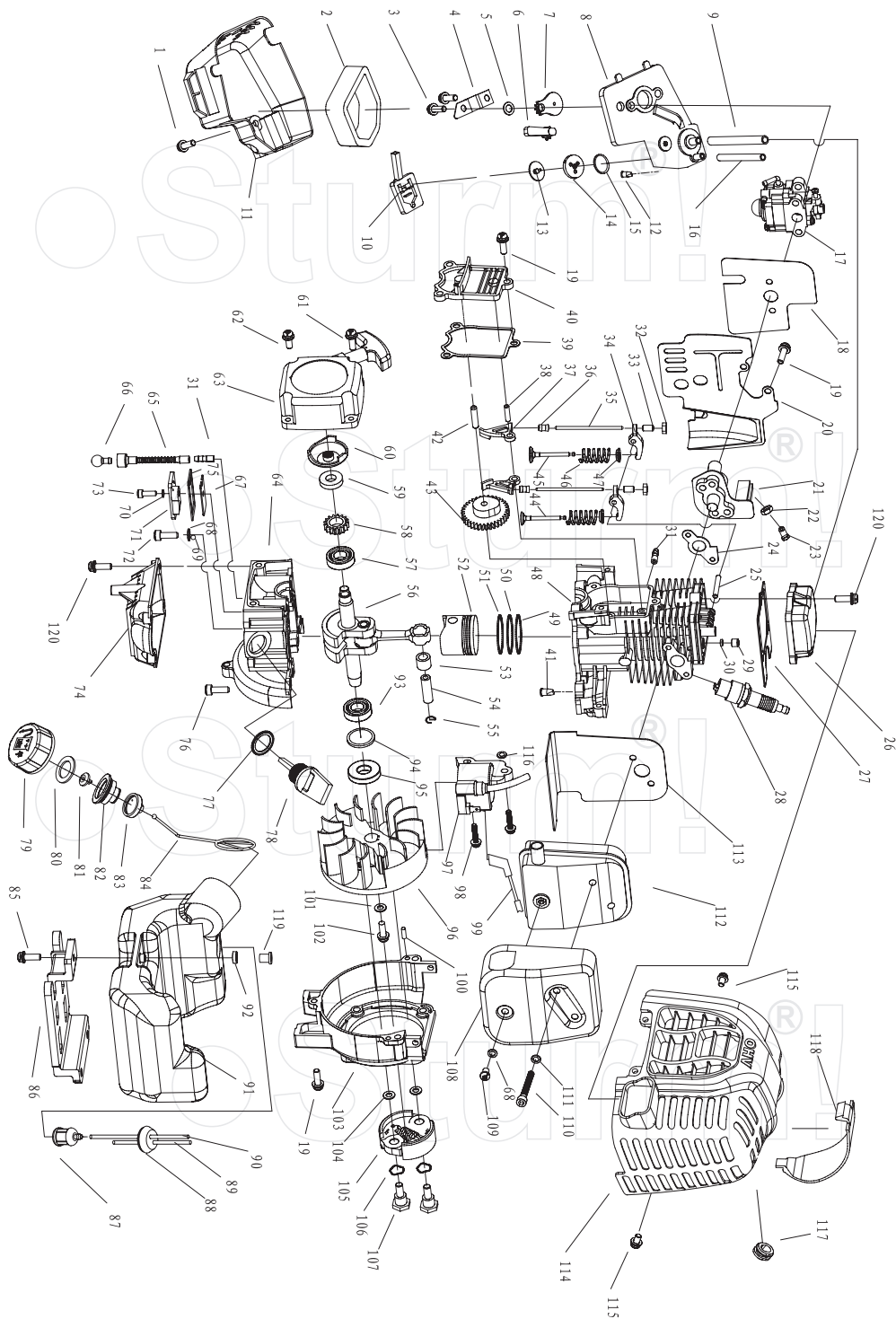


## BT89254

No.	DESCRIPTION	No.	DESCRIPTION	No.	DESCRIPTION
1	GEAR CASE ASS'Y	31	HARNESS CLAMP	61	HANDGRIP
2	STOP RING 26	32	CLAMP	62	SPRING
3	STOP RING 10	33	SCREW M5X20	63	BOX, RIGHT
4	BEARING 6000-2RZ/P5	34	NUT M5	64	SCREW ST2.9X18
5	PINION	35	CLUTCH COMP.	65	SCREW M5X30
6	STEEL PLATE CAP	36	CLUTCH DRUM COMP.	66	CABLE COMP.
7	SCREW M6X20	37	STOP RING 35	67	TUBE
8	WASHER 6	38	BEARING 6202-2RZ/P5	68	STOP BUTTON COMP
9	SCREW M5X12	39	STOP RING 15	69	HANDGRIP
10	BOLT M6X12	40	LINKER	70	SPRING
11	WASHER 6	41	RUBBER COVER	71	BOX, LEFT
12	GEAR CASE	42	SCREW M5X25	72	NYLON CUTTER HEAD
13	BLADE COVER	43	WASHER 5	73	CASE
14	BEARING 6000/P5	44	WASHER 5	74	LEFT NUT
15	GEAR	45	CLAMP B	75	WASHER
16	GEAR SHAFT	46	CLAMP A	76	SPRING
17	BEARING 6002-2RZ/P5	47	WIRE CLAMP BAND	77	CORD(Ø2.5X2100)
18	STOP RING 32	48	HARNESS ASS'Y	78	CORD HOLDER
19	HOLDER A	49	BOLT M5X25	79	PLATEN
20	HOLDER B	50	CAP,LOWER	80	COVER
21	WASHER 10	51	BRACKET	81	BRACKET
22	LEFT NUT	52	HANDLE	82	SCREW M5X30
23	PIN 2X16	53	GRIP LEFT	83	SAFETY GUARD
24	BLADE	54	CAP, UPPER	84	WASHER
25	PIPE COMP	55	HANDLE	85	SCREW M5X16
26	RUBBER COVER	56	LEVER ASS'Y	86	SCREW ST4.2X16
27	OIL-BEARING	57	SCREW ST2.9X13	87	GUARD
28	DRIVE SHAFT	58	BUTTON	88	BLADE
29	PIPE	59	SPRING	89	GUARD ASS'Y
30	HOLDER ASS'Y	60	CLOCK PIN		

RU091110-1



## Engine for BT89254

No.	DESCRIPTION	NO.	DESCRIPTION	NO.	DESCRIPTION
1	SCREW M5X12	41	AIR CHECK VALVE	81	INLET
2	FILTER NET	42	CAM AND GEAR SHAFT	82	INSIDE COVER
3	SCREW M5X70	43	CAM WHEEL	83	END COVER
4	BAFFLER	44	OUTPUT VALVE	84	CHAIN
5	GASKET	45	INPUT VALVE	85	SCREW M5X25
6	CHOKE HANDLE	46	SPRING	86	FUEL TANK NOG
7	CHOKE	47	SPRING SEAT	87	CLEANER
8	INSIDE COVER	48	CYLINDER	88	PLUG
9	RETURNING OIL PIPE	49	FIRST PISTON RING	89	FUEL PIPE
10	SEPERATOR	50	SECOND PISTON RING	90	FUEL PIPE
11	OUTSIDE COVER	51	OIL RING	91	FUEL TANK
12	AIR CHECK VALVE	52	PISTON	92	GASKET
13	AIR CHECK VALVE	53	NEEDLE BEARING	93	BEARING 6001/P6
14	AIR CHECK VALVE BRACING	54	PISTON PIN	94	CHECK RING
15	O RING	55	RING	95	SEAL
16	WINDPIPE	56	GRANK SHAFT	96	FLY WHEEL
17	CARBURETOR	57	BEARING 6001-RS/P5	97	COIL
18	GASKET	58	GEAR	98	SCREW M4X20
19	SCREW M5X16	59	SEAL	99	PARKING
20	ELIMINATING VANE	60	START REEL	100	PIN B4X8
21	ADMITTING PIPE	61	SCREW M4X16	101	GASKET
22	NUT M5	62	SCREW M4X12	102	SCREW M6X16-10.9
23	PIPE OF ACCELEROGRAPH CABLE	63	STARTER	103	FIY WHEEL COVER
24	ADMITTING GASKET	64	GRANK CASE	104	GASKET
25	ROCKER PAN	65	OIL PIPE	105	EXPANDER
26	CYLINDER COVER	66	BALL	106	GASKET
27	CYLINDER COVER GASKET	67	REED	107	SCREW PIN
28	SPARK PLUG	68	GASKET 5	108	MUFFLE COVER
29	SEALED COWLING	69	BALL	109	SCREW M5X6
30	GASKET	70	GASKET 4	110	SCREW M5X40
31	TIE-IN	71	BOARD	111	GASKET 5
32	ADJUST NUT	72	SCREW M5X30	112	MUFFLE
33	JIB SEAT	73	SCREW M4X10	113	GASKET
34	ROCKER	74	SUMP	114	CYLINDER COVER
35	JIB	75	BOARD	115	SCREW M5X10
36	JIB SEALING GASKET	76	SCREW M5X16	116	HEAT INSULATION MAT
37	BELOW ROCKER	77	O RING 14X3	117	PLUG
38	PIN	78	DIPSTICK	118	PLUG PROTECTIVE CASING
39	SIDE COVER GASKET	79	FUEL TANK LID	119	TANK TUBE
40	SIDE COVER	80	GASKET	120	SCREW M5X16