

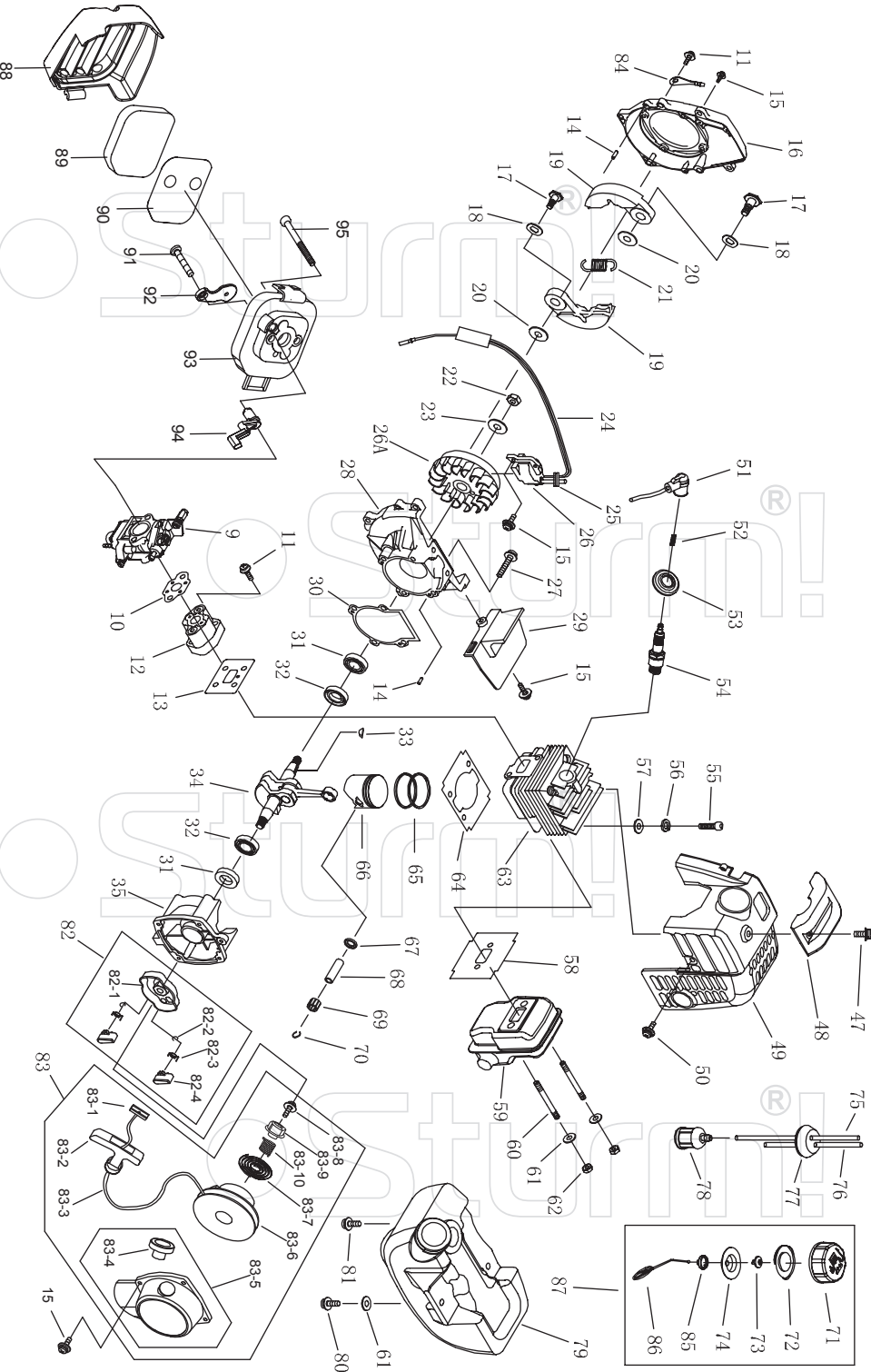
# BT8926L

NO.	DESCRIPTION	NO.	DESCRIPTION	NO.	DESCRIPTION
1	FLEXIBLE SHAFT	21	NUT	45	CLAMP
2	BRACKET	22	SCREW M5X16	46	RUBBER COVER
3	PIPE	23	BLADE	47	BOX,RIGHT
4	SCREW M5X25	24	HOLDER ASS'Y	48	CLAMP
5	HOLDER	29	CLUTCH COMP	49	TINE
6	SAFETY GUARD	30	CLUTCH DRUM COMP.	50	SPRING
7	NUT M5	31	STOP RING	51	SPRING
8	SCREW M5X8	32	BEARING 6202-2RS/P6	52	SPRING
9	WASHER	33	STOP RING	53	SAFETY LEVER
10	WASHER	34	LINKER	54	THROTTLE LEVER
11	BRACKET	35	RUBBER COVER	55	CABLE COMP
12	SCREW	36	SCREW	56	SCREW M5X25
13	COVER	37	SCREW	57	SCREW M5X25
14	NUT	38	WASHER	58	BOX,LEFT
15	ROPE COVER	39	WASHER	59	STOP SWITCH
16	ROPER HOLDER	40	CLAMP	60	TUBE
17	SPRING	41	CLAMP A		
18	ROPE SUPPORT	42	SCREW M6X20		
19	NYLON ROPE	43	BUSH		
20	CASE	44	LEVER ASS'Y		

ST20121030-02



# ENGINE FOR BT8926L



NO.	DESCRIPTION	NO.	DESCRIPTION	NO.	DESCRIPTION
9	CARBURETOR	50	SCREW M4X12	81	SCREW M5X16
10	GASKET	51	PLUG CAP	82	STARTER PULLEY ASS'Y
11	SCREW M5X20	52	CLICK SPRING	82-1	STARTER REEL
12	INLET MANIFOLD	53	PLUG COVER	82-2	STOP RING
13	CYLINDER WASHER	54	SPARK PLUG	82-3	STARTER PAWL SPRING
14	PIN	55	SCREW M5X20	82-4	STARTER PAWL
15	SCREW M4X16	56	WASHER	83	STARTER
16	FAN COVER	57	WASHER	83-1	GASKET
17	CLUTCH STEP SCREW	58	GASKET	83-2	STARTER HANDLE
18	WASHER	59	MUFFLER COMP	83-3	ROPE
19	CLUTCH SHOE COMP	60	BOLT	83-4	ROPE GUIDE
20	WASHER	61	WASHER	83-5	RECOIL STARTER BODY
21	CLUTCH SPRING	62	NUT M5	83-6	STARTER ROPE REEL
22	NUT M8X1	63	CYLINDER	83-7	RECOIL SPRING
23	WASHER	64	CYLINDER WASHER	83-8	SCREW
24	STOP CORD COMP	65	PISTON RING	83-9	START RATCHET
25	PRIMARY CORD GROMMET	66	PISTON	83-10	EASY START COIL-SPRING
26	MAGNETO STATOR	67	STOP RING	84	FLASH PAN
26A	MAGNETO ROTOR	68	PISTON PIN	85	LID
27	SCREW M5X25	69	NEEDLE BEARING	86	CHAIN
28	FRONT HALF CRANK CASE	70	PISTON PIN CIRCLET	87	FUEL TANK LID COMP
29	GUIDE PLATE	71	FUEL TANK LID	88	CLEANER OUTSIDE COVER
30	CRANK CASE GASKET	72	GASKET	89	CLEANER ELEMENT
31	OIL SEAL	73	AIRINLET MOUTH	90	DEFENDER FOR CLEANER ELEMENT
32	BALL BEARING 6001/P5	74	INSIDE COVER	91	SCREW ST4.2X12-F-H
33	KEY	75	OUTLET FUEL PIPE	92	CHOKE
34	CRANK SHAFT COMP	76	INLET FUEL PIPE	93	CLEANER INSIDE COVER
35	REAR HALF CRANK CASE	77	PRIMARY CORD GROMMET	94	CHOKE HANDLE
47	SCREW M5X14	78	CLEANER	95	SCREW M5X55
48	COVER	79	FUEL TANK		
49	ENGINE COVER	80	SCREW M5X16		

ST20121030-02

