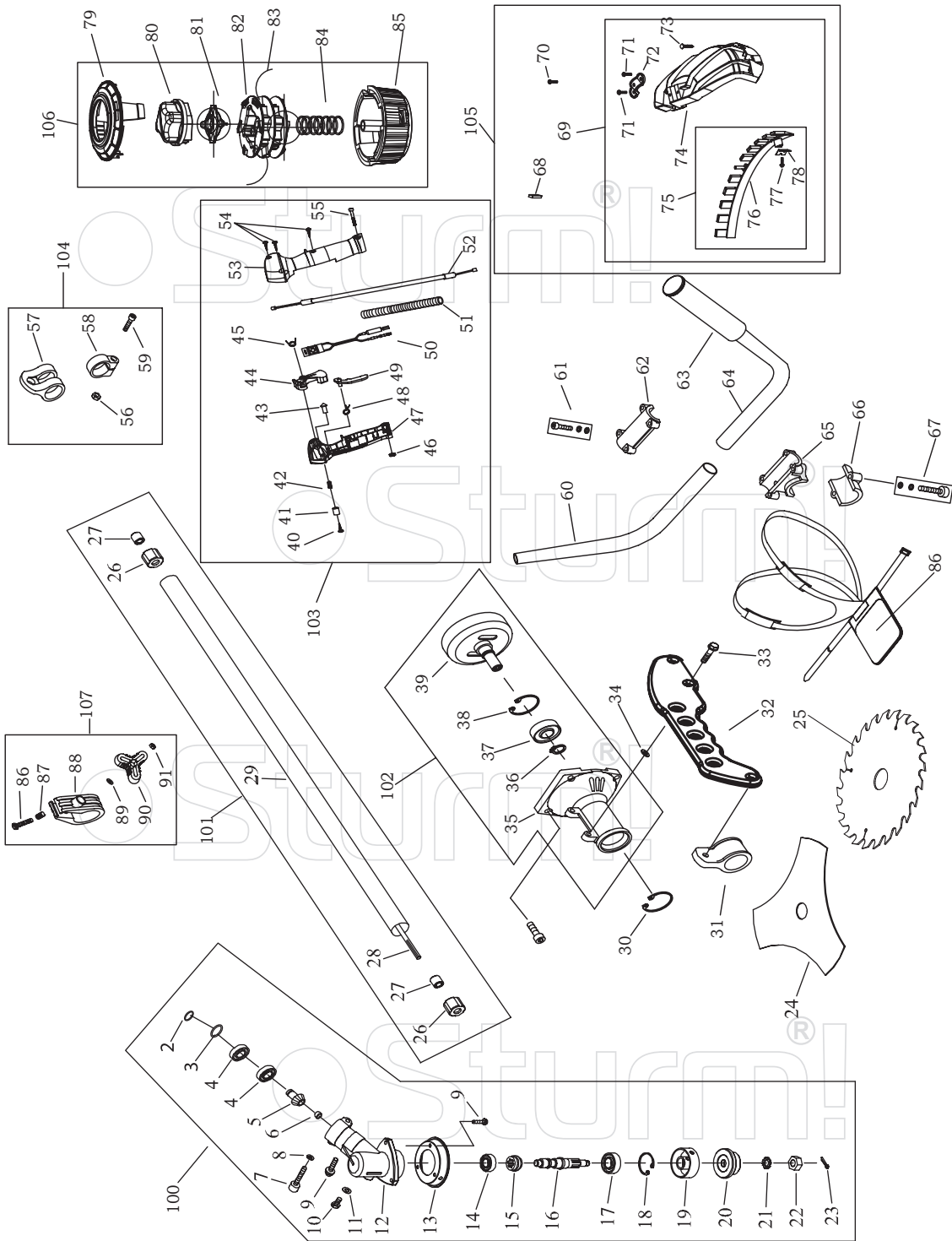


ENGINE FOR BT8933S

NO.	DESCRIPTION	NO.	DESCRIPTION	NO.	DESCRIPTION
9	SCREW M5X20	44	CYLINDER	76	SCREW M5X16
10	GASKET	45	SCREW	77	CLEANER COVER
11	NUT	46	GUIDE COVER ASS'Y	78	OUTLET FUEL PIPE
16	OIL-SEAL	47	SPARK PLUG	79	PLUG
17	CRANK CASE	48	SPRING	80	INLET FUEL PIPE
18	BEARING 6201/P5	49	PLUG COVER	81	FUEL TANK
19	CRANK SHAFT	50	PLUG CAP	82	LID ASS'Y
20	KEY	51	PLUG	82-1	FUEL TANK LID
21	PIN	52	UPPER COVER	82-2	GASKET
22	RUBBER WASHER	53	SCREW	82-3	INLET
23	CRANK CASE	54	GASKET	82-4	INSIDE COVER
24	FLASH PAN	55	MUFFLER	82-5	LID
25	SCREW M5X30	56	SCREW	82-6	CHAIN
26	MAGNETO ROTO COMP	57	BOLT	89	STAND
27	NUT	58	NUT	90	RUBBER COVER
28	IGNITION COLL COMP	59	MUFFLER COVER	91	SCREW M5X20
29	CORD COMP	60	GASKET	92	BRACKET
30	BOLT M5X20	61	ADMITTING PIPE	93	STARTER PULLEY ASS'Y
31	WASHER B	62	GASKET	93-1	STARTER REEL
32	SPRING	63	CARBURETOR	93-2	STOP RING
33	EXPANDER	69	STARTER	93-3	STARTER PAWL SPRING
34	WASHER	69-1	SCREW	93-4	STARTER PAWL
35	SCREW PIN	69-2	WASHER	94	CLEANER OUTSIDE COVER
36	FAN COVER	69-3	START ROPE REEL	95	CLEANER ELEMENT
37	BEARING	69-4	ROPE	96	DEFENDER FOR CLEANER ELEMENT
38	RING	69-5	RECOIL SPRING	97	SCREW ST4.2X12-F-H
39	PISTON	69-6	START COVER ASS'Y	98	CHOKE
40	PISTON PIN	69-7	START HANDLE	99	CLEANER INSIDE COVER
41	GASKET	69-8	RING	100	CHOKE HANDLE
42	PISTON RING	69-9	START RATCHET	101	SCREW M5X55
43	GASKET	69-10	EASY START COIL-SPRING		

UK-ST20161215

Sturm!



BT8933S

NO.	DESCRIPTION	NO.	DESCRIPTION	NO.	DESCRIPTION
2	STOP RING	35	CLUTCH CASE	68	BLADE COVER
3	STOP RING	36	CIRCLIP 15	69	GUARD ASSEMBLY
4	BEARING 6000-2RS/P5	37	BEARING 6202-2RZ	70	SCREW
5	PINION	38	CIRCLIP 35	71	SCREW
6	STEEL PLATE CAP	39	CLUTCH DRUM COMP.	72	SAFETY GUARD BRACKET
7	SCREW M6X20	40	SCREW	73	SCREW
8	WASHER	41	BUTTON	74	SAFETY GUARD
9	SCREW M5X12	42	SPRING	75	LOW GUARD ASSEMBLY
10	BOLT M6X12	43	LOCKING PIN	76	LOW GUARD
11	WASHER	44	TRIGGER	77	SCREW
12	GEAR CASE	45	SPRING	78	BLADE
13	BLADE COVER	46	NUT	79	ROPE ROOM CAP
14	BEARING 6000/P5	47	LEFT HANDLE	80	BOUNCE OBJECT
15	GEAR	48	SPRING	81	ROPE CAP
16	GEAR SHAFT	49	HAND GRIP	82	ROPE SEAT
17	BEARING 6002-2RS/P5	50	STOP BUTTOM COMP.	83	NYLON CORD
18	STOP RING	51	TUBE	84	SPRING
19	HOLDER	52	CABLE COMP.	85	ROPE ROOM
20	HOLDER	53	RIGHT HANDLE	86	BOLT
21	WASHER	54	SCREW	87	SPRING
22	LEFT NUT	55	SCREW	88	RING FOR LIMIT
23	PIN	56	NUT	89	WASHER
24	3T BLADE	57	HARNESS CLAMP	90	HANDLE GRIP
25	PIPE COMP	58	CLAMP	91	NUT
26	RUBBER COVER	59	SCREW	100	GEAR BOX ASSEMBLY
27	OIL-BEARING	60	LEFT HANDLE	101	PIPE ASSEMBLY
28	DRIVE SHAFT	61	BOLT	102	CLUCH ASSEMBLY
29	PIPE	62	UPPER CAP	103	LEVER ASSEMBLY
30	CIRCLIP	63	LEFT GRIP	104	HOLDER ASSEMBLY
31	HANG RING	64	RIGHT HANDLE	105	GUARD ASSEMBLY
32	HANG HANDLE	65	BRACKET	106	NYLON CUTTER HEAD
33	BOLT	66	LOWER CAP	107	RING FOR LIMIT ASSEMBLY
34	NUT	67	SCREW		

UK-ST20161215

