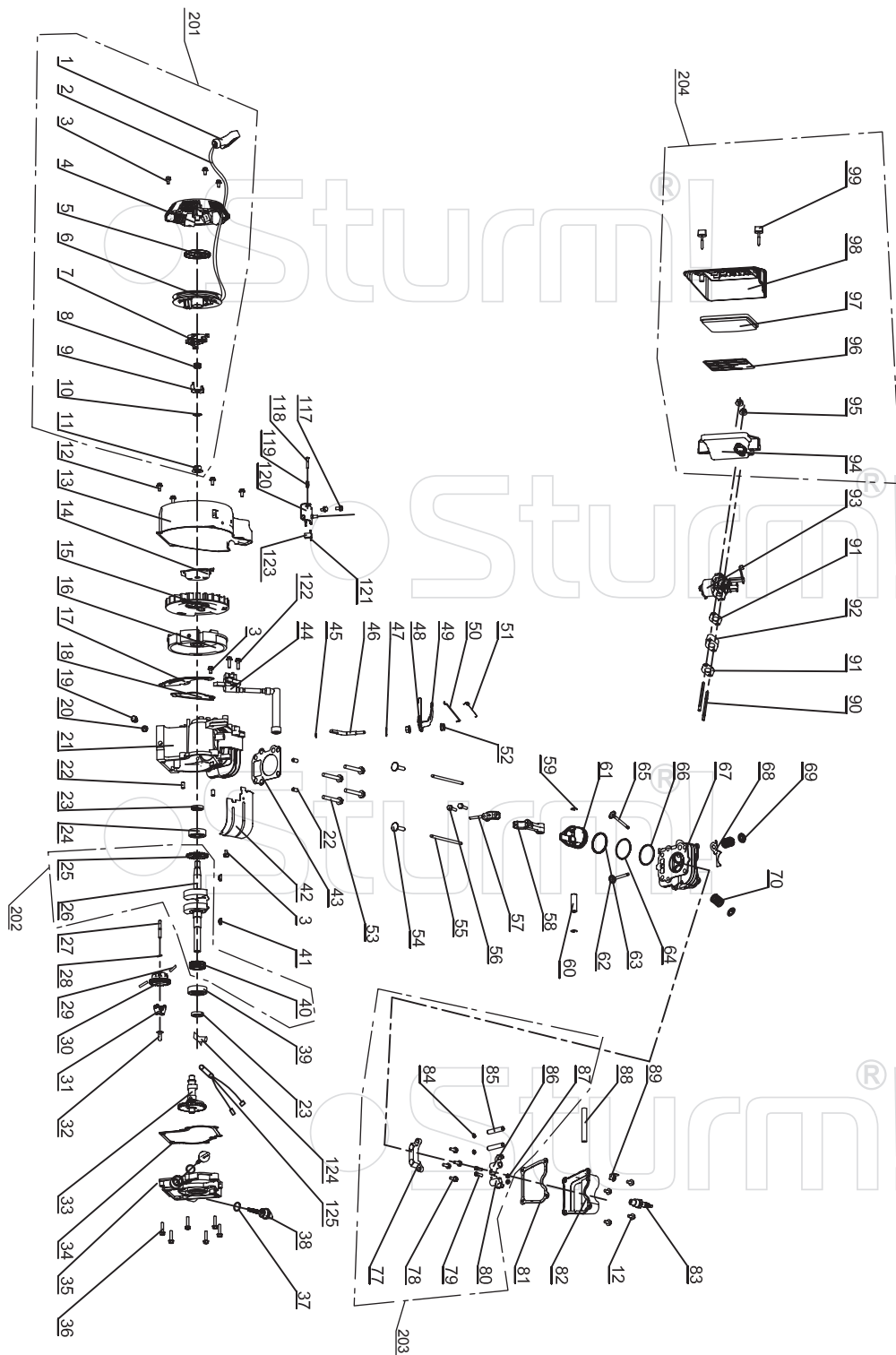


## PG8712

NO.	DESCRIPTION	NO.	DESCRIPTION
1	BOLT M6X22	31	BOLT M6X20
2	SPRING WASHER	32	VIBRATION ABSORBER WASHER
3	FLAT WASHER	33	CLIP
4	NUT M6	34	FUEL HOSE
5	CONTROL PANEL	35	FUEL TANK
6	ENGINE SAW	36	FRAME
7	BOLT M6X12	37	ALTERNATOR FRONT FRAME
8	DC SOCKET	38	BOLT M8X20
9	DC CIRCUIT BREAKER	39	ROTOR ASSEMBLY
10	AC CIRCUIT BREAKER	39+	BEARING 6202
11	AC SOCKET	40	STATOR COVER
13	CONDENSER	41	STATOR ASSEMBLY
14	CONTROL PANEL COVER	42	ALTERNATOR CENTER SCREW
16	VIBRATION ABSORBER	43	MUFFLER SUPPORT
17	NUT M8	44	SCREW M6X90
18	BOLT M8X12	45	SCREW M5X12
19	VIBRATION ABSORBER	46	SPRING WASHER
20	VIBRATION ABSORBER	47	FLAT WASHER
21	VIBRATION ABSORBER	48	ALTERNATOR REAR COVER
22	ENGINE	49	BOLT M5X20
23	EXHAUST BOLT	50	DIODE ASSY
24	EXHAUST GASKET	51	REAR FRAME
25	MUFFLER ASSEMBLY	101	DIGITAL PANEL METER
26	NUT M8	102	BOLT M6X22
27	FUEL COCK	103	NUT M6
28	FUEL METER	104	PLASTIC SLEEVE
29	FUEL FILTER	105	RIPPLE PIPE
30	FUEL TANK CAP	106	PLASTIC SLEEVE

ST20130305-02



## ENGINE FOR PG8712

No.	DESCRIPTION	No.	DESCRIPTION	No.	DESCRIPTION
1	ROPE HANDLE	43	CYLINDER GASKET	91	CARBURETOR GASKET
2	ROPE	44	T.C.I	92	CARBURETOR CONNECTOR
3	SCREW M6X10	45	CIRCLIP	93	CARBURETOR
4	STARTER CASE	46	GOVERNING SHAFT	94	AIR CLEANER BASE
5	SPIRAL SPRING	47	CLIP	95	NUT M6
6	DRUM SHEAVE	48	GOVERNING SPRING	96	ELEMENT SEAT
7	DRIVING PAWL	49	GOVERNING LEVER	97	AIR CLEANER ELEMENT
8	SPRING	50	CARBURETOR CONNECTING ROD	98	AIR LEANER COVER
9	DRIVING PAWL	51	CARBURETOR SPRING	99	AOVER SCREW
10	LOCK WASHAR	52	NUT M6	117	BOLT M6X8
11	FLYWHEEL NUT	53	SCREW M8X55	118	SCREW M5X30
12	BOLT M6X12	54	VALVE LIFTER	119	SPRING
13	FAN CASE	55	PUSH ROD	120	GOVERNING RACK
14	STARTER BUSH	56	CONNECTING ROD SCREW M6X28	121	ENGINE SAW
15	FAN	57	CONNECTING ROD CAP	122	BOLT M6X20
16	FLYWHEEL	58	CONNECTING ROD BOBY	123	ENGINE SAW
17	AIR SHROUD	59	PISTON PIN CIRCLIP	124	OIL LEVEL SENSOR
18	AIR SHROUD	60	PISTON PIN	125	IGNITION WIRE
19	DRAIN PLUG	61	POSTON	201	STARTER ASSEMBLY(1+2+3+...11)
20	DRAIN PLUG SEAL	62	INTAKE VALVE	202	CRANK SHAFT ASSEMBLY(25+26+40)
21	CRANKCASE	63	THIRD PISTON RING	203	VALVE ROCKER ARM ASSEMBLY(77+78.+80+84+...87)
22	DOWEL PIN	64	SECOND PISTON RING	204	AIR CLEANER ASSEMBLY(94+95+...99)
23	OIL SEAL	65	EXHAUST VALVE		
24	BALL BEARING 6203	66	FRIST PISTON RING		
25	GOVERNING DRIVING GEAR	67	CYLINDER HEAD ASSEMBLY		
26	CRANKSHAFT	68	OIL CHANNEL COVER		
27	GOVERNING GEAR SHAFT	69	VALVE RETAINER		
28	WASHER	70	VALVE SPRING		
29	FLYWEIGHT PIN	77	ROCKER ARM SEAT		
30	GOVERNING GEAR	78	SCREW M6X15		
31	FLYWEIGHT	79	VALVE CLEARANCE ADJUSTING SC.		
32	COLLAR	80	ROCKER ARM (B)		
33	CAMSHAFT ASSEMBLY	81	HEAD COVER GASKET		
34	CRANKCASE GASKET	82	CYLINDER HEAD COVER ASSEMBLY		
35	CRANKCASE COVER	83	SPARK PLUG		
36	SCREW M6X25	84	CIRCLIP		
37	OIL GAUGE SEAL	85	ROCKER ARM SHAFT		
38	OIL GAUGE	86	ROCKER ARM(A)		
39	BALL BEARING 6303	87	VALVE CLEARANCE ADJUSTING NU.		
40	TIMING GEAR	88	TUBE		
41	KEY 5.0 6.5 16	89	BAFFLE		
42	AIR SHROUD	90	INTAKE BOLT		