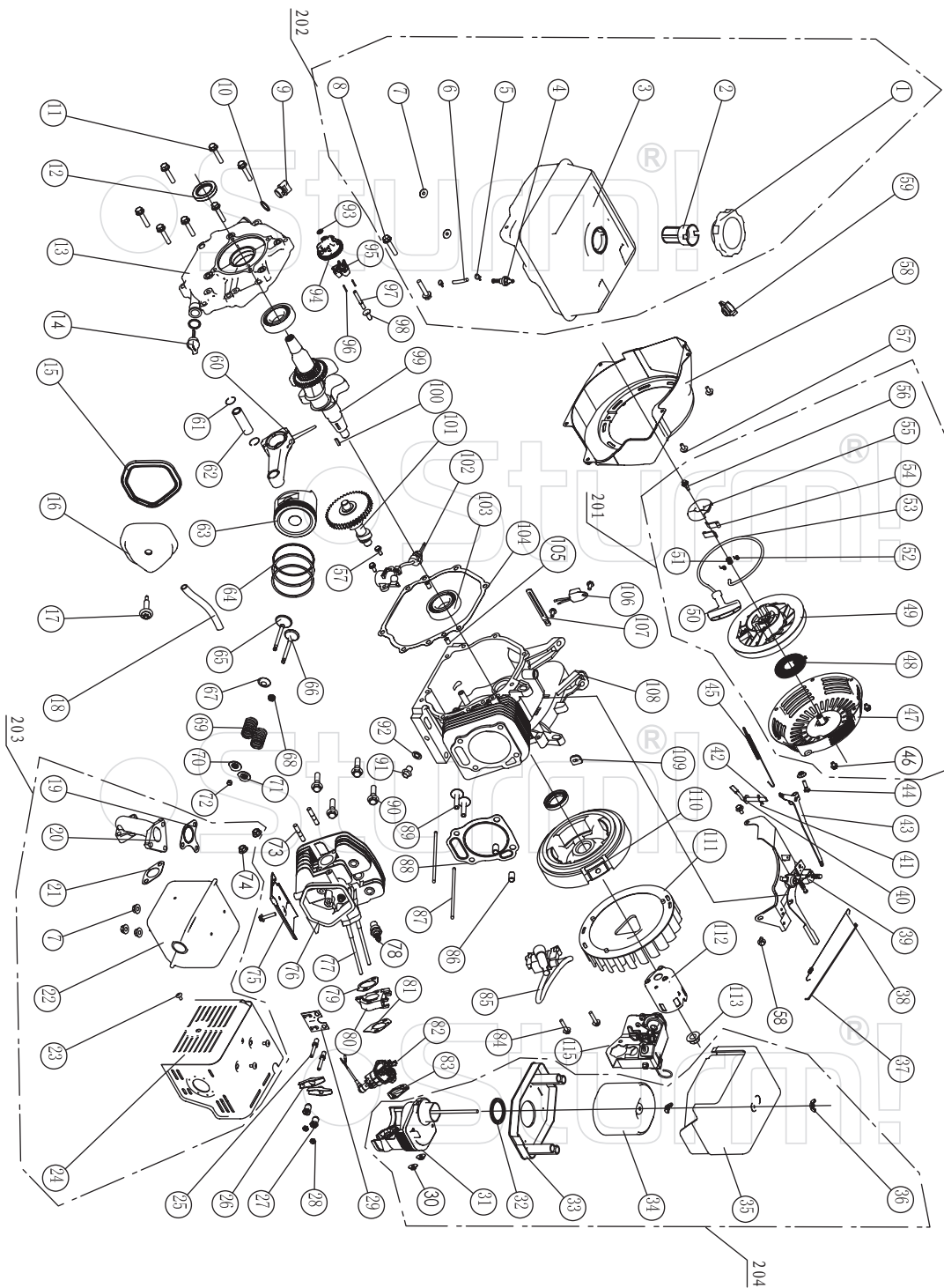


## PG8736

NO.	DESCRIPTION	NO.	DESCRIPTION
1	BOLT M6X12	56	NUT M6
2	SWITCH	57	AIR CLEANER STAY
3	CONTROL PANEL	58	AIR CLEANER CASE COMP
4	DIODE ASSY	59	AIR CLEANER SEAL
6	AC CIRCUIT BREAKER	60	NUT M5
7	RECEPTACLE (AC)	61	SEPARATOR
8	CASE	62	ELEMENT
9	BOLT M5X10	63	AIR CLEANER COVER COMP
10	GENERATOR END COVER	64	CONTROL ASSY
11	BOLT M6X10	65	BOLT
12	TERMINAL	66	MUFFLER GASKET
13	DIODE ASSY	67	EX PIPE
14	AVR	68	BOLT M8X25
15	BRUSH ASSY	69	MUFFLER
16	END COVER	70	MUFFLER INNER PROTECTOR
17	FLANGE BOLT M6X179	71	MUFFLER LIFE PROTECTOR
18	STATOR COVER	72	MUFFLER OUTER PROTECTOR
19	FLANGE BOLT M10X1.25X225	73	BOLT M8X20
20	STATOR ASSY	74	MUFFLER STAY
21	ROTOR COMP	101	DIGITAL PANEL METER
22	COVER	102	RECEPTACLE (DC)
23	CRANKCASE COVER	103	DC CIRCUIT BREAKER
24	O-RING	104	PLASTIC SLEEVE
25	OIL FILLER CAP	105	RIPPLE PIPE
26	ENGINE	106	PLASTIC SLEEVE
27	FRAME RUBBET	107	PLASTIC SLEEVE
28	NUT M8	201	AIR CLEANER ASSEMBLY(58+...63)
29	BOTTOM RUBBER 1		
30	FRAME		
31	BOTTOM RUBBER 2		
32	CLIP		
33	FUEL TUBE		
34	FUEL COCK		
35	FUEL TANK		
36	FUEL FILTER		
37	FUEL TANK CAP		
38	SCREW M5X6		
39	FUEL METER ASSY		
40	BOLT M6X25		
41	WASHER Ø6		
42	RUBBER		



## ENGINE FOR PG8736 BP8710

No.	DESCRIPTION	No.	DESCRIPTION	No.	DESCRIPTION
1	FUEL FILLER CAP COMP	42	COVER ARM SHAFT	82	CARBURETOR ASSY
2	OIL FILTER	43	GOVERNOR ARM	83	AIR CLEANER PACKING
3	FUEL TANK COMP	44	GOVERNOR ARM BOLT	84	BOLT M6X29
4	FUEL TANK JOINT	45	GOVERNOR SPRING	85	IGNITION
5	CLIP	46	FLANGE BOLT M6X8	86	DOWEL PIN
6	TUBE	47	RECOIL STARTER CASE COMP	87	PUSH ROD
7	NUT M8	48	STARTER RETURN SPRING	88	CYLINDER HEAD CASSET
8	FLANGE BOLT M8X25	49	RECOIL STARTER PULLEY	89	VALVE LIFTER
9	OIL FILLER CAP	50	RECOIL STARTER KNOB	90	BOLT
10	OIL FILLER CAP PACKING	51	RATCHET GUIDE SPRING	91	DRAIN PLUG BOLT
11	FLANGE BOLT M8X40	52	RATCHET SPRING	92	DRAIN PLUG WASHER
12	OIL SEAL	53	RECOIL STARTER ROPE	93	WASHER
13	CRANKCASE COVER	54	RATCHET STARTER	94	GOVERNOR WEIGHT HOLDER
14	AIR CLEANER PACKING	55	RATCHET GUIDE	95	GOVERNOR WEIGHT
15	HEAD OVER PACKING	56	RATCHET GUIDE BOLT	96	GOVERNOR WEIGHT PIN
16	HEAD COVER COMP	57	FLANGE BOLT M6X12	97	GOVERNOR SHAFT
17	HEAD COVER BOLT COMP	58	FAN CORER COMP	98	GOVERNOR SLIDER
18	TUBE	60	CONNECTING ROD ASSEMBLY	99	CRANKSHAFT COMP
19	EX PIPE GASKET	61	PISTON PIN CLIP	100	KEY
20	EX PIPE	62	PISTON PIN	101	CAMSHAFT COMP
21	MUFFLER GASKET	63	PISTON	102	OIL LEVEL SWITCH ASSY
22	MUFFLER COMP	64	OIL SEAL SET COMP	103	RADIAL BALL BEARING 6206
23	TAPPING SCREEN M5X10		SECOND RING SET	104	CASE COVER PACKING
24	MUFFLER PROTECTOR COMP		FIRST RING SET	105	DOWEL PIN 8X14
25	PIVOT BOLT	65	EX, VALVE	106	DIODE COMP
26	VALVE ROCKET ARM	66	IN, VALVE	107	WIRE CLIP
27	ROCKER ARM PIVOT	67	VALVE SPRING WASHER	108	CRANKCASE ASSY
28	PIVOT ADJUSTING NUT	68	VALVE OIL	109	PACKING
29	PUSH ROD GUIDE PLATE	69	VALVE SPRING	110	FLYWHEEL COMP
30	NUT M6	70	EX, VALVE SPRING RETAINER	111	COOLING FAN
31	AIR CLEAN ELBOW COMP	71	IN, VALVE SPRING RETAINER	112	STARTER PULLEY COMP
32	ELBOW PACKING	72	VALVE ROTATOR	113	SPECIAL NUT
33	SILENCER NOSE	73	BOLT	115	ENRICHMENT SET ASSY
34	AIR CLEAN ELEMENT	74	NUT M8	201	STARTER ASSEMBLY(46+...56)
35	AIR CLEAN COVER	75	SHROUD		BELOW ONLY FOR BP8710
36	AIR CLEAN COVER NUT	76	HEAD COMP	59	SWITCH
37	GOVERNOR ROD	77	BOLT	202	FUEL TANK ASSEMBLY(1+2+...8)
38	THROTTLE RETURN SPRING	78	SPARK PLUG	203	MUFFLER ASSEMBLY(19+20+...24)
39	CONTROL ASSY	79	CARBURETOR INSULATOR PACKING	204	AIR CLEANER ASSEMBLY(30+...36)
40	WASHER 8.2X17X0.8	80	CARBURETOR INSULATOR		
41	PIN CLIP	81	CARBURETOR PACKING		