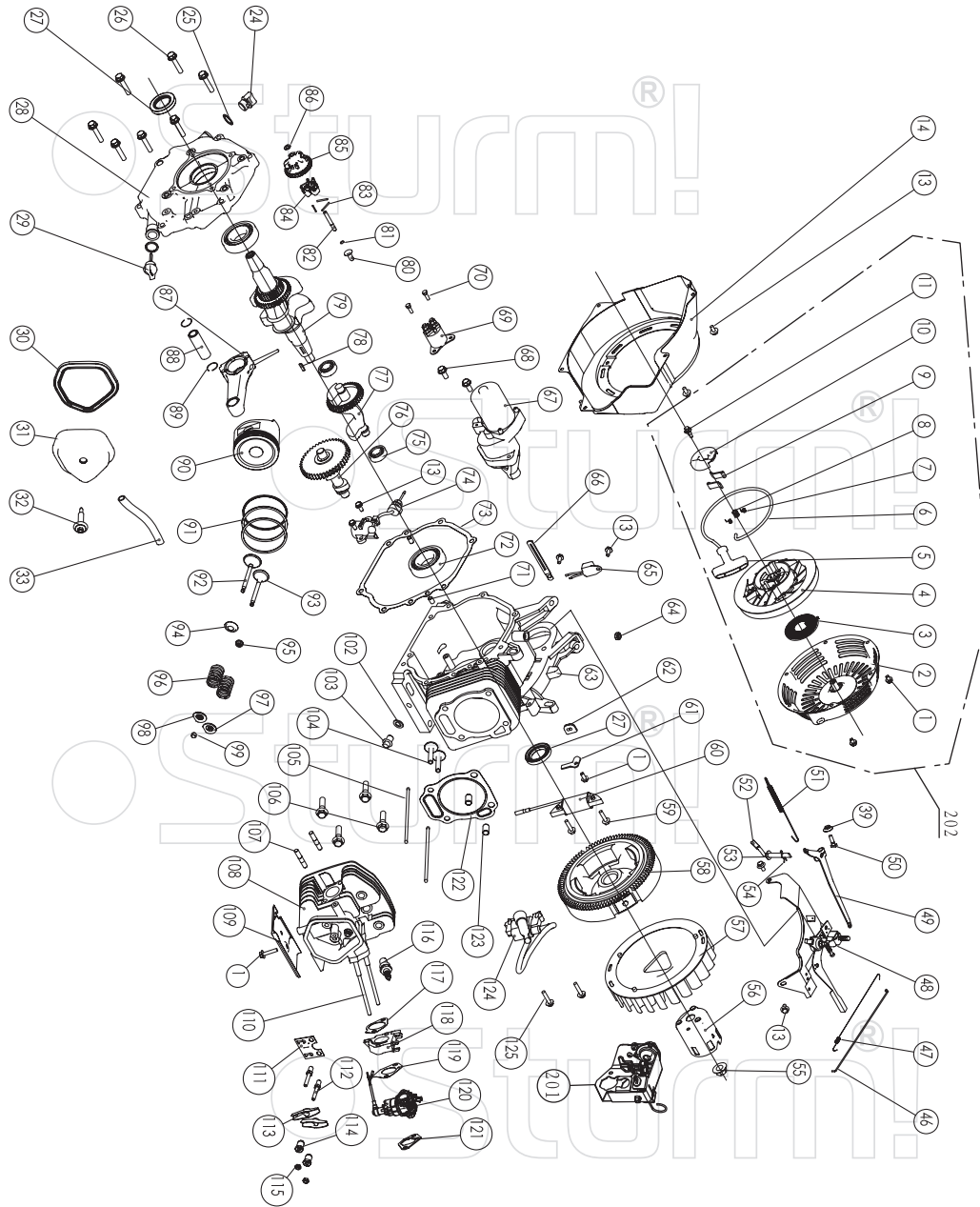


# PG8745E

NO.	DESCRIPTION	NO.	DESCRIPTION
1	BOLT M6X12	56	NUT M6
2	SWITCH	57	AIR CLEANER STAY
3	CONTROL PANEL	58	AIR CLEANER CASE COMP
4	DIODE ASSY	59	AIR CLEANER SEAL
6	AC CIRCUIT BREAKER	60	NUT M5
7	RECEPTACLE (AC)	61	SEPARATOR
8	CASE	62	ELEMENT
9	BOLT M5X10	63	AIR CLEANER COVER COMP
10	GENERATOR END COVER	64	CONTROL ASSY
11	BOLT M6X10	65	BOLT
12	TERMINAL	66	MUFFLER GASKET
13	DIODE ASSY	67	EX PIPE
14	AVR	68	BOLT M8X25
15	BRUSH ASSY	69	MUFFLER
16	END COVER	70	MUFFLER INNER PROTECTOR
17	FLANGE BOLT M6X164	71	MUFFLER LIFE PROTECTOR
18	STATOR COVER	72	MUFFLER OUTER PROTECTOR
19	FLANGE BOLT M10X1.25X250	73	BOLT M8X20
20	STATOR ASSY	74	MUFFLER STAY
21	ROTOR COMP	75	NET M6
22	COVER	76	BATTERY SETTING PLATE
23	CRANKCASE COVER	77	BATTERY
24	O-RING	78	BOLT M6
25	OIL FILLER CAP	79	BATTERY GUARD
26	ENGINE	80	BOLT M8X50
27	FRAME RUBBET	101	DIGITAL PANEL METER
28	NUT M8	102	RECEPTACLE (DC)
29	BOTTOM RUBBER 1	103	DC CIRCUIT BREAKER
30	FRAME	104	PLASTIC SLEEVE
31	BOTTOM RUBBER 2	105	RIPPLE PIPE
32	CLIP	106	PLASTIC SLEEVE
33	FUEL TUBE	107	PLASTIC SLEEVE
34	FUEL COCK	108	CHARGER
35	FUEL TANK	109	2A BREAKER
36	FUEL FILTER	110	RECEPTACLE(ATS)
37	FUEL TANK CAP	201	AIR CLEANER ASSEMBLY(58+...63)
38	SCREW M5X6		
39	FUEL METER ASSY		
40	BOLT M6X25		
41	WASHER Ø6		
42	RUBBER		



## ENGINE FOR PG8745E

No.	DESCRIPTION	No.	DESCRIPTION	No.	DESCRIPTION
1	FLANGE BOLT M6X8	66	WIRE CLIP	108	HEAD COMP
2	RECOIL STARTER CASE COMP	67	START MOTOR	109	SHROUD
3	STARTER RETURN SPRING	68	FLANGE BOLT M8X35	110	BOLT
4	RECOIL STARTER PULLEY	69	RELAY	111	PUSH ROD GUIDE PLATE
5	RECOIL STARTER KNOB	70	FLANGE BOLT M5X20	112	PIVOT BOLT
6	RECOIL STARTER ROPE	71	FLEXIBILITY GASKET	113	VALVE ROCKET ARM
7	RATCHET SPRING	72	DOWEL PIN 8X14	114	ROCKER ARM PIVOT
8	RATCHET GUIDE SPRING	73	RADIAL BALL BEARING 6207/C3	115	PIVOT ADJUSTING NUT
9	RATCHET STARTER	74	CASE COVER PACKING	116	SPARK PLUG
10	RATCHET GUIDE	75	OIL LEVEL SWITCH ASSY	117	CARBURETOR INSULATOR PACKING
11	RATCHET GUIDE BOLT	76	RADIAL BALL BEARING 6202/P6	118	CARBURETOR INSULATOR
13	FLANGE BOLT M6X12	77	CAMSHAFT COMP	119	CARBURETOR PACKING
14	FAN CORER COMP	78	BALANCE GEAR	120	CARBURETOR ASSY
24	OIL FILLER CAP	79	KEY	121	AIR CLEANER PACKING
25	OIL FILLER CAP PACKING	80	CRANKSHAFT COMP	122	CYLINDER HEAD CASSET
26	FLANGE BOLT M8X40	81	GOVERNOR SLIDER	123	DOWEL PIN
27	OIL SEAL	82	GOVERNOR SHAFT CLIP	124	IGNITION
28	CRANKCASE COVER	83	GOVERNOR SHAFT	125	BOLT M6X29
29	AIR CLEANER PACKING	84	GOVERNOR WEIGHT PIN	201	ENRICHMENT SET ASSY
30	HEAD OVER PACKING	85	GOVERNOR WEIGHT	202	STARTER ASSEMBLY(1+2...11)
31	HEAD COVER COMP	86	GOVERNOR WEIGHT HOLDER		
32	HEAD COVER BOLT COMP	87	WASHER		
33	TUBE	88	CONNECTING ROD ASSEMBLY		
46	GOVERNOR ROD	89	PISTON PIN		
47	THROTTLE RETURN SPRING	90	PISTON PIN CLIP		
48	CONTROL ASSY	91	PISTON		
49	GOVERNOR ARM	92	OIL SEAL SET COMP		
50	GOVERNOR ARM BOLT	93	SECOND RING SET		
51	GOVERNOR SPRING	94	FIRST RING SET		
52	COVER ARM SHAFT	95	EX, VALVE		
53	WASHER 8.2X17X0.8	96	IN, VALVE		
54	PIN CLIP	97	VALVE SPRING WASHER		
55	SPECIAL NUT	98	VALVE OIL		
56	STARTER PULLEY COMP	99	VALVE SPRING		
57	COOLING FAN	100	IN, VALVE SPRING RETAINER		
58	FLYWHEEL COMP	101	EX, VALVE SPRING RETAINER		
59	FLANGE BOLT M6X29	102	VALVE ROTATOR		
60	ELECTRIFY COIL	103	DRAIN PLUG WASHER		
61	WIRE FLAT	104	DRAIN PLUG BOLT		
62	PACKING	105	VALVE LIFTER		
63	CRANKCASE ASSY	106	PUSH ROD		
64	OIL SEAL	107	BOLT		
65	DIODE COMP				