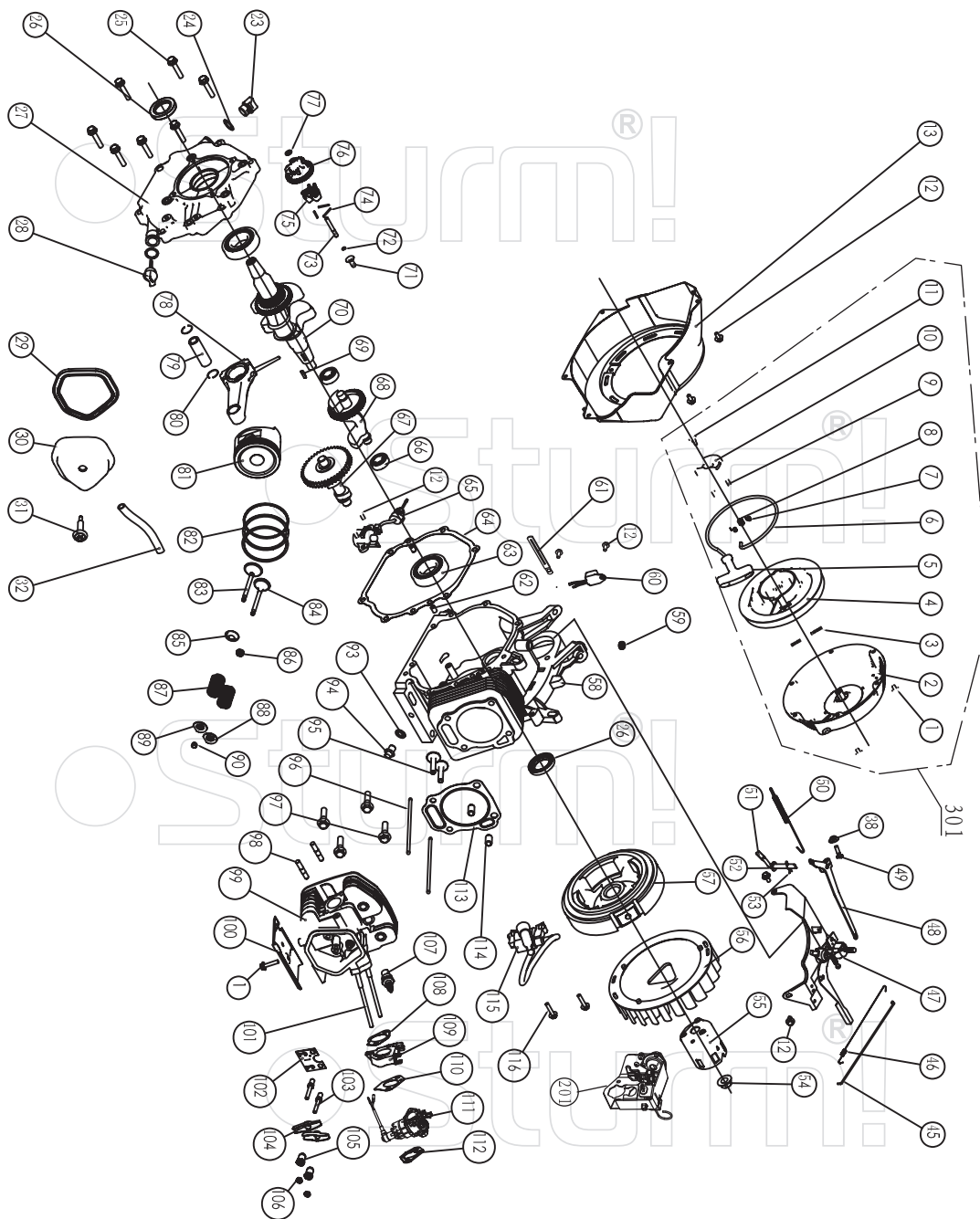


PG8755

NO.	DESCRIPTION	NO.	DESCRIPTION
1	BOLT M6X12	56	NUT M6
2	SWITCH	57	AIR CLEANER STAY
3	CONTROL PANEL	58	AIR CLEANER CASE COMP
4	DIODE ASSY	59	AIR CLEANER SEAL
6	AC CIRCUIT BREAKER	60	NUT M5
7	RECEPTACLE (AC)	61	SEPARATOR
8	CASE	62	ELEMENT
9	BOLT M5X10	63	AIR CLEANER COVER COMP
10	GENERATOR END COVER	64	CONTROL ASSY
11	BOLT M6X10	65	BOLT
12	TERMINAL	66	MUFFLER GASKET
13	DIODE ASSY	67	EX PIPE
14	AVR	68	BOLT M8X25
15	BRUSH ASSY	69	MUFFLER
16	END COVER	70	MUFFLER INNER PROTECTOR
17	FLANGE BOLT M6X179	71	MUFFLER LIFE PROTECTOR
18	STATOR COVER	72	MUFFLER OUTER PROTECTOR
19	FLANGE BOLT M10X1.25X265	73	BOLT M8X20
20	STATOR ASSY	74	MUFFLER STAY
21	ROTOR COMP	101	INDUSTRY RECEPTACLE
22	COVER	104	D.C 10A BREAKER
23	CRANKCASE COVER	105	EARTH BOLT
24	O-RING	201	DIGITAL PANEL METER
25	OIL FILLER CAP	202	RECEPTACLE (DC)
26	ENGINE	203	PLASTIC SLEEVE
27	FRAME RUBBET	204	RIPPLE PIPE
28	NUT M8	205	PLASTIC SLEEVE
29	BOTTOM RUBBER 1	206	PLASTIC SLEEVE
30	FRAME	301	AIR CLEANER ASSEMBLY(58+...63)
31	BOTTOM RUBBER 2		
32	CLIP		
33	FUEL TUBE		
34	FUEL COCK		
35	FUEL TANK		
36	FUEL FILTER		
37	FUEL TANK CAP		
38	SCREW M5X6		
39	FUEL METER ASSY		
40	BOLT M6X25		
41	WASHER Ø6		
42	RUBBER		



ENGINE FOR PG8745 PG8755 PG87603

No.	DESCRIPTION	No.	DESCRIPTION	No.	DESCRIPTION
1	FLANGE BOLTM6X8	62	DOWEL PIN8X14	100	SHROUD
2	RECOIL STARTER CASE COMP	63	RADIAL BALL BEARING 6207/C3	101	BOLT
3	STARTER RETURN SPRING	64	CASE COVER PACKING	102	PUSH ROD GUIDE PLATE
4	RECOIL STARTER PULLEY	65	OIL LEVEL SWITCH ASSY	103	PIVOT BOLT
5	RECOIL STARTER KNOB	66	RADIAL BALL BEARING6202/P6	104	VALVE ROCKET ARM
6	RECOIL STARTER ROPE	67	CAMSHAFT COMP	105	ROCKER ARM PIVOT
7	RATCHET SPRING	68	BALANCE GEAR	106	PIVOT ADJUSTING NUT
8	RATCHET GUIDE SPRING	69	KEY	107	SPARK PLUG
9	RATCHET STARTER	70	CRANKSHAFT COMP	108	CARBURETOR INSULATOR PACKING
10	RATCHET GUIDE	71	GOVERNOR SLIDER	109	CARBURETOR INSULATOR
11	RATCHET GUIDE BOLT	72	GOVERNOR SHAFT CLIP	110	CARBURETOR PACKING
12	FLANGE BOLTM6X12	73	GOVERNOR SHAFT	111	CARBURETOR ASSY
13	FAN CORER COMP	74	GOVERNOR WEIGHT PIN	112	AIR CLEANER PACKING
23	OIL FILLER CAP	75	GOVERNOR WEIGHT	113	CYLINDER HEAD CASKET
24	OIL FILLER CAP PACKING	76	GOVERNOR WEIGHT HOLDER	114	DOWEL PIN
25	FLANGE BOLTM8X40	77	WASHER	115	IGNITION
26	OIL SEAL	78	CONNECTING ROD ASSEMBLY	116	BOLT M6X29
27	CRANKCASE COVER	79	PISTON PIN	201	ENRICHMENT SET ASSY
28	AIR CLEANER PACKING	80	PISTON PIN CLIP	301	STARTER ASSEMBLY(1+2...11)
29	HEAD OVER PACKING	81	PISTON		
30	HEAD COVER COMP	82	OIL SEAL SET COMP		
31	HEAD COVER BOLT COMP		SECOND RING SET		
32	TUBE		FIRST RING SET		
45	GOVERNOR ROD	83	EX. VALVE		
46	THROTTLE RETURN SPRING	84	IN. VALVE		
47	CONTROL ASSY	85	VALVE SPRING WASHER		
48	GOVERNOR ARM	86	VALVE OIL		
49	GOVERNOR ARM BOLT	87	VALVE SPRING		
50	GOVERNOR SPRING	88	IN , VALVE SPRING RETAINER		
51	COVER ARM SHAFT	89	EX , VALVE SPRING RETAINER		
52	WASHER8.2X17X0.8	90	VALVE ROTATOR		
53	PIN CLIP				
54	SPECIAL NUT				
55	STARTER PULLEY COMP	93	DRAIN PLUG WASHER		
56	COOLING FAN	94	DRAIN PLUG BOLT		
57	FLYWHEEL COMP	95	VALVE LIFTER		
58	CRANKCASE ASSY	96	PUSH ROD		
59	OIL SEAL	97	BOLT		
60	DIODE COMP	98	BOLT		
61	WIRE CLIP	99	HEAD COMP		