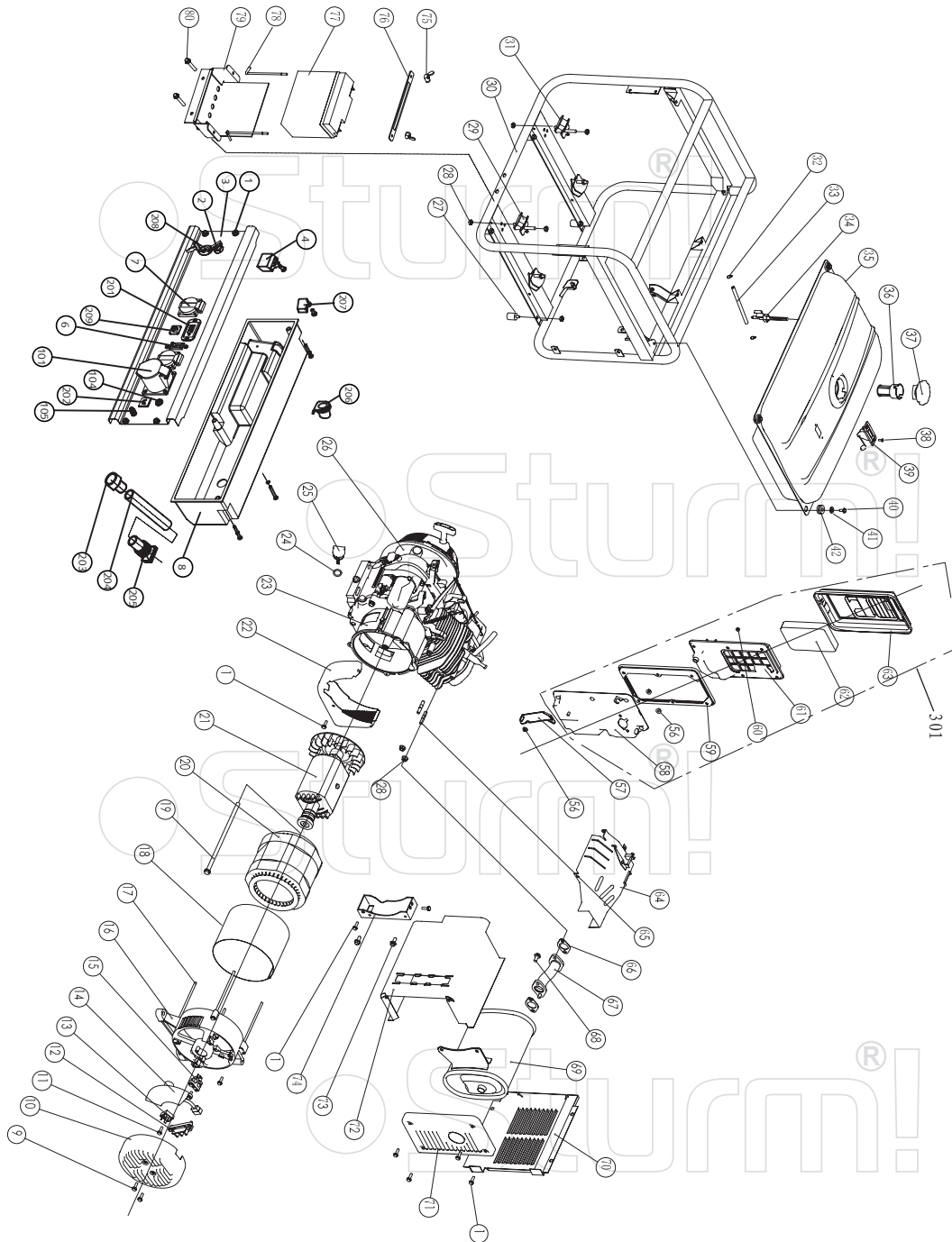
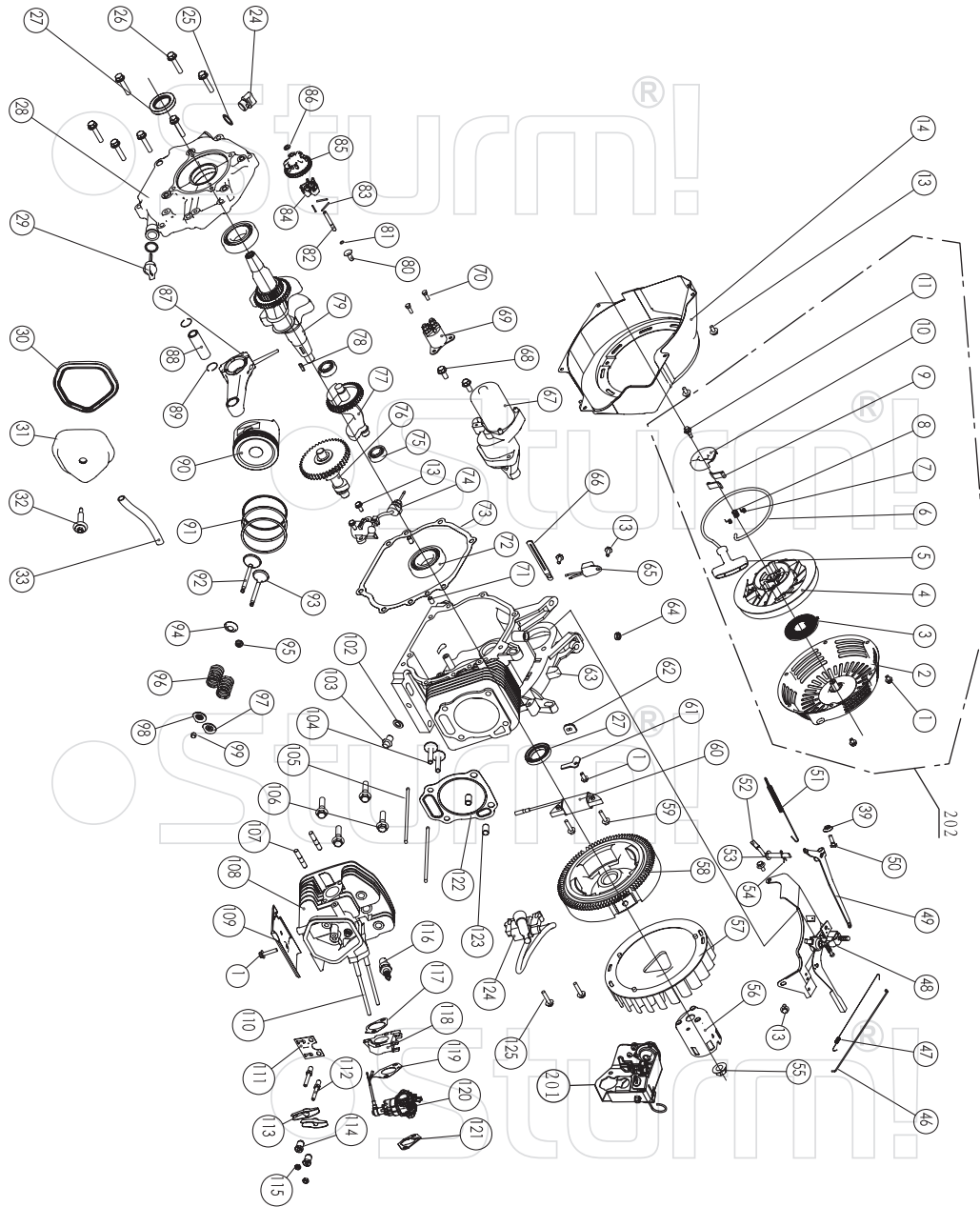


# PG8755E



NO.	DESCRIPTION	NO.	DESCRIPTION
1	BOLT M6X12	56	NUT M6
2	SWITCH	57	AIR CLEANER STAY
3	CONTROL PANEL	58	AIR CLEANER CASE COMP
4	DIODE ASSY	59	AIR CLEANER SEAL
6	AC CIRCUIT BREAKER	60	NUT M5
7	RECEPTACLE (AC)	61	SEPARATOR
8	CASE	62	ELEMENT
9	BOLT M5X10	63	AIR CLEANER COVER COMP
10	GENERATOR END COVER	64	CONTROL ASSY
11	BOLT M6X10	65	BOLT
12	TERMINAL	66	MUFFLER GASKET
13	DIODE ASSY	67	EX PIPE
14	AVR	68	BOLT M8X25
15	BRUSH ASSY	69	MUFFLER
16	END COVER	70	MUFFLER INNER PROTECTOR
17	FLANGE BOLT M6X179	71	MUFFLER LIFE PROTECTOR
18	STATOR COVER	72	MUFFLER OUTER PROTECTOR
19	FLANGE BOLT M10X1.25X265	73	BOLT M8X20
20	STATOR ASSY	74	MUFFLER STAY
21	ROTOR COMP	75	NET M6
22	COVER	76	BATTERY SETTING PLATE
23	CRANKCASE COVER	77	BATTERY
24	O-RING	78	BOLT M6
25	OIL FILLER CAP	79	BATTERY GUARD
26	ENGINE	80	BOLT M8X50
27	FRAME RUBBET	101	INDUSTRY RECEPTACLE
28	NUT M8	104	D.C 10A BREAKER
29	BOTTOM RUBBER 1	105	EARTH BOLT
30	FRAME	201	DIGITAL PANEL METER
31	BOTTOM RUBBER 2	202	RECEPTACLE (DC)
32	CLIP	203	PLASTIC SLEEVE
33	FUEL TUBE	204	RIPPLE PIPE
34	FUEL COCK	205	PLASTIC SLEEVE
35	FUEL TANK	206	PLASTIC SLEEVE
36	FUEL FILTER	207	CHARGER
37	FUEL TANK CAP	208	2A BREAKER
38	SCREW M5X6	209	RECEPTACLE(ATS)
39	FUEL METER ASSY	301	AIR CLEANER ASSEMBLY(58+...63)
40	BOLT M6X25		
41	WASHER Ø6		
42	RUBBER		



## ENGINE FOR PG8755E PG8763E

No.	DESCRIPTION	No.	DESCRIPTION	No.	DESCRIPTION
1	FLANGE BOLTM6X8	66	WIRE CLIP	108	HEAD COMP
2	RECOIL STARTER CASE COMP	67	START MOTOR	109	SHROUD
3	STARTER RETURN SPRING	68	FLANGE BOLTM8X35	110	BOLT
4	RECOIL STARTER PULLEY	69	RELAY	111	PUSH ROD GUIDE PLATE
5	RECOIL STARTER KNOB	70	FLANGE BOLTM5X20	112	PIVOT BOLT
6	RECOIL STARTER ROPE		FLEXIBILITY GASKET	113	VALVE ROCKET ARM
7	RATCHET SPRING	71	DOWEL PIN8X14	114	ROCKER ARM PIVOT
8	RATCHET GUIDE SPRING	72	RADIAL BALL BEARING 6207/C3	115	PIVOT ADJUSTING NUT
9	RATCHET STARTER	73	CASE COVER PACKING	116	SPARK PLUG
10	RATCHET GUIDE	74	OIL LEVEL SWITCH ASSY	117	CARBURETOR INSULATOR PACKING
11	RATCHET GUIDE BOLT	75	RADIAL BALL BEARING6202/P6	118	CARBURETOR INSULATOR
13	FLANGE BOLTM6X12	76	CAMSHAFT COMP	119	CARBURETOR PACKING
14	FAN CORER COMP	77	BALANCE GEAR	120	CARBURETOR ASSY
24	OIL FILLER CAP	78	KEY	121	AIR CLEANER PACKING
25	OIL FILLER CAP PACKING	79	CRANKSHAFT COMP	122	CYLINDER HEAD CASKET
26	FLANGE BOLTM8X40	80	GOVERNOR SLIDER	123	DOWEL PIN
27	OIL SEAL	81	GOVERNOR SHAFT CLIP	124	IGNITION
28	CRANKCASE COVER	82	GOVERNOR SHAFT	125	BOLT M6X29
29	AIR CLEANER PACKING	83	GOVERNOR WEIGHT PIN	201	ENRICHMENT SET ASSY
30	HEAD OVER PACKING	84	GOVERNOR WEIGHT	202	STARTER ASSEMBLY(1+2...11)
31	HEAD COVER COMP	85	GOVERNOR WEIGHT HOLDER		
32	HEAD COVER BOLT COMP	86	WASHER		
33	TUBE	87	CONNECTING ROD ASSEMBLY		
46	GOVERNOR ROD	88	PISTON PIN		
47	THROTTLE RETURN SPRING	89	PISTON PIN CLIP		
48	CONTROL ASSY	90	PISTON		
49	GOVERNOR ARM	91	OIL SEAL SET COMP		
50	GOVERNOR ARM BOLT		SECOND RING SET		
51	GOVERNOR SPRING		FIRST RING SET		
52	COVER ARM SHAFT	92	EX, VALVE		
53	WASHER8.2X17X0.8	93	IN, VALVE		
54	PIN CLIP	94	VALVE SPRING WASHER		
55	SPECIAL NUT	95	VALVE OIL		
56	STARTER PULLEY COMP	96	VALVE SPRING		
57	COOLING FAN	97	IN , VALVE SPRING RETAINER		
58	FLYWHEEL COMP	98	EX , VALVE SPRING RETAINER		
59	FLANGE BOLTM6X29	99	VALVE ROTATOR		
60	ELECTRIFY COIL	102	DRAIN PLUG WASHER		
61	WIRE FLAT	103	DRAIN PLUG BOLT		
62	PACKING	104	VALVE LIFTER		
63	CRANKCASE ASSY	105	PUSH ROD		
64	OIL SEAL	106	BOLT		
65	DIODE COMP	107	BOLT		