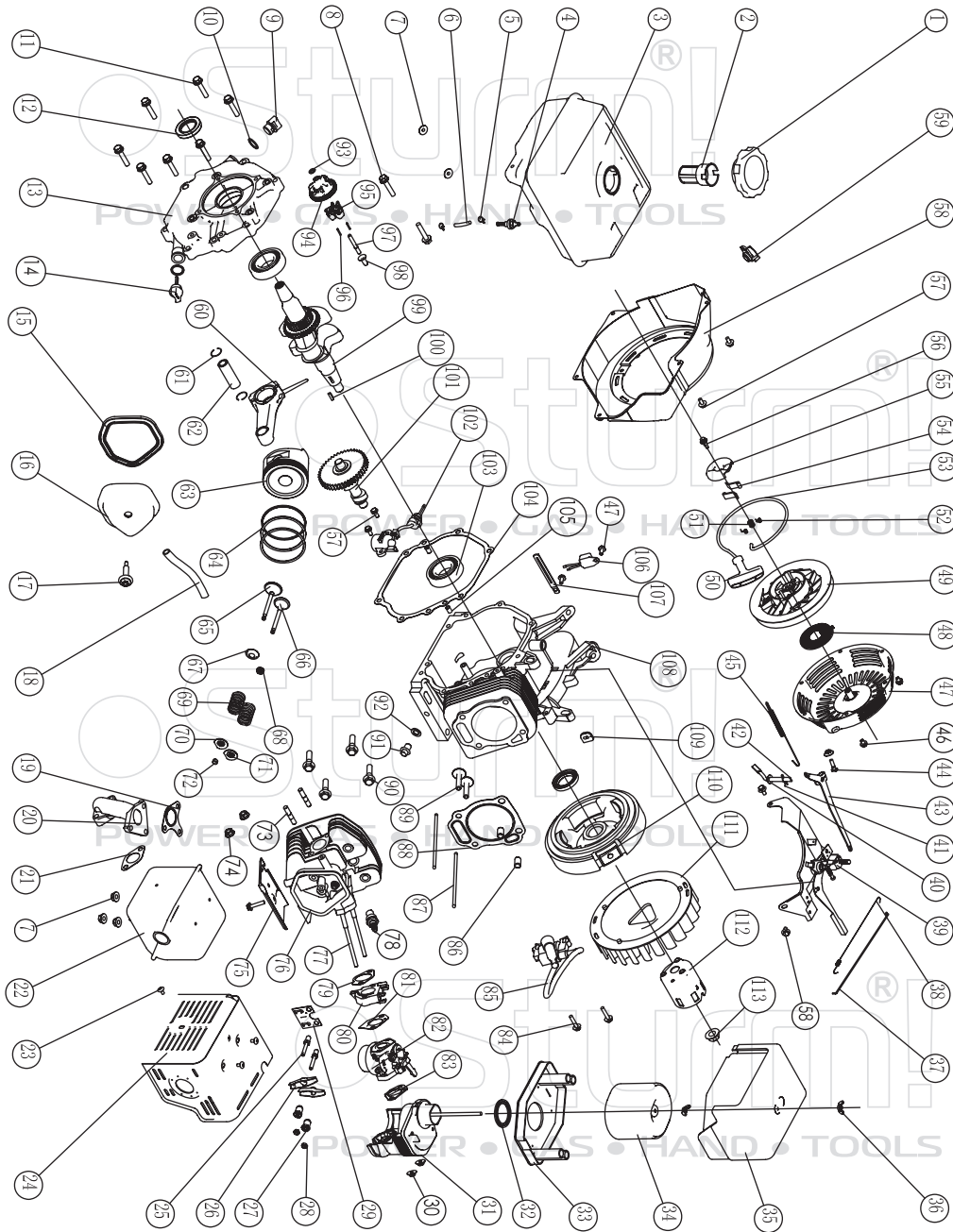


## BP8710

NO.	DESCRIPTION
1	ENGINE
2A	PUMP BODY
3A	PUMP BODY "O" SEAL
4	HEXAGON SCREWS M8x55
5A	IMPELLER WEAR RING
6A	IMPELLER SEALS
7A	IMPELLER
8A	SPIRAL CASE
9A	SPIRAL CASE "O" SEAL
10A	PUMP COVER
11	FLANGE BOLT M10x32
12	PLUG "O" SEAL
13	NON-RETURN VALVE
14	PLUG
15	FLUME(NPT)
16	ELBOW DRAFT TUBE(NPT)
17	SEAL PACKING
18A	CASING WEAR RING
19	WASHER
20	WASHER
21	WASHER
22	FRAME
23	BOTTOM RUBBER (I)
24	BOTTOM RUBBER (II)
25	NUT M8

ST20120724



## ENGINE FOR BP8710

No.	DESCRIPTION	No.	DESCRIPTION	No.	DESCRIPTION
1	FUEL FILLER CAP COMP	40	WASHERS. 2X17X0.8	77	BOLT
2	OIL FILTER	41	PIN CLIP	78	SPARK PLUG
3	FUEL TANK COMP	42	COVER ARM SHAFT	79	CARBURETOR INSULATOR PACKING
4	FUEL TANK JOINT	43	GOVERNOR ARM	80	CARBURETOR INSULATOR
5	CLIP	44	GOVERNOR ARM BOLT	81	CARBURETOR PACKING
6	TUBE	45	GOVERNOR SPRING	82	CARBURETOR ASSY
7	NUT M8	46	FLANGE BOLTM6X8	83	AIR CLEANER PACKING
8	FLANGE BOLTM8X25	47	RECOIL STARTER CASE COMP	84	BOLT M6X29
9	OIL FILLER CAP	48	STARTER RETURN SPRING	85	IGNITION
10	OIL FILLER CAP PACKING	49	RECOIL STARTER PULLEY	86	DOWEL PIN
11	FLANGE BOLTM8X40	50	RECOIL STARTER KNOB	87	PUSH ROD
12	OIL SEAL	51	RATCHET GUIDE SPRING	88	CYLINDER HEAD CASKET
13	CRANKCASE COVER	52	RATCHET SPRING	89	VALVE LIFTER
14	AIR CLEANER PACKING	53	RECOIL STARTER ROPE	90	BOLT
15	HEAD OVER PACKING	54	RATCHET STARTER	91	DRAIN PLUG BOLT
16	HEAD COVER COMP	55	RATCHET GUIDE	92	DRAIN PLUG WASHER
17	HEAD COVER BOLT COMP	56	RATCHET GUIDE BOLT	93	WASHER
18	TUBE	57	FLANGE BOLTM6X12	94	GOVERNOR WEIGHT HOLDER
19	EX PIPE GASKET	58	FAN CORER COMP	95	GOVERNOR WEIGHT
20	EX PIPE	59	SWITCH	96	GOVERNOR WEIGHT PIN
21	MUFFLER GASKET	60	CONNECTING ROD ASSEMBLY	97	GOVERNOR SHAFT
22	MUFFLER COMP	61	PISTON PIN CLIP	98	GOVERNOR SLIDER
23	TAPPING SCREEN M5X10	62	PISTON PIN	99	CRANKSHAFT COMP
24	MUFFLER PROTECTOR COMP	63	PISTON	100	KEY
25	PIVOT BOLT	64	OIL SEAL SET COMP	101	CAMSHAFT COMP
26	VALVE ROCKET ARM		SECOND RING SET	102	OIL LEVEL SWITCH ASSY
27	ROCKER ARM PIVOT		FIRST RING SET	103	RADIAL BALL BEARING
28	PIVOT ADJUSTING NUT	65	EX, VALVE	104	CASE COVER PACKING
29	PUSH ROD GUIDE PLATE	66	IN, VALVE	105	DOWEL PIN 8X14
30	NUT M6	67	VALVE SPRING WASHER	106	DIODE COMP
31	AIR CLEAN ELBOW COMP	68	VALVE OIL	107	WIRE CLIP
32	ELBOW PACKING	69	VALVE SPRING	108	CRANKCASE ASSY
33	SILENCER NOSE	70	EX, VALVE SPRING RETAINER	109	PACKING
34	AIR CLEAN ELEMENT	71	IN, VALVE SPRING RETAINER	110	FLYWHEEL COMP
35	AIR CLEAN COVER	72	VALVE ROTATOR	111	COOLING FAN
36	AIR CLEAN COVER NUT	73	BOLT	112	STARTER PULLEY COMP
37	GOVERNOR ROD	74	NUT M8	113	SPECIAL NUT
38	THROTTLE RETURN SPRING	75	SHROUD		
39	CONTROL ASSY	76	HEAD COMP		

ST20110120