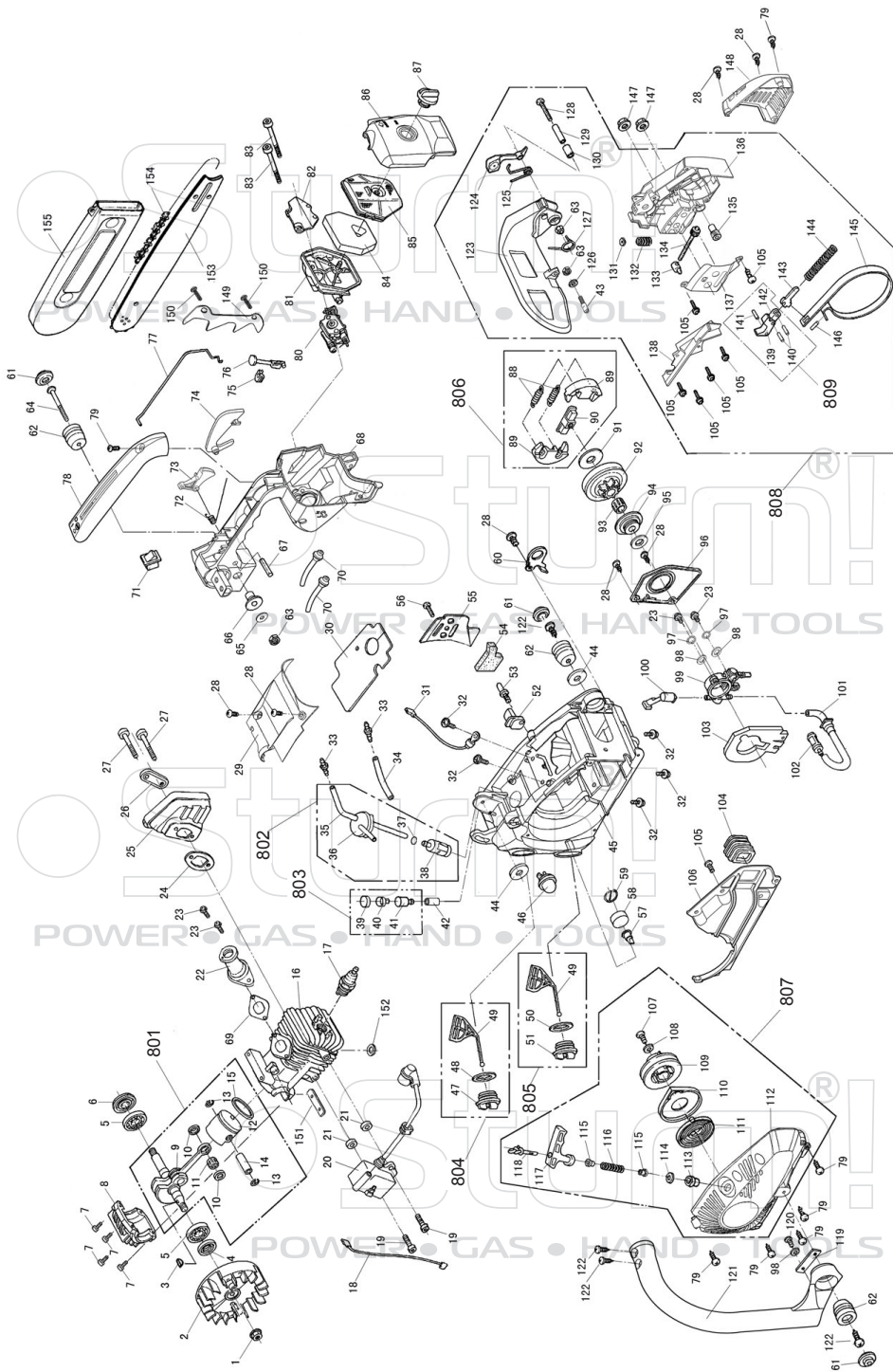


GC9912



NO.	DESCRIPTION	NO.	DESCRIPTION	NO.	DESCRIPTION
1	NUT M8x1	56	SCREW ST4.2x11	111	STARTER SPRING
2	FLYWHEEL-ASSY	57	BREATH NIPPLE	112	STARTER HOUSING
3	WOODRUFF KEY3x10	58	BREATH NIPPLE COVER	113	ROPE JACKET
4	SMALL OIL SEAL 12x22x4.5	59	BREATH NIPPLE SPRING	114	WASHER-STARTER HANDLE
5	BALL BEARING 6001Z	60	POTHOOK	115	WASHER
6	BIG OIL SEAL 12x28x6	61	RUBBER PAD COVER	116	KICK BACK SPRING
7	SCREW M5x20	62	PAD	117	STARTER HANDLE
8	CRANKCASE BEARING SUPPORT	63	NUT M5	118	STARTER ROPE
9	CRANK SHAFT ASSY	64	SCREW M5x45	119	PAD RUBBER SUPPOTR
10	NEEDLE BEARING SNAP	65	WASHER	120	SCREW ST3.5x10
11	NEEDLE BEARING	66	COVER CAP	121	HANDLE ASST
12	PISTON	67	TRIGGER PIN 5x26	122	SCREW ST4.8x16
13	PIN CIRCLIP	68	HANDLE	123	FRONT GUARD
14	PISTON PIN	69	INTAKE GASKET	124	LEVERAGE
15	PISTON RING	70	CARBURATOR PIPE	125	LEVERAGE SPRING
16	CYLINDER	71	SWITCH STOP	126	SPRING WASHER
17	SPARK PLUG	72	TRIGGER SPRING	127	BRAKE SPRING
18	FLAMEOUT WIRE	73	TRIGGER	128	SCREW M5x30
19	SCREW M4x20	74	TRIGGER LEVER	129	BUSHING
20	ELECTRON IGNITION ASSY	75	CHOKE KNOB GROMMET	130	LEVERAGE PIN
21	PAPER GASKET	76	CHOKE KNOB	131	BRAKE SPRING SUPPORT
22	INTAKE HOSE	77	ROD THROTTLE	132	FORNT GUARD SPRING
23	SCREW M4x14	78	REAR HANDLE COVER	133	CHAIN ADJUSTING PIN
24	MUFFLER WASHER	79	SCRW ST4.2x16	134	CHAIN ADJUSTING SPROCKET
25	MUFFLER ASSY	80	CHINESE CARBURATOR ASSY	135	CHAIN ADJUSTING SCREW
26	MUFFLER COVER	81	AIR FILTER SUPPORT	136	RIGHT COVER
27	SCREW M5x40	82	AIR FILTER COVER	137	CHAIN ADJUSTING COVER
28	SCREW ST4.2x13	83	SCREW M5x45	138	SPRING BRAKE COVER
29	TOP COVER	84	AIR FILTER SPONGE	139	MAIN LEVER
30	PAPER GASKET	85	AIR FILTER SPONGE COVER	140	SHORT PIN
31	GROUND WIRE	86	AIR FILTER COVER	141	LONG PIN
32	SCREW M5x16	87	AIR FILTER KNOB	142	AUXILIARY LEVER
33	HOSE ADAPTER	88	CLUTCH SPRING	143	BREAK LEVEL
34	OIL RETURN PIPE	89	CLUTCH SUPPORT	144	BRAKE SPRING
35	FUEL HOSE	90	CLUTCH RETAINER	145	BAND BRAKE
36	FUEL HOSE SUPPORT	91	CLUTCH WASHER	146	PIN
37	CONNECT PIPE CLIP	92	CLUTCH DRUM	147	BAR NUT
38	FUEL FILTER	93	CLUTCH NEEDLE BEARING	148	MUFFLER COVER
39	BALANCE COVER	94	WORM	149	SPIKE
40	BALANCE BODY	95	OIL PUMP WASHER	150	SCREW ST4.8x14
41	BALANCE HOUSING	96	OIL PUMP COVER	151	CYLINDE SIDE GASKET
42	BALANCE CONNECTOR	97	SPRING WASHER	152	INSERTS
43	PIN	98	WASHER	153	GUIDE BAR
44	WASHER	99	OIL PUMP ASSY	154	CHAIN
45	FUEL TANK	100	FUEL INJECTION NOZZLE	155	BAR PROTECTOR
46	PRIMER BULB	101	OIL INLET HOSE	801	CRANK SHAFT AND PISTON ASSY
47	FUEL CAP	102	OIL FILTER	802	FUEL FILTER ASSY
48	FUEL CAP WASHER	103	DUSTPROOF SPONGE	803	BALANCE ASSY
49	OIL CAP HOLDING	104	AIR INTAKE SUPPORT	804	FUEL CAP ASSY
50	OIL CAP WASHER	105	SCREW ST4.2x8.5	805	OIL CAP ASSY
51	OIL CAP	106	FAN BAFFLE	806	CLUTCH ASSY
52	CHAIN CATCHER	107	SCREW ST4.8x16	807	STARTER ASSY
53	SCREW	108	WASHER φ5x15x1.5	808	BRAKE ASSY
54	BAR PLATE SPONGE	109	PULLEY STARTER	809	MAIN AND AUXILIARY LEVER ASSY
55	BAR PLATE	110	SPRING COVER		