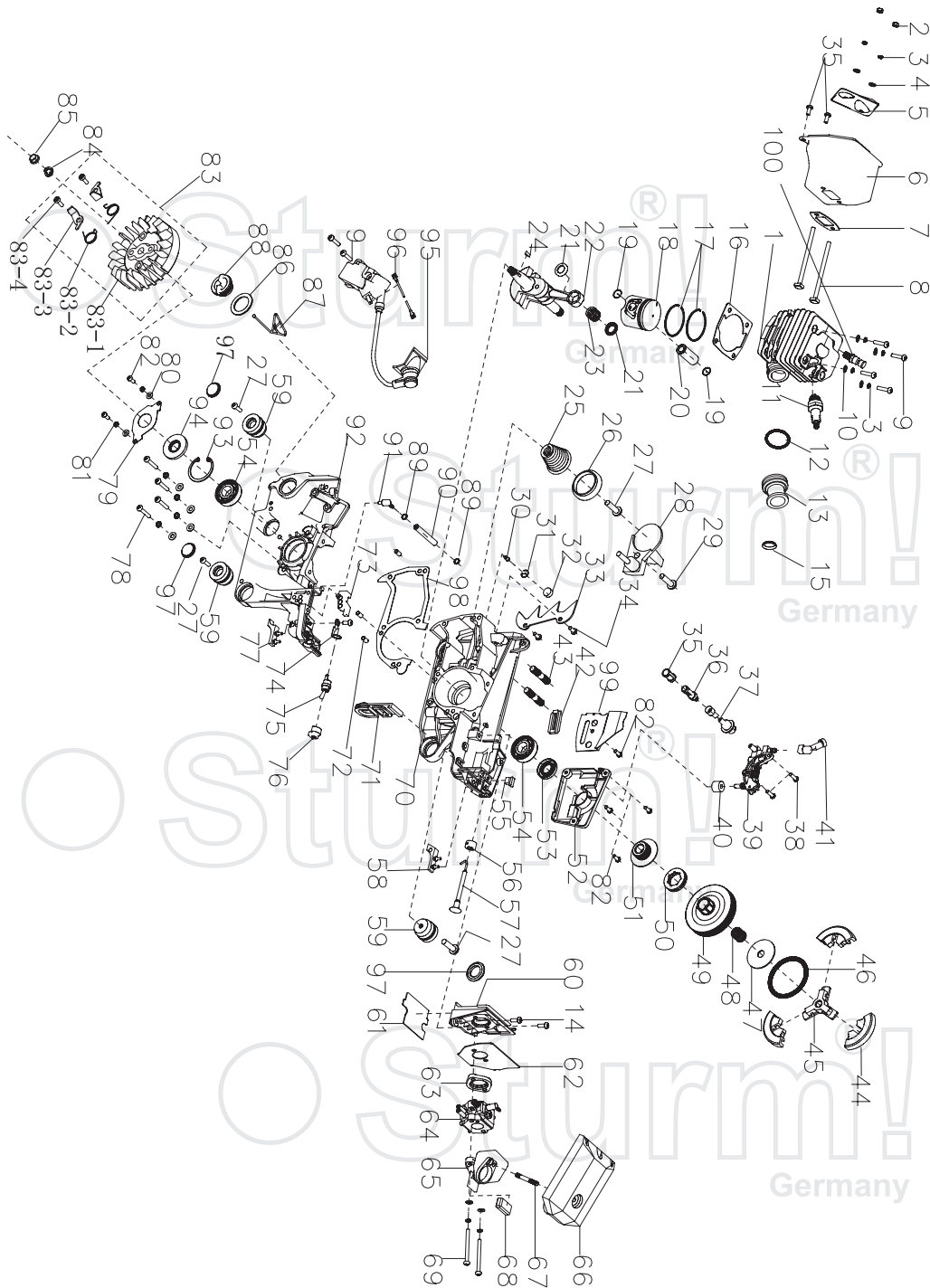


## GC99502

NO.	DESCRIPTION	NO.	DESCRIPTION
1	RIGHT COVER ASSEMBLY	38	STARTER PALTE
2	SCREW M5X36	39	COIL SPRING GLAND
3	SHIELD PIPE	40	START COIL SPRING
4	PIPE	41	START HANDLE
5	PIN 3 X 14	42	START STRETCHING WIRE
6	TENSION BLOCK	43	LH SHEATHING
7	TIGHTENER SCREW	44	STARTER COVER
8	TENSIONER COVER PLATE	45	SHOCK RUBBER
9	TAPPING SCREW ST4.2 X 9.5	46	BASE
10	FRONT DAMPER	47	SHOCK RUBBER GLAND
11	BRAKE TORSION ROD SPRING	48	SCREW
12	WASHER 5.2X20X1.2	49	DUST COVER
13	NUT M5	50	ANTI-DROP PLATE
14	SPRING BASE	51	PACKING WASHER 24X34X1.5
15	FRONT DAMPER SPRING	52	PETROL COVER
16	MAIN LEVEL	53	FUEL TUBE
17	SECONDARY PULL-ROD	54	PETROL FILTER COMPONENTS
18	PIN 3X9	55	BALANCER COVER
19	BRAKE CONTROL ROD	56	BALANCER RUBBER
20	BRAKE SPRING	57	BALANCER BODY
21	BRAKE STRAP	58	BALANCER ROOT
22	TAPPING SCREW ST4.2X12	59	THROTTLE ROD
23	BRAKE SPRING COVER PLATE	60	TRIGGER
24	TENSION BLOCK	61	TRIGGER TORSION ROD SPRING
25	CHAIN GUIDE BLOCK	62	PIN6X22
26	RIGHT COVER	63	HANDLE COVER
27	NUT M8	64	TRIGGER CONTROL RACK
28	AIR FILTER LOCK NUT	65	TAPPING SCREW ST4.2X25
29	LOCK NUT WASHER 15X26X1	66	FRONT HANDLE ASSEMBLY
30	AIR FILTER COVER	67	TAPPING ST5X16
31	IDLE ADJUSTING GUIDE SET	68	DUST SHIELD
32	SCREW M5X16	69	PUMP TUBE
33	UPPER COVER PLATE	70	PRIMER BULB
34	STARTER ASSEMBLY	71	SCAVENGE TUBE
35	GUIDE FLOW COVER	72	OIL TUBE TIE-IN
36	SCREW M5X10	73	OIL TUBE CLIP
37	WASHER 5	74	SCAVENGE NOZZLE



## ENGINE FOR GC99502

NO	DESCRIPTION	NO	DESCRIPTION
1	CYLINDER	53	OIL SEAL 15X28X4.5
2	NUT M5	54	BEARING 6202D GRADE 15X35X11
3	WASHER 5	55	CUSHION BLOCK
4	WASHER 5	56	CHOKE ROD FIXATION ROOT
5	MUFFLER COVER PLATE	57	CHOKE ROD
6	MUFFLER BODY	58	RIGHT SHOCK BLOCK
7	MUFFLER SEALING PLATE	59	SHOCK SEAT
8	MUFFLER CONNECTING SCREW	60	AIR INTAKE TUBE SUPPORT
9	SCREW M5X20	61	TIE PLATE
10	WASHER 5	62	SEALING PLATE OF AIR INTAKE SUPPORT
11	SPARK PLUG	63	AIR INTAKE TUBE FLANGE
12	SPRING	64	CARBURETOR
13	AIR INTAKE TUBE	65	AIR INTAKE SOCKET
14	SCREW	66	AIR FILTER
15	HOLD COIL	67	DOUBLE-SCREW BOLT GM5-M5X30
16	CYLINDER SEALING PLATE	68	CUSHION OF AIR INTAKE SOCKET
17	PISTON RING	69	SCREW M5X50
18	PISTON	70	RIGHT CASE
19	PISTON PIN CIRCLIP	71	DUST PLATE
20	PISTON PIN	72	PIN 5X10
21	NEEDLE BEARING RING	73	SHOCK BLOCK 2
22	CRANK SHAFT COMPONENTS	74	GROUND STRIP
23	NEEDLE BEARING 11X15X12.5	75	FLAMEOUT SWITCH
24	SEMICIRCULAR KEY 3X3.5X10	76	FLAMEOUT SWITCH SOCKET
25	CONICAL SPRING BASE	77	LEFT SHOCK BLOCK
26	CONICAL SPREADER BASE	78	SCREW M5X25
27	TAPPING SCREW ST5X16	79	OIL SHIELD
28	CHAIN SHIELD	80	WASHER 4
29	SCREW M5X16	81	WASHER 4
30	AERATION JET	82	SCREW M4X10
31	AERATION JET CIRCLIP	83	FLYWHEEL ASSEMBLY
32	SPONGE TRANSITION BLOCK	83-1	FLYWHEEL
33	PINION RACK	83-2	TORSION ROD SPRING
34	SCREW M5X10	83-3	PUSHER DOG
35	OIL FILTER SCREEN	83-4	PUSHER DOG SCREW
36	OIL FILTER	84	WASHER 8
37	OIL TUBE	85	NUT M8X1
38	SCREW M4X14	86	SEALING WASHER20X30X2
39	OIL PUMP	87	ANTI-DROP PLATE
40	SPONGE TRANSITION COIL	88	OIL COVER
41	NOZZLE	89	SUCTION TUBE CIRCLIP
42	CHAIN GUIDE BLOCK	90	SUCTION TUBE 2.5X7X10.5
43	DOUBLE-SCREW BOLT AYM8-M8X26-8.8	91	SUCTION JET
44	SHOE BLOCK	92	LEFT CASE
45	RETAINER	93	SHIELD RING 35
46	CLUTCH SPRING	94	OIL SEAL 15X35X4.5
47	CLUTCH ADJUSTING WASHER	95	IGNITER
48	NEEDLE BEARING 12X15X14.5	96	EXTINCTION CONDUCTOR
49	CLUTCH SHELL	97	DUST COVER
50	SPROCKET	98	CASE BODY SEALING PLATE
51	WORM	99	DAMPER
52	COVER PLATE	100	DECOMPRESSOR