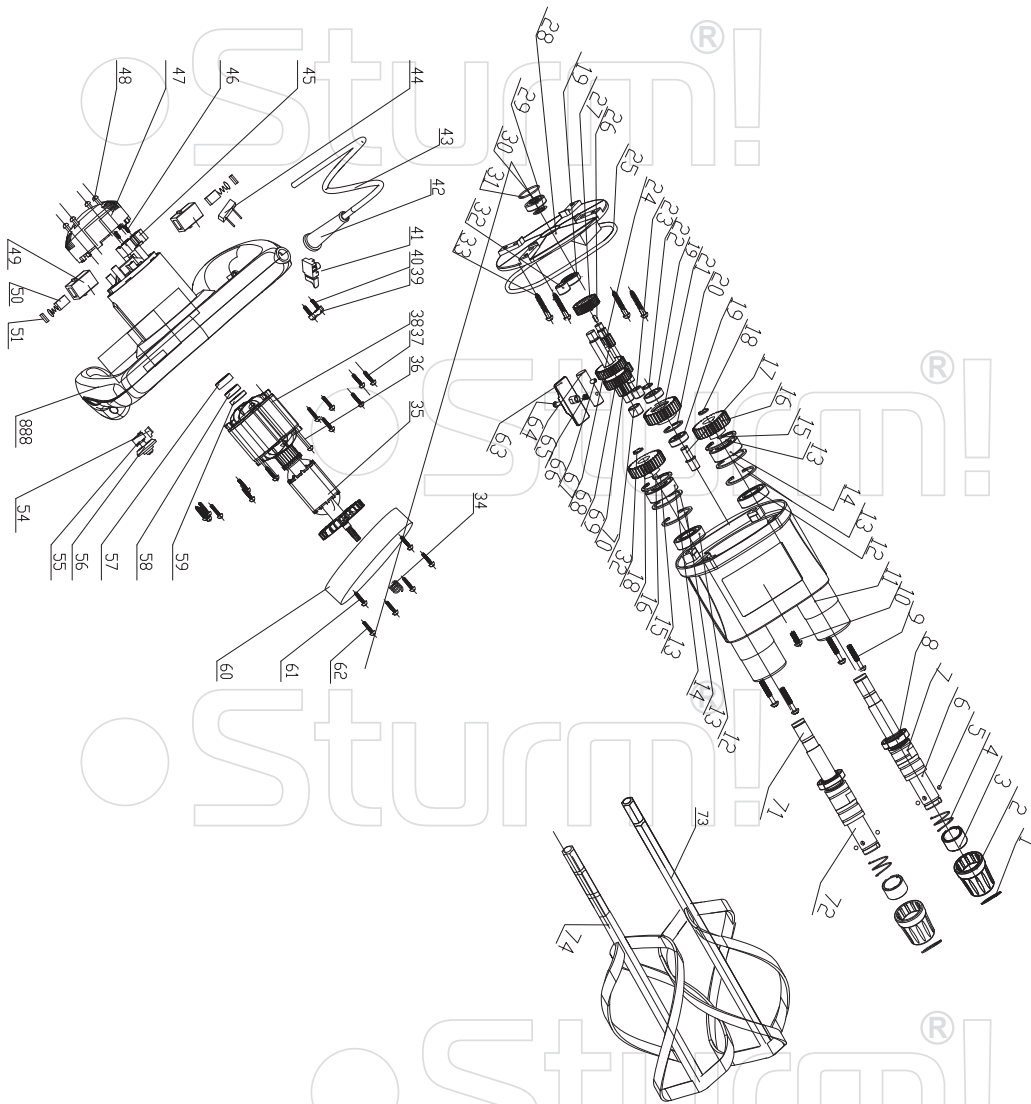


ID2018MP



NO.	DESCRIPTION	NO.	DESCRIPTION
1	ELASTIC COLLAR 20	38	STATOR SUBASSEMBLY
2	COLLET OUTER COVER	39	CABLE PLATE
3	COLLET INNER SLEEVE	40	CROSSING TAPPING SCREW ST4X14-F
4	COLLET SPRING	41	SWITCH(FA2-6/2D-A1-B1-F3)
5	STEEL BALL 4.76	42	CABLE SLEEVE
6	COLLET 1	43	CABLE
7	OUTPUT SHAFT 1	44	CAPACITANCE
8	OIL SEAL	45	INTEYRATING BLOCK
9	CROSS PAN HEAD SCREW M5X20	46	CROSSING TAPPING SCREW ST3X10-F
10	CROSS ROUND HEAD SCREW M5X10	47	BACK COVER
11	GEAR BOX	48	CROSSING TAPPING SCREW ST4X22-F
12	BEARING 6003-2Z	49	BRUSHHOLDER
13	ELASTIC COLLAR 35	50	CARBON BRUSH
14	BEARING 6202-2Z	51	BRUSH COVER
15	KEY 5X12	54	POTENTIOMETERS SLEEVE
16	BIG GEAR	55	POTENTIOMETER
17	IDLER SHAFT	56	POTENTIOMETER KNOB
18	ELASTIC COLLAR 15	57	COVER OF BEARING 608-2Z
19	BEARING 608-2Z	58	BEARING 608Z
20	ELASTIC COLLAR 22	59	MAGNETIC RING
21	IDLER	60	AIRFLOW COVER
22	ELASTIC COLLAR 8	61	CROSSING TAPPING SCREW ST3X16-C
23	NEEDLE BEARING HK0810	62	CROSSING TAPPING SCREW ST3X22C
24	MAIN DRIVING SHAFT	63	PUSHING BUTTON
25	PAPER PAD	64	PUSHING BUTTON FIXING SCREW
26	KEY 3X8	65	SHIFT LEVER
27	DIAGONAL GEAR	66	PUSHING BUTTON SPRING
28	MIDDLE COVER	67	PIN
29	WOOLEN WASHER	68	KEY 5X45
30	BEARING 609Z	69	TWOGANG GEAR
31	O-RING	70	VARIABLE SHAFT
32	NEEDLE BEARING HK1010	71	OUTPUT SHAFT 2
33	RCROSSING TAPPING SCREW ST4.8X55-F	72	COLLET 2
34	MOTOR SPRING	73	MIXING PADDLE 1
35	MOTOR SUBASSEMBLY	74	MIXING PADDLE 2
36	CROSSING TAPPING SCREW ST5X65-F	888	HOUSING ASSEMBLE
37	CROSSING TAPPING SCREW ST4X18-F		

ST20120817