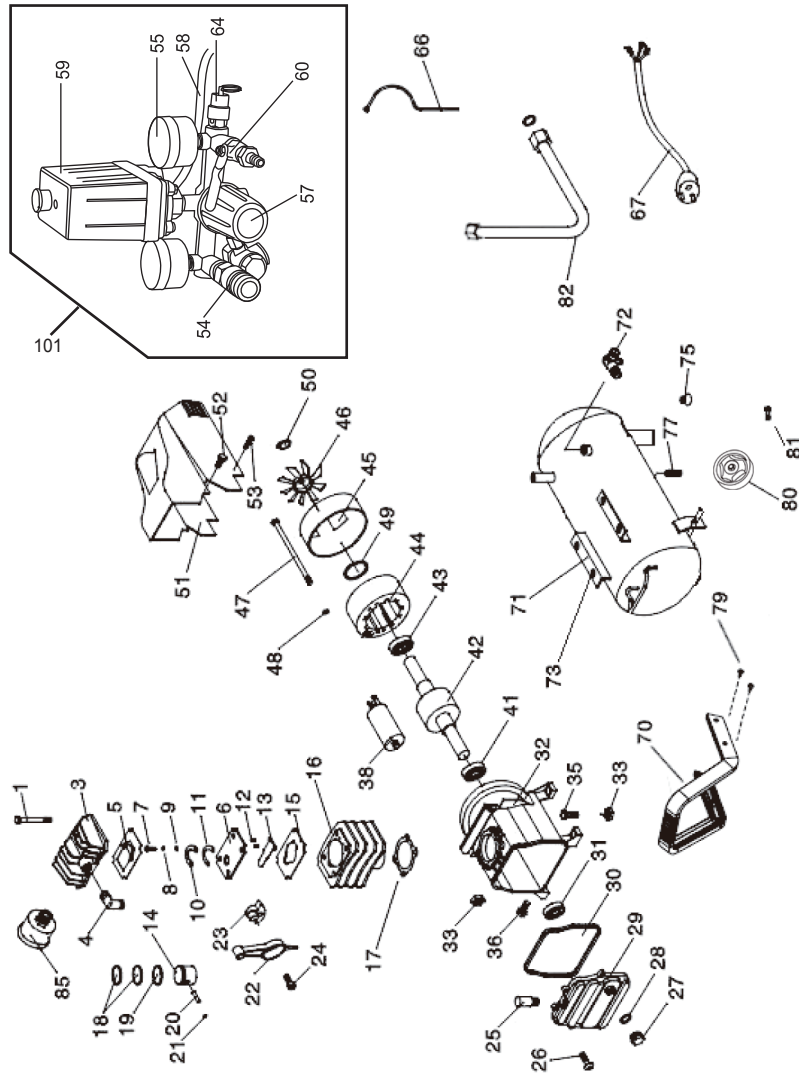


AC-9315A



NO.	DESCRIPTION	NO.	DESCRIPTION
1	HEX BOLT WITH WASHER	42	ROTOR
3	CYLINDER HEAD	43	BEARING 6202
4	EXHAUST ELBOW	44	STATOR WITH THERMAL PROTECTOR
5	CYLINDER GASKET	45	REAR MOTOR COVER
6	VALVE PLATE	46	FAN
7	SCREW	47	HEX BOLT
8	LOCKWASHER	48	LOCK WASHER
9	FLAT WASHER	49	SPACER
10	VALVE LIMITER	50	EXT RETAINING RING
11	VALVE REED	51	FAN COVER
12	POSITION PIN	52	HEX BOLT
13	INLET VALVE	53	SCREW
14	PISTON	54	QUICK COUPLER
15	CYLINDER GASKET UPPER	55	PRESSURE GAUGE
16	CYLINDER	57	REGULATOR
17	CYLINDER GASKET LOWER	58	INNERAL WIRE
18	COMPRESSION RING	59	PRESSURE SWITCH
19	OIL RING	60	BALL VALVE COUPLER
20	PISTON PIN	64	SAFETY VALVE
21	EXT RETAINING RING	66	RELIEF TUBE ASSEMBLY
22	CONNECTING ROD	67	POWER CORD & PLUG
23	ECCENTRICITY	70	HANDLE GRIP
24	SCREW	71	TANK
25	BREATH PIPE	72	CHECK VALVE
26	SCREW	73	HEX NUT
27	OIL INDICATOR SIGHT	75	FOOT
28	OIL INDICATOR SEAL	77	DRAIN VALVE
29	CRANKCASE COVER	79	SCREW
30	COVER SEAL	80	WHEEL
31	OIL SEAL	81	PIN
32	CRANKCASE	82	DISCHARGE PIPE ASSEMBLY
33	HEX NUT	85	AIR FILTER
35	HEX BOLT	101	PRESSURE SWITCH AND AIR CONNECTOR ASSEMBLY
36	OIL PLUG		
38	CAPACITOR		
41	BEARING 6204		