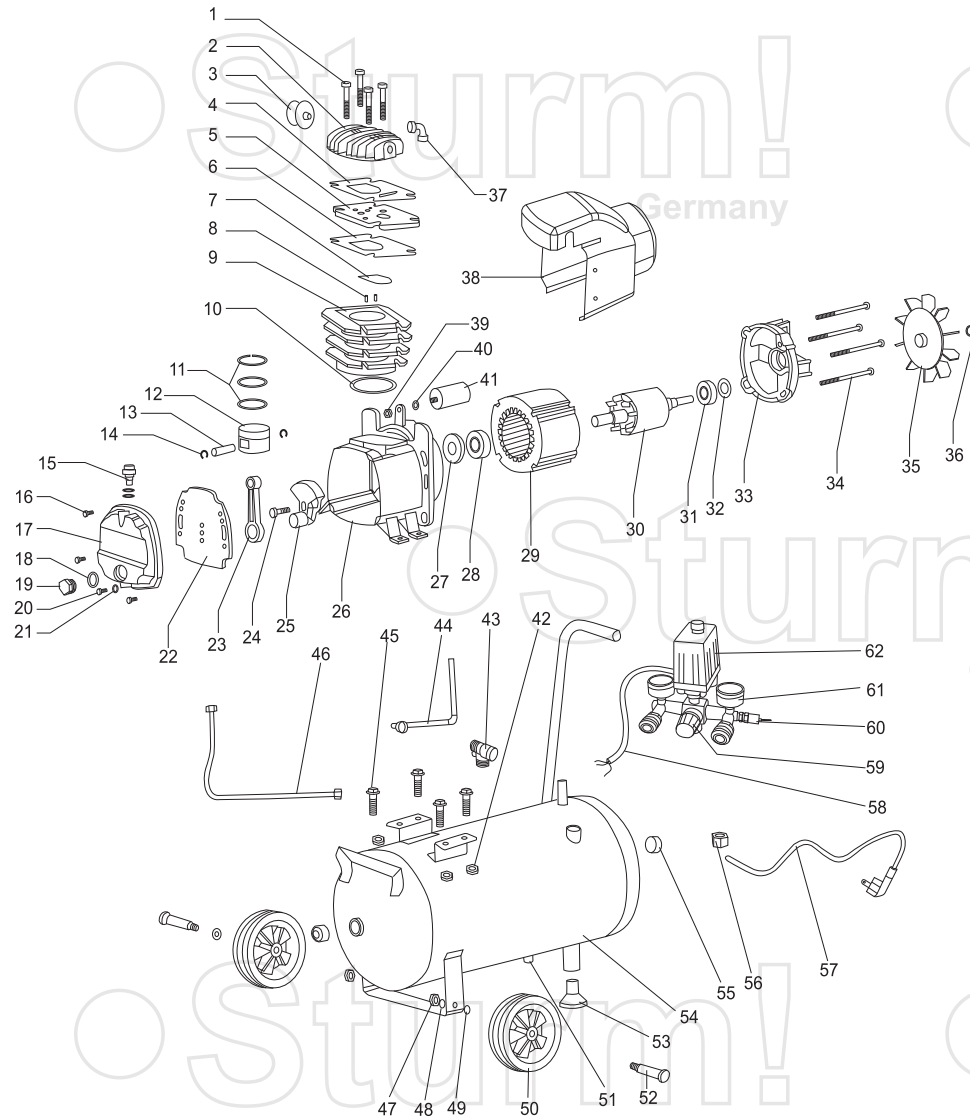


AC9316 / AC93165



NO.	DESCRIPTION	NO.	DESCRIPTION
1	BOLT M8X105	32	WAVE WASHER D35
2	CYLINDER HEAD	33	MOTOR COVER
3	AIR FILTER	34	BOLT M5X103
4	CYLINDER HEAD GASKET	35	FAN
5	VALVE PLATE	36	CIRCLIP
6	VALVE PLATE GASKET	37	CONNECTOR
7	VALVE CLACK	38	FAN COVER
8	PIN	39	NUT M8
9	CYLINDER	40	DENTATION WASHER
10	CYLINDER GASKET	41	CAPACITANCE
11	PISTON RING	42	NUT M8
12	PISTON	43	UNILATERAL VALVE
13	PISTON PIN	44	RELEASE PIPE
14	CIRCLIP	45	BOLT M8X30
15	BREATH PIPE	46	DISCHARGE PIPE
16	BOLT M5X16	47	NUT M10
17	CRANK CASE COVER	48	SPRING
18	OIL LEVELER GASKET	49	WASHER
19	OIL LEVELER	50	WHEEL
20	BOLT M6X10	51	DRAIN COCK
21	O CIRCLIP	52	BLOT M10
22	RUBBER GASKET	53	FOOT
23	CONNECTING ROD	54	TANK
24	HEX BOLT M8X22(LEFT)	55	STEM RP1/2
25	CRANK	56	NUT RP1/4
26	CRANK CASE	57	POWER CORD
27	SEALING RING	58	INTERNAL WIRE
28	BEARING 6204	59	REGULATOR VALVE
29	STATOR	60	SAFETY VALVE
30	ROTOR	61	PRESSURE GAUGE
31	BEARING 6202	62	PRESSURE SWITCH

RU6020701