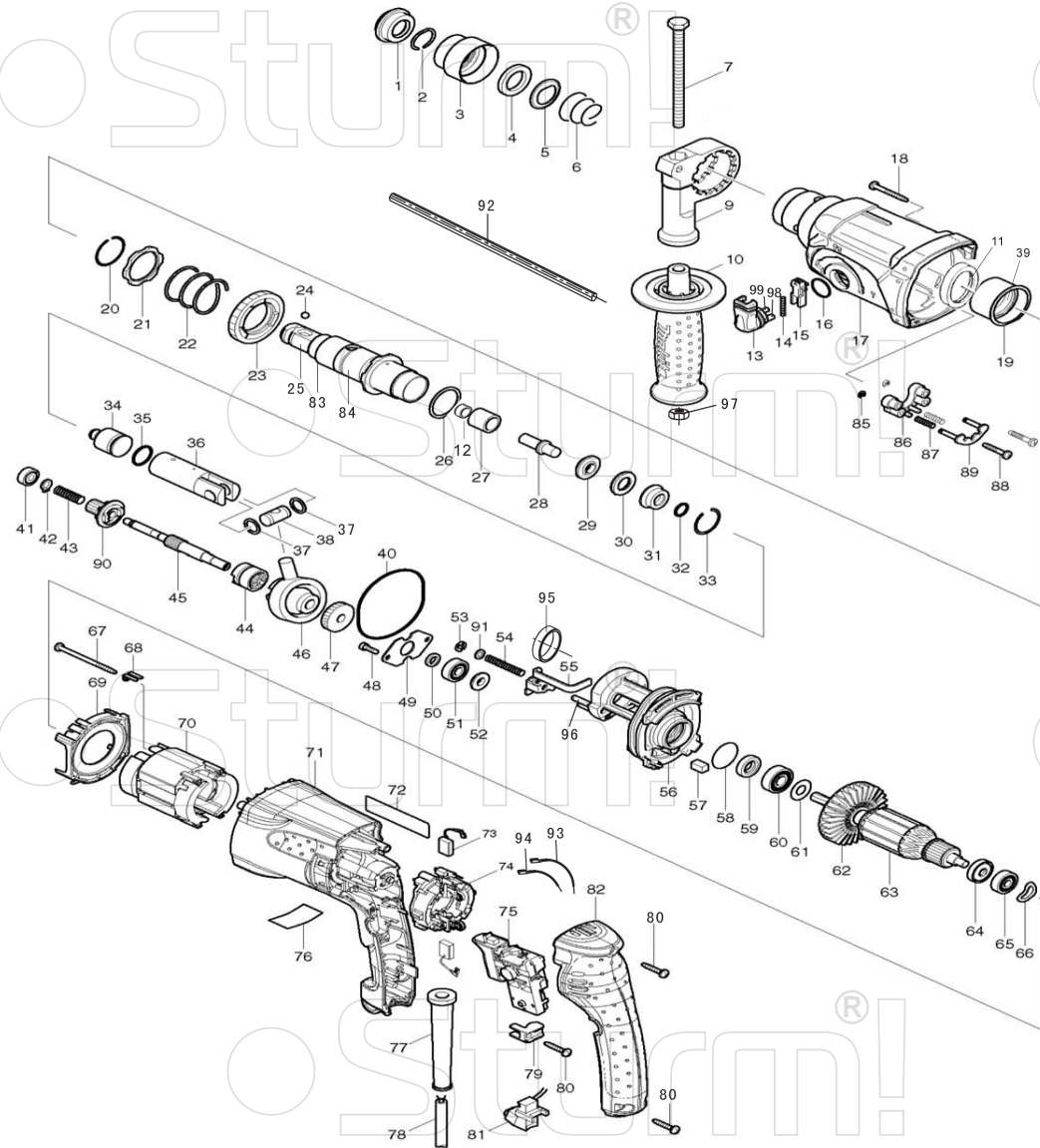


RH2510P



NO.	DESCRIPTION	NO.	DESCRIPTION
1	DUSTPROOF CAP	51	608 BEARING
2	CIRCLIP9×2	52	608 BEARING BUSHING
3	CHUCK COVER	53	CIRCLIP
4	WASHER	54	SPRING
5	WASHER	55	CLUTCH ELEMENT
6	SPRING	56	HOLDER
7	HEXAGEN BOLT	57	WOOLEN ELEMENT
9	CLAMP	58	O RING
10	AUXILIARY HANDLE	59	OIL SEAL 10×26×5
11	MECHANICAL SEAL	60	6000 BEARING
12	DOUBLE SEALING RING	61	WASHER
13	CHANGE KNOB	62	FAN
14	SPRING	63	ARMATURE
15	PLASTIC ELEMENT	64	WASHER
16	O RING17.3×2	65	607 BEARING
17	GEAR BOX	66	BEARING SLEEVE
18	SCREW ST4.2×35	67	SCREW ST4.2×60
19	BEARING BUSH	68	FASTENER
20	CIRCLIP29.5×1.5	69	WIND GUARD
21	WASHER	70	STATOR
22	SPRING 32×3.5	71	HOUSING
23	51TEETH BIG GEAR	72	LABEL
24	STEEL BALL C7.14	73	CARBON BRUSH
25	SMALL ROTARY SLEEVE	74	BRUSH HOLDER
26	WASHER	75	SWITCH
27	BUSHING	76	LABEL
28	STRIKER	77	CABEL SLEEVE
29	STRIKER BUSHING	78	CABLE&PLUG
30	RING	79	CABLE FASTENER
31	HOLDER	80	SCREW ST4.2×22
32	O RING	81	CAPACITOR
33	CIRCLIP27.5×2	82	REAR COVER
34	PISTON	83	CIRCLIP
35	O RING 16.3×3.1	84	ROTATING SLEEVE
36	CYLINDER	85	CIRCLIP
37	WASHER	86	FASTENER
38	PIN	87	SPRING
39	BEARING HK3012	88	SCREW ST4.2×25
40	SEAL RING	89	LOCATING PIECE
41	606 BEARING	90	CLUTCH GEAR
42	CIRCLIP 6.7×1	91	SPRING WASHER 5.6×9.8×0.8
43	SPRING	92	GAUGE
44	CLUTCH	93	WIRE
45	GEAR SHAFT	94	WIRE
46	SWASH BEARING	95	OIL SEAL 25×35×7
47	26 TEETH GEAR	96	PIN
48	SCREW	97	NUT
49	HOLDER OF BEARING 608	98	PIN
50	SEVERANCE RING 8.4×13×2.5	99	PIN