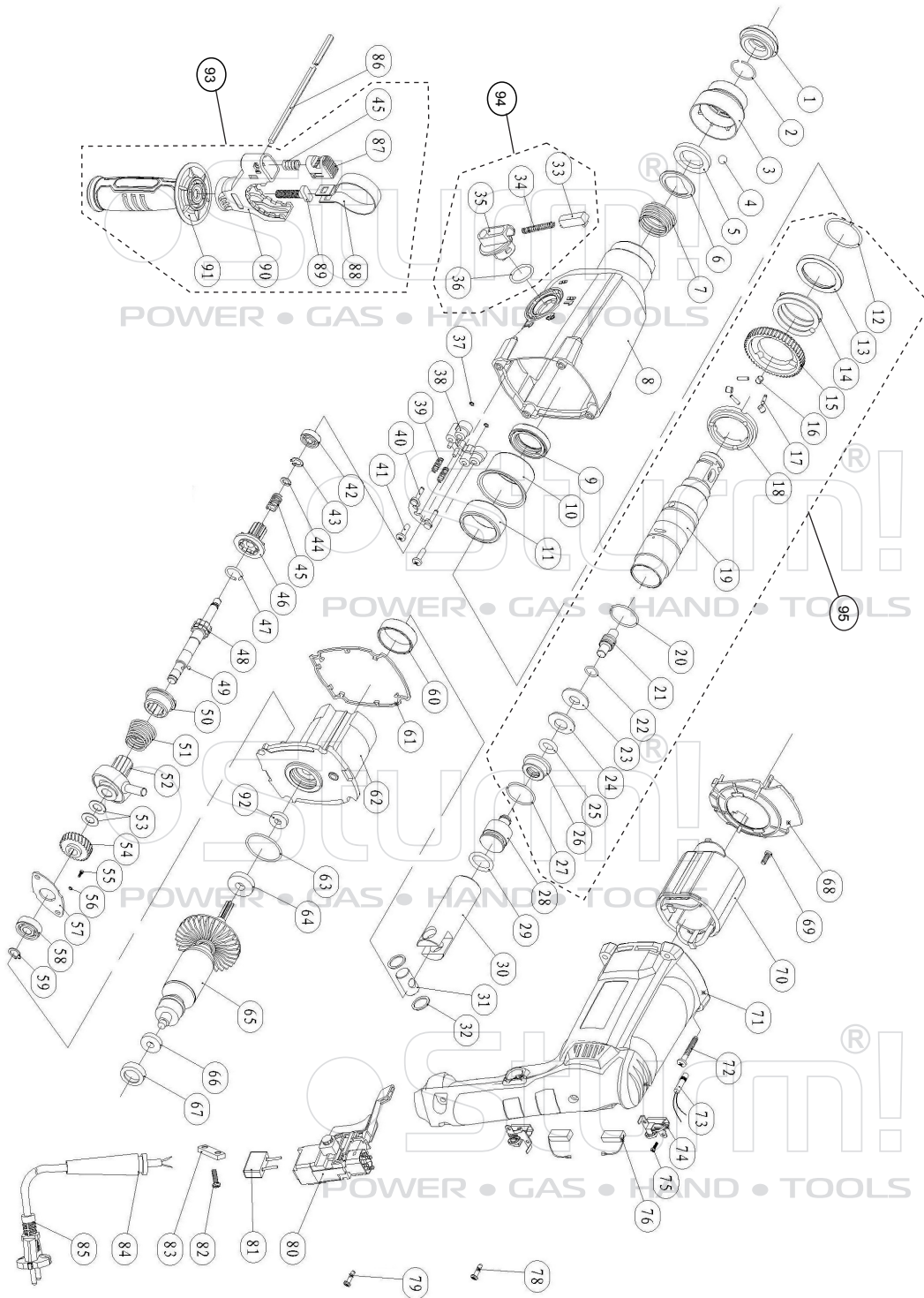


RH25911®



NO.	DESCRIPTION	NO.	DESCRIPTION	NO.	DESCRIPTION
1	FRONT CAP	34	SPRING W4.8*0.6*33	67	BEARING HOLDER(607)
2	RING 19*1.8	35	KNOB SET	68	FAN GUIDE
3	BALL HOLDER	36	O-RING 17.7*1.8	69	SELF-TAPPING SCREWS ST2.9*10
4	BALL 7.14	37	RING 3	70	STATOR
5	RING	38	HOLDER RACK SET	71	HOUSE
6	RING	39	SRING W5.6*0.6*18	72	SELF-TAPPING SCREWS ST4.2*22
7	SPRING W25-29.5*1.5*27	40	HOLDER RACK	73	INDUCTANCE
8	CYLINDER CASE	41	SELF-TAPPING SCREWS ST4.2*25F	74	BRUSH HOLDER
9	OIL SEAL FB25*35*7	42	BEARING 606ZZ	75	SELF-TAPPING SCREWS ST2.9*10
10	NEDDLE BEARING HOLDER	43	RING7	76	BRUSH
11	NEDDLE BEARING301237	44	WASHER 7	78	SELF-TAPPING SCREWS ST4.2*10
12	RING 27.5*2	45	WASHER 7.2*0.9*15	79	SELF-TAPPING SCREWS ST4.2*16
13	RING30.5*3.5	46	CLUTCH GEAR SET	80	SWITCH
14	SPRING 31*3.8*30	47	RING 13.5*1.2	81	CAPACITANCE
15	BIG BEAR	48	CONE GEAR	82	SELF-TAPPING SCREWS ST4.2*14
16	PIN 5*5	49	BALL 3	83	CABLE PLATE
17	PIN 2.5*10	50	PEEN CLUTCH	84	CABLE COVER
18	CLUTCH	51	SPARING 16-21*36*1.2	85	CABLE
19	CYLINDER	52	SWINGING ROD BEARING	86	BUTTON
20	RING28*1.5	53	WASHER 10.2*18*1	87	BUTTON
21	HAMMER STEM	54	HELICAL GEAR	88	HOOP
22	O-RING 11*1.5	55	HEX. SOCKET HD. BOLT M4*12	89	SCREW
23	HAMMER STEM WARSHER	56	SPRING WASHER	90	HOOP
24	WASHER 12*24.5*3.2	57	BEARING PLATE	91	AUXILIARY HANDLE
25	O-RING 9.5*3.5	58	BEARING 608ZZ	92	WASHER
26	LOW SHEATH	59	RING 8	93	AUXILIAY HANDLE ASSEMBLY
27	RING 28*1.8	60	STEEL BUSHING	94	FUNCTION KNOB ASSEMBLY
28	IMPACT BOLT	61	RUBBER WASHER	95	CYLINDER ASSEMBLY
29	O-RING 15*3	62	ALUMINUM STENTS		
30	PISTON	63	O-RING 23.5*2.5		
31	PISTON PIN	64	BEARING609-2RS		
32	PISTON PIN WASHER	65	ROTOR		
33	KNOB	66	BEARING 607-2RS		

ST20140618