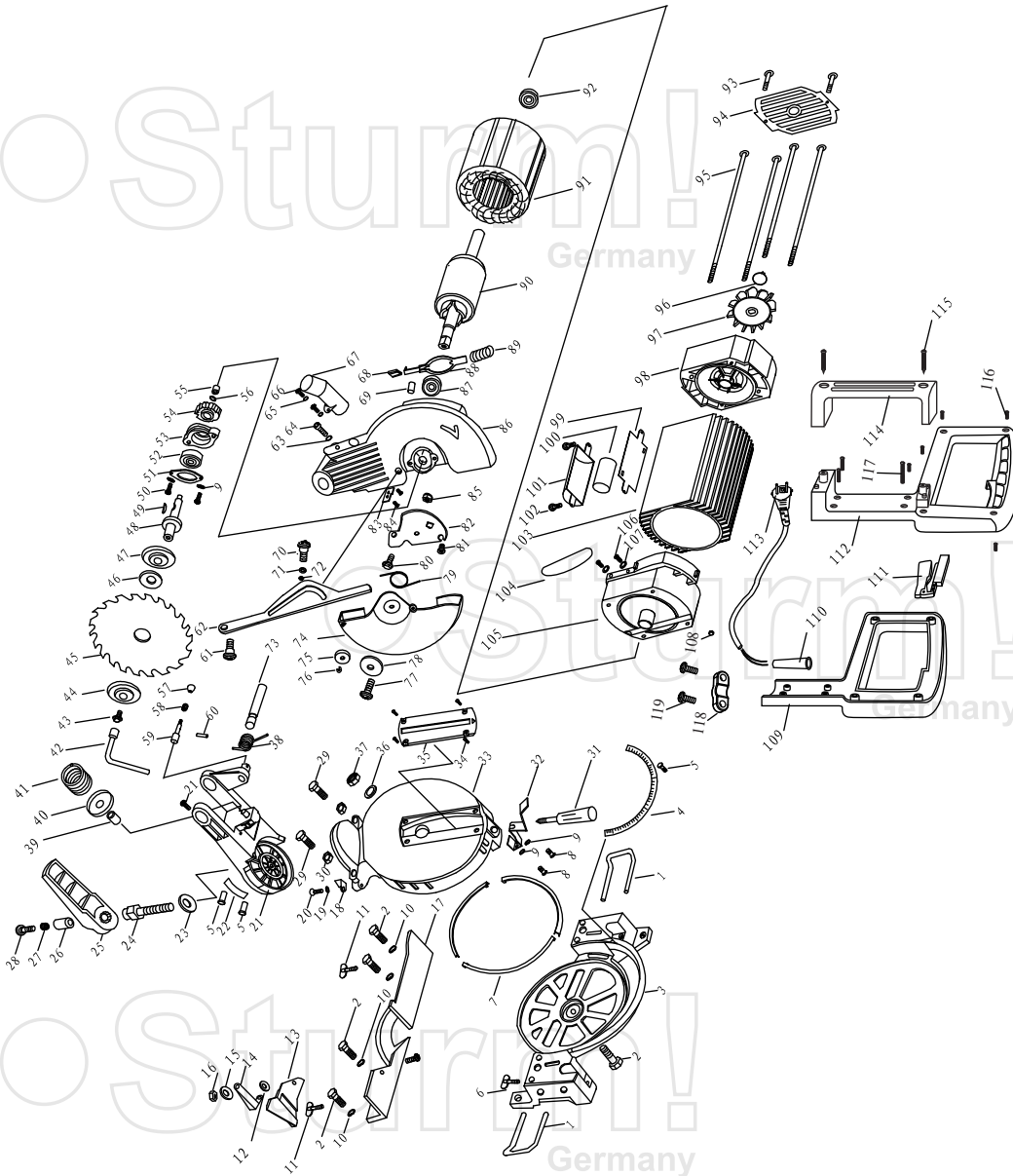


MS5525N



NO.	DESCRIPTION	NO.	DESCRIPTION	NO.	DESCRIPTION
1	SUPPORT BAR	41	SPRING	81	SPECIAL SCREW
2	BOLT	42	SOCKET WRENCH	82	SPRING PLATE
3	BASE PLATE	43	FLANGE BOLT	83	BLOCK FOR TRANSPARENT COVER
4	RULER	44	OUTER FLANGE	84	SUNK SCREW
5	RIVET	45	SAW BLADE	85	NUT
6	WING KNOB	46	LOCK RING	86	HEAD COVER
7	STEEL SHEET	47	INNER FLANGE	87	BEARING 6202
8	SCREW	48	OUTPUT SHAFT	88	LOCK BAR
9	SPRING WASHER	49	KEY	89	SPRING
10	SPRING WASHER	50	SCREW	90	ROTOR
11	WING KNOB	51	BEARING COVER	91	STATOR
12	PLAIN WASHER	52	BEARING 6203	92	BEARING 6000
13	GUIDE PLATE	53	BEARING BASE	93	SCREW
14	FIXED PLATE	54	BIG GEAR	94	REAR COVER SHEET
15	PLAIN WASHER	55	NEEDLE BEARING HK121610	95	SCREW
16	NUT	56	CIRCLIP	96	CIRCLIP
17	GUIDE BAR	57	LOCK PIN CAP	97	FAN
18	INDICATOR	58	SPRING	98	REAR COVER
19	SPRING WASHER	59	LOCK PIN	99	CAPACITOR COVER
20	SCREW	60	HOLLOW PIN	100	CAPACITOR
21	BRACKET	61	SPECIAL SCREW	101	CAPACITOR BASE
22	BEVEL CUTTING RULER	62	CONNECTION BAR	102	SCREW
23	PLAIN WASHER	63	HOLLOW RUBBER BUSH	103	MOTOR HOUSING
24	SPECIAL SCREW	64	HEX BOLT	104	RUBBER COVER
25	REAR LOCK KNOB	65	SPRING WASHER	105	FORE COVER
26	BUSH	66	SCREW	106	SCREW
27	SPRING	67	DUST COLLECTION CONNECTOR	107	SPRING WASHER
28	HEX SCREW	68	SLEEVE FOR LOCK BAR	108	NUT
29	HEX BOLT	69	RUBBER PIN	109	DOWN HANDLE
30	NUT	70	SPECIAL SCREW	110	CORD SLEEVE
31	FRONT LOCK KNOB	71	PLAIN WASHER	111	SWITCH
32	SPRING PRESS PLATE	72	PULLEY FOR CONNECTION BAR	112	UP HANDLE
33	ROTATING BASE	73	PIN FOR HEAD COVER	113	CORD & PLUG
34	SUNK SCREW	74	TRANSPARENT COVER	114	LIFT HANDLE
35	TABLE INSERT	75	PULLEY FOR TRANSPARENT COVER	115	TAPPING SCREW
36	PLAIN WASHER	76	CIRCLIP	116	SCREW
37	NUT M8	77	SCREW	117	BOLT
38	BIG TWIST SPRING	78	PLAIN WASHER	118	CORD CLAMP
39	INSERT PIN	79	TWIST SPRING	119	SCREW
40	SPRING BASE	80	BOLT		