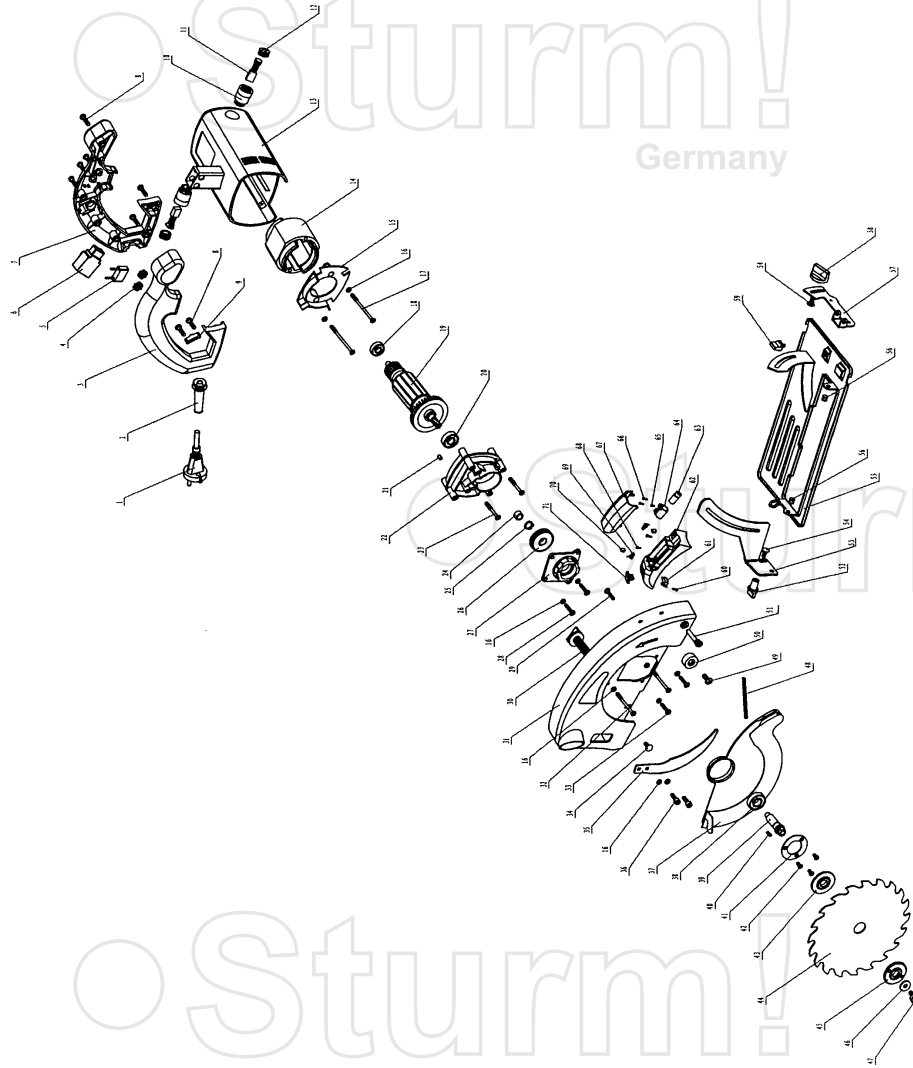


CS50185



NO.	DESCRIPTION	NO.	DESCRIPTION
1	PLUG	37	ACTIVITY PROTECTIVE GUARD
2	CORD SLEEVE	38	BEARING 6001
3	RIGHT HANDLE	39	OUTPUT SHAFT
4	INDUCTOR	40	KEY
5	CAPACITOR	41	BEARING COVER
6	SWITCH	42	SCREW M4X8
7	LEFT HANDLE	43	INNER FLANGE
8	TAPPING SCREW ST4X16	44	BLADE
9	ANCHORAGE	45	OUTER FLANGE
10	CARBON BRUSH HOLDER	46	WASHER
11	CARBON BRUSH	47	SCREW FOR BLADE
12	BRUSH COVER	48	PULL SPRING
13	ENCLOSURE	49	SCREW M6X14
14	STATOR ASSEMBLY	50	RUBBER MAT
15	WIND GUARD	51	CONNECT SCREW
16	SPRING WASHER Ø 4	52	KNOB FOR ANGLE ADJUSTMENT I
17	TAPPING SCREW ST4X65	53	DEPTH BRACKET
18	BEARING 608	54	SCREW M5X12
19	ROTOR ASSEMBLY	55	BASE PLATE
20	BEARING 6000	56	RIVET Ø6
21	RUBBER PIN	57	ANGLE BRACKET
22	CENTER BRACKET	58	KNOB FOR ANGLE ADJUSTMENT II
23	TAPPING SCREW ST4X35	59	SCREW FOR TIGHT GUIDE RULER
24	BUSH	60	TAPPING SCREW ST3X6
25	CIRCLIP Ø12	61	LASER SWITCH
26	GEAR	62	LASER BOX
27	BEARING BASE	63	LASER HEAD
28	SCREW M4X12	64	LASER FIXING BASE
29	SCREW M3X16	65	SCREW M3X6
30	KNOB OF DEPTH	66	TAPPING SCREW ST3X14
31	ALUMINUM COVER	67	COVER OF LASER BOX
32	TAPPING SCREW ST4X53	68	SCREW M3X10
33	SCREW M4X16	69	SPRING OF LASER
34	SCREW M6X20	70	COPPER CONNECT PIECE
35	RIVING KNIFE	71	SLIDE BUTTON OF LASER SWITCH
36	INNER HEXAGON SCREW M5X12		

RU5110701