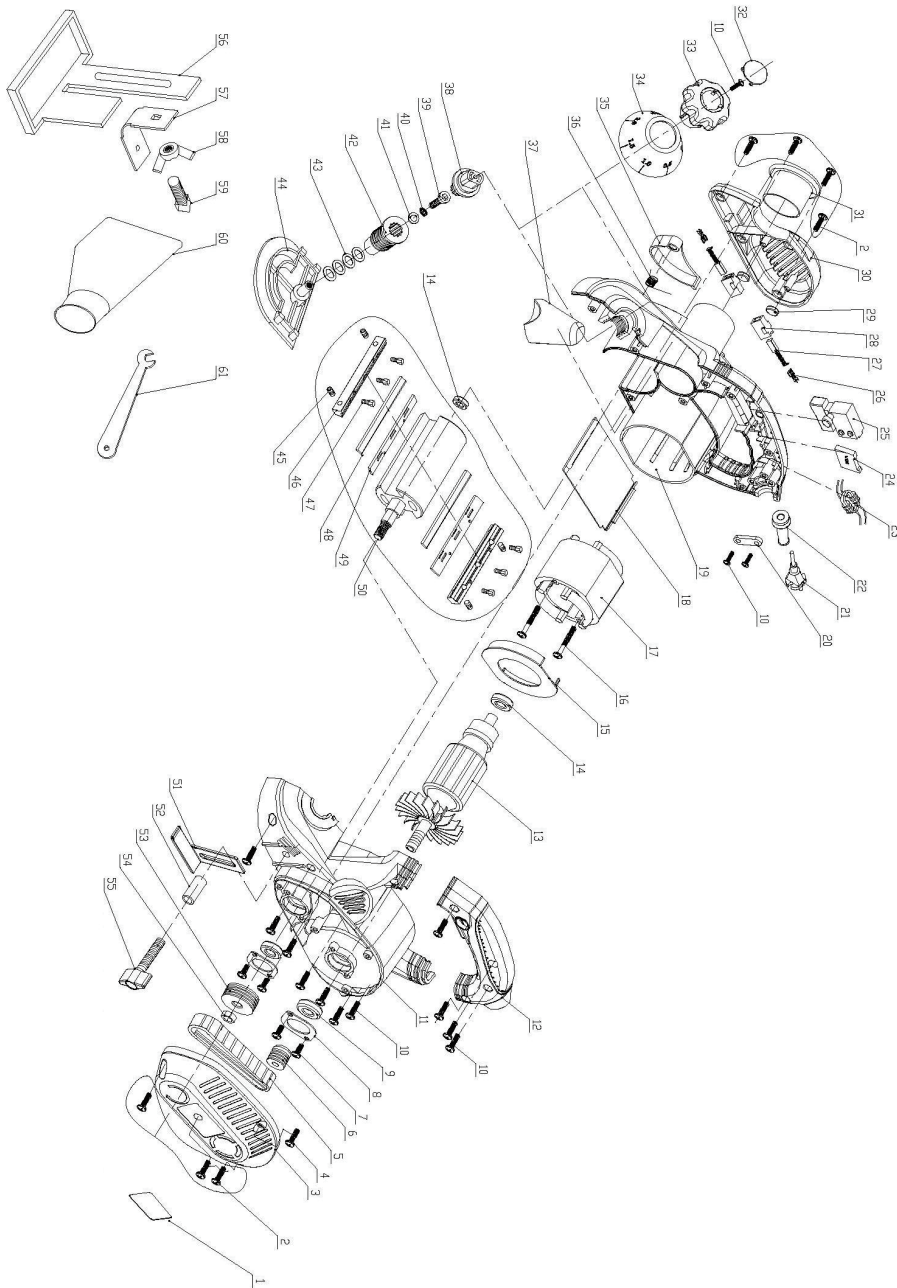


P1090



NO.	DESCRIPTION	NO.	DESCRIPTION
1	Nameplate	32	Front handle cover
2	Screw ST4.2×14	33	Front handle
3	Belt Cover	34	Dial disc
4	Screw ST4.2×12	35	Safty plate
5	Belt	36	Spring
6	Small belt wheel	37	Nameplate
7	Screw ST4.2*12	38	Bolt
8	Bearing 608 cover	39	Screw M6×10
9	Bearing 608	40	Washerφ6×φ9×2
10	Screw ST4.2*16	41	Washer φ6×φ11×1
11	Left motor housing	42	Bolt
12	Hand cover	43	Washer φ6×8
13	Armature	44	Front base
14	Bearing 626	45	Screw pin
15	Baffle circle	46	Adjust plate
16	Screw ST4.2*55	47	Screw M5
17	Stator	48	Balde
18	Rear bottom plate	49	Drum plate
19	Right motor housing	50	Blade pulley
20	Cable pressure board	51	Depth Rule
21	Cable	52	Metal Pipe
22	Cable sleeve	53	Big belt wheel
23	Capacitor	54	Screw M8
24	Inductance	55	Snap Knob
25	Switch	56	Guide rule
26	Slice	57	Extension guide set
27	Carbon Brushes	58	Nut
28	Brushes holder	59	bolt
29	Brushes holder shoe	60	Dust bag
30	Side cover	61	Wrench
31	Dust control		