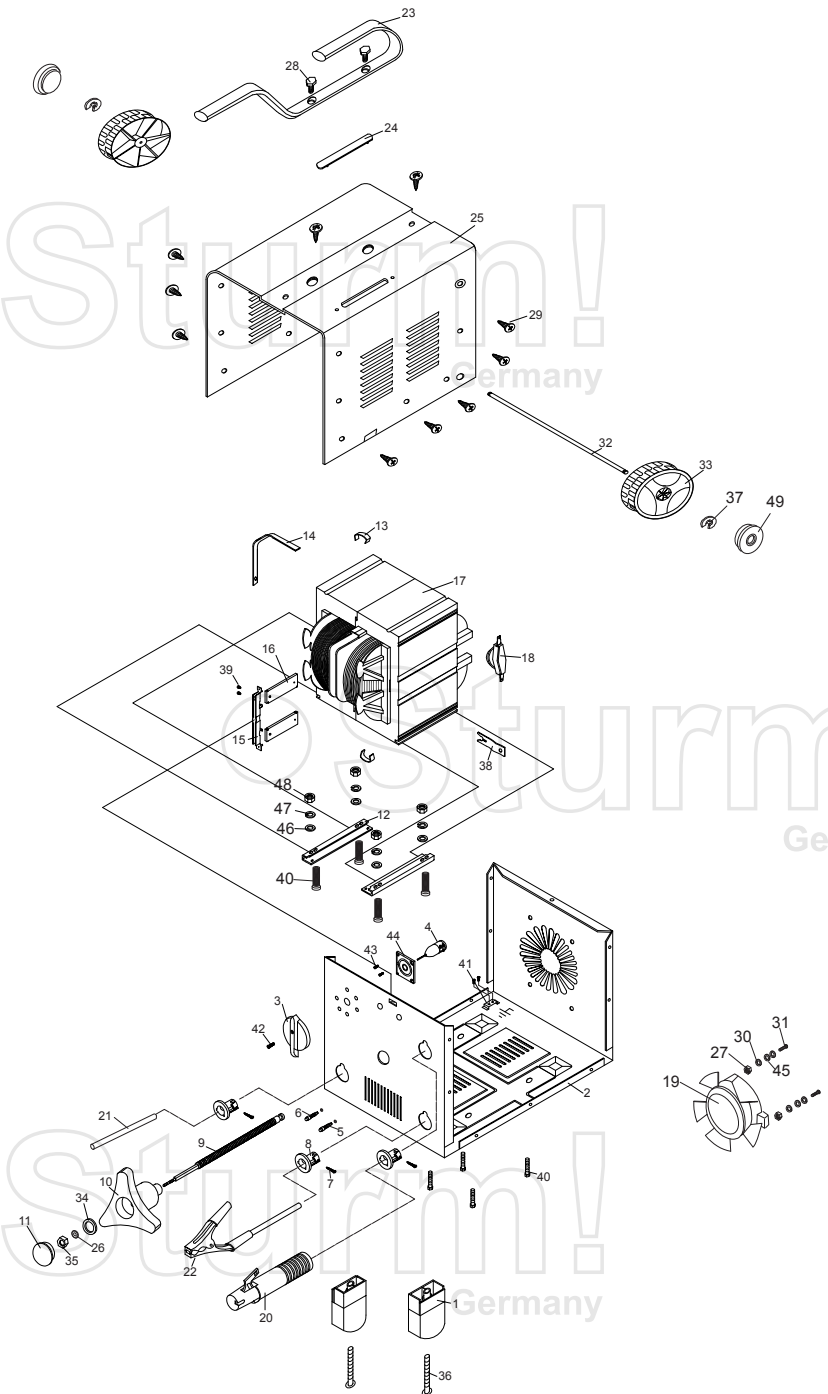


AW79250



NO.	DESCRIPTION	NO.	DESCRIPTION
1	BASE FOOT	26	SPRING WASHER
2	HOUSING	27	NUT
3	VOLTAGE SELECTION KNOB	28	BOLT
4	VOLTAGE SELECTION SWITCH	29	TAPPING SCREW
5	THERMAL CUT-OUT INDICATOR	30	SPRING WASHER
6	POWER INDICATOR	31	BOLT
7	TAPPING SCREW	32	WHEEL AXES
8	ANCHORAGE	33	IDLER WHEEL
9	THREAD BAR	34	PLAIN WASHER
10	CURRENT ADJUSTED KNOB	35	NUT
11	KNOB COVER	36	BOLT
12	TRANSFORMER BRACKET	37	CIRCLIP
13	CLAMP	38	CLAMP SHEET
14	CURRENT INDEX	39	BOLT
15	CURRENT ADJUSTED BRACKET	40	BOLT
16	CURRENT ADJUSTMENT	41	BOLT
17	MAIN TRANSFORMER	42	SCREW
18	THERMAL CUT- OUT	43	SCREW
19	FAN	44	FIXED BOARD
20	WELDING ROD CLAMPER	45	PLAIN WASHER
21	CORD & PLUG	46	PLAIN WASHER
22	EARTHING CLAMPER	47	SPRING WASHER
23	HANDLE	48	NUT
24	ORGANIC GLASS WINDOW	49	NUT
25	HOUSING COVER		

RU6031602