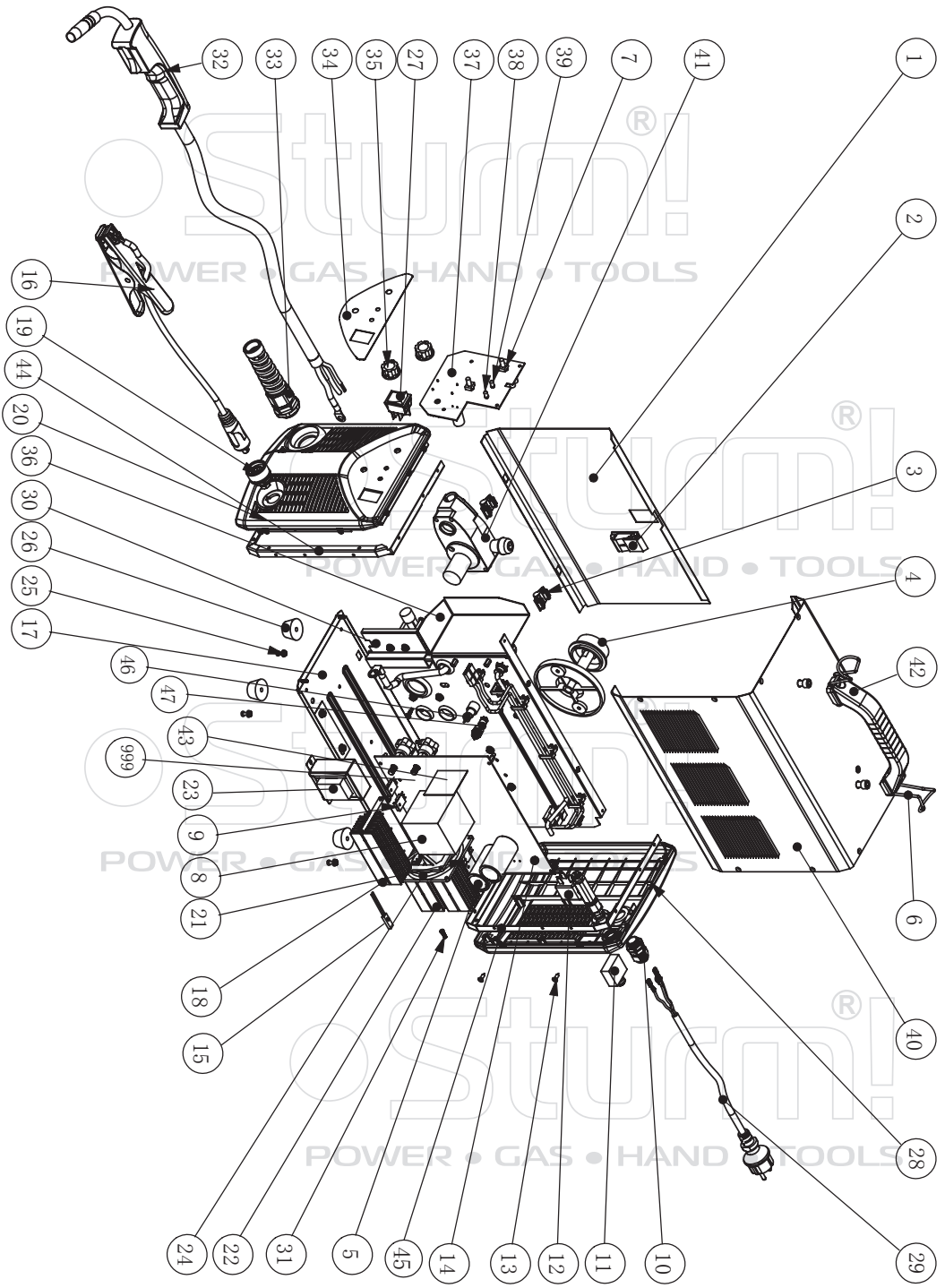
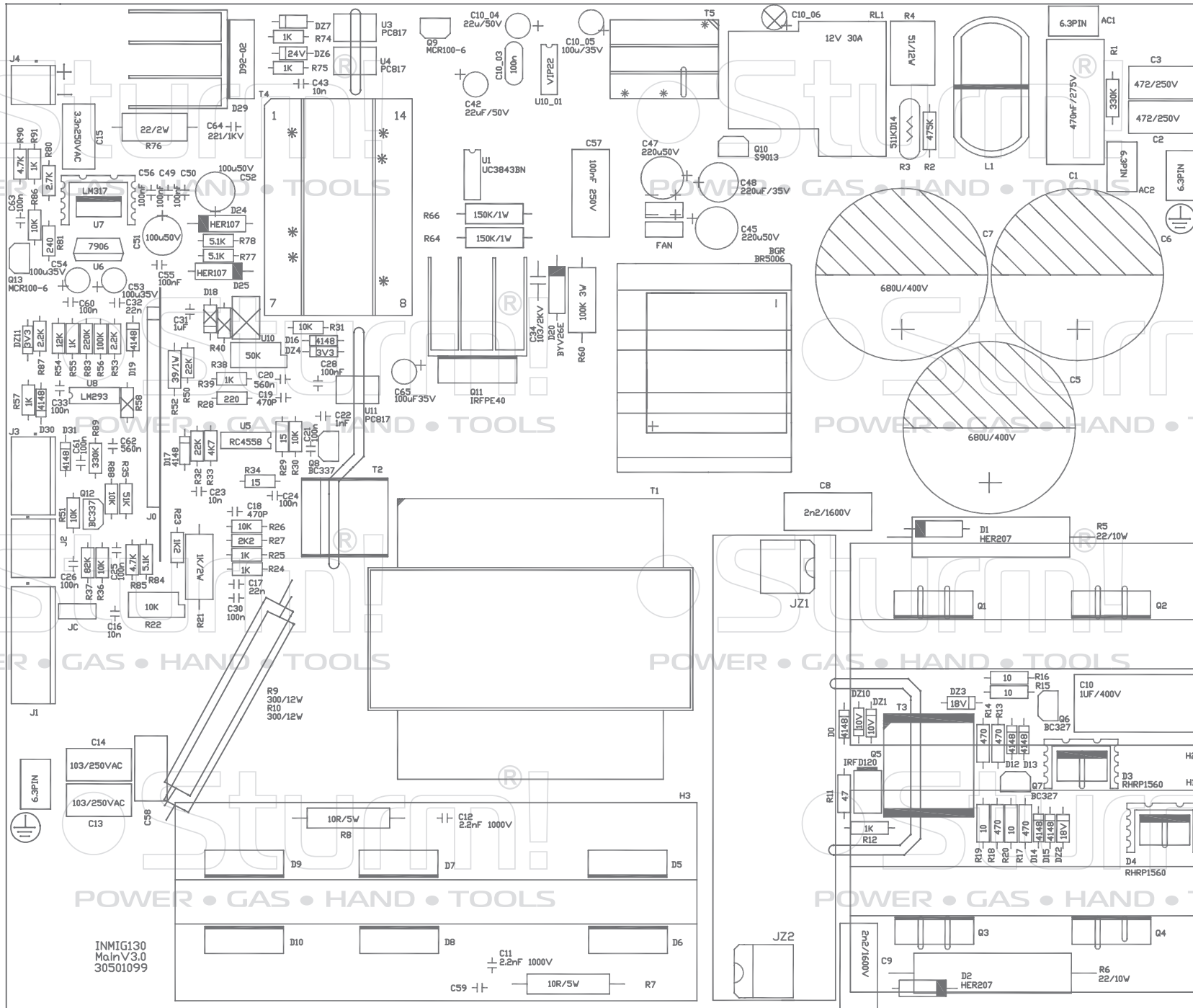


AW97PA14 AW97PA17



NO	DESCRIPTION
1	SMALL-TOP STEEL COVER
2	LATCH
3	PLASTIC HINGE
4	SPOOL
5	CAPACITOR
6	POTHOOK
7	POTENTIOMETER
8	TRANSFORMER
9	FAST RECOVERY DIODE(FRD)
10	CABLE CLIP
11	CIRCUIT BREAKER
12	ELECTROMAGNETISM VALVE
13	4×14 TAPPING SCREW
14	MAIN PCB
15	TEMPERATURE CONTROLLER
16	EARTH CLAMP
17	BOTTOM STEEL COVER
18	HEAT SINK FOR FRD
19	QUICK CONNECTOR
20	FRONT COVER
21	IGBT
22	HEAT SINK FOR IGBT
23	INDUCTANCE
24	FAN
25	4×12 SCREW & M4 NUT
26	RUBBER FOOT
27	SWITCH
28	BACK COVER
29	MAIN CABLE
30	MIDDLE STEEL COVER
31	TAPPING SCREW
32	WELDING TORCH
33	CONNECTOR
34	LABEL
35	POTENTIOMETER BOTTOM
36	SURROUND STEEL COVER
37	WIRE FEEDER PCB
38	THERMAL PROTECTION LLED
39	POWER LED
40	BIG-TOP STEEL COVER
41	WIRE FEEDER
42	HANDLE
43	CONTROL PCB
44	SUPPORT FOR FRONT PLASTIC COVER
45	SUPPORT FOR BACK PLASTIC COVER
46	FUSE
47	AVIATION PLUGS
999	MAIN BOARD ASSEMBLY(5+8+9+14+15+18+21+22+24+43)

The main board front for AW97PA17



The main board back for AW97PA17

