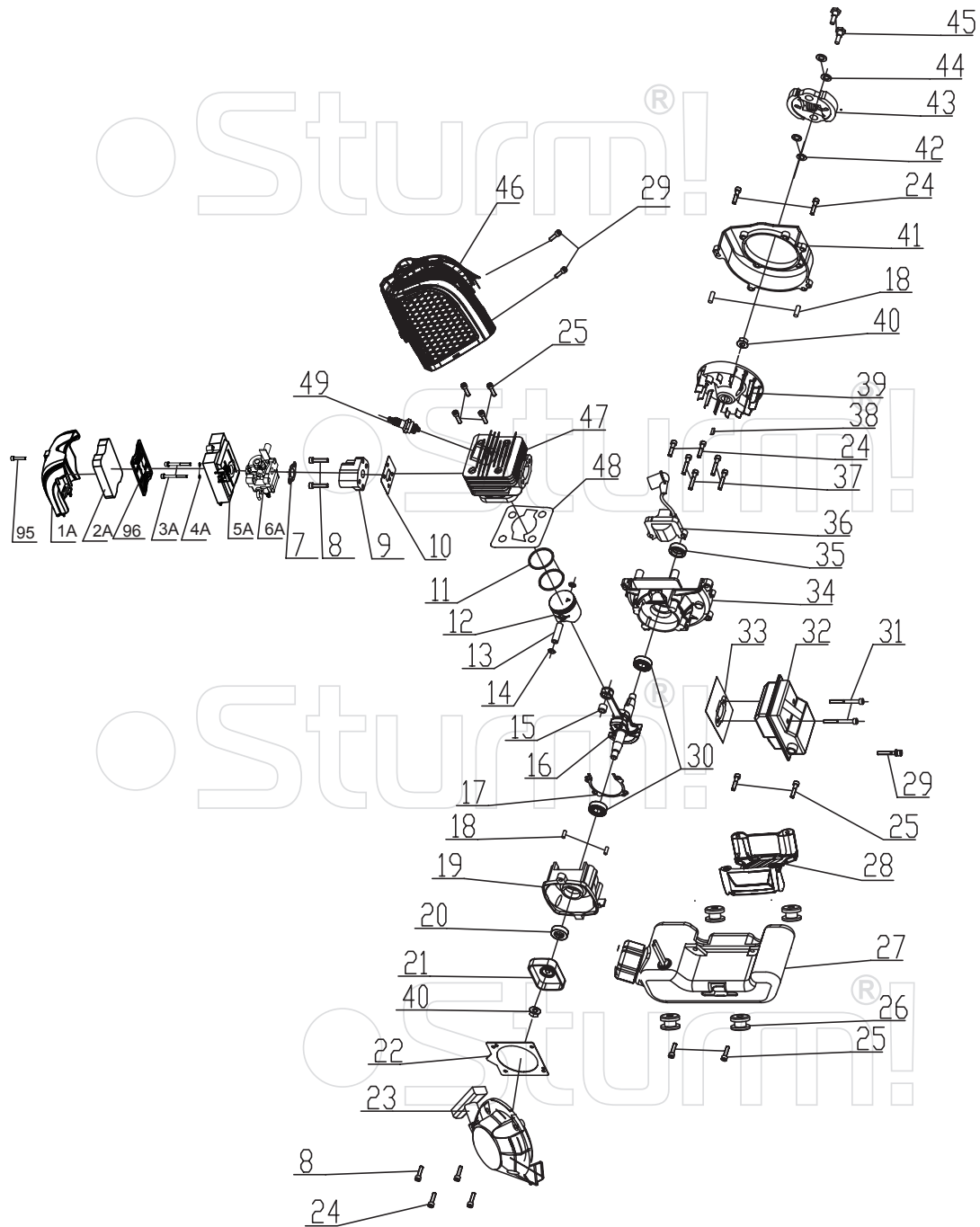


## BT8962D/BT8972D

NO.	DESCRIPTION	NO.	DESCRIPTION
8	BOLT	65	HARD SHAFT
24	BOLT	66	ALU. ROD
25	BOLT	67	BLADE ON GUARD
29	SCREW	68	GUARD
50	CLUTCH ENCLOSURE	69	NUT
51	CIRCLIP FOR HOLE	70	GUARD HOLDER
52	BEARING 6202 RS	71	GALLUS HOLDER CLAMP
53	CIRCLIP FOR SHAFT	72	GALLUS HOLDER
54	CONNECTOR BASE	73	NUT
55	BOLT	74	CIRCLIP FOR HOLE
56	SHEATH	75	CIRCLIP FOR SHAFT
57	CLAMP	76	BEARING 6000RS
58	OIL BEARING	77	GEAR
59	CLAMP(LOWER)	78	GEAR BOX
60	CLAMP CORE	79	BUTTER NUZZLE
61	CLAMP(UPPER)	80	BEARING 6000RS
62	LEFT HANDLE ALU. TUBE	81	GEAR
63A	CONTROLLER HANDLE	82	CLAMP BUSH
63A-1	SCREW ST2.9X13	83	OUTPUT SHAFT
63A-2	BUTTON	84	BEARING 6002RS
63A-3	SPRING	85	CIRCLIP FOR HOLE
63A-4	CLOCK PIN	86	BLADE FIXED BOARD
63A-5	HANDGRIP	87	BLADE CLAMP BOARD
63A-6	SPRING	88	BLADE GUARD CAP
63A-7	BOX,RIGHT	89	NUT
63A-8	SCREW ST2.9X18	90	BLADE
63A-9	SCREW M5X30	91	GRASS TRIMMER HEAD
63A-10	CABLE COMP.	92	WASHER
63A-11	TUBE	93	BOLT
63A-12	STOP BUTTON COMP.	94	BLADE 40TEETH
63A-13	HANDGRIP	97	RIGHT HANDLE ALU. TUBE
63A-14	SPRING	101	ROD WITH SHAFT ASSEMBLY
63A-15	BOX,LEFT	102	GEAR BOX ASSEMBLY
63A-16	NUT	103	CONNECTOR ASSEMBLY
64	LEFT HANDLE		

ST20131231-01

Sturm!



## ENGINE FOR BT8962D/BT8972D

NO.	DESCRIPTION	NO.	DESCRIPTION
1A	AIR FILTER COVER	27	FUEL TANK
2A	AIR FILTER SPONGE	28	FUEL TANK BRACKET
3A	BOLT	29	SCREW
4A	SPRING WASHER	30	BEARING 6202
5A	AIR FILTER BASE	31	SCREW
6A	CARBURETOR	32	MUFFLER
7	SEALING GASKET	33	SEALING
8	BOLT	34	CASE(UPPER)
9	AIR SUCTION PIPE	35	SEALING
10	SEALING GASKET	36	IGNITION COIL
11	PISTON RING	37	BOLT
12	PISTON	38	WOODRUFF KEY
13	PISTON PIN	39	FLYWHEEL
14	CIRCLIP	40	NUT WITH FLANGE
15	NEEDLE BEARING	41	FLYWHEEL CASE COVER
16	CRANK SHAFT ASSEMBLY	42	WASHER
17	SEALING GASKET	43	CLUTCH ASSEMBLY
18	PIN	44	WASHER
19	CASE (LOWER)	45	BOLT
20	SEALING	46	CYLINDER COVER
21	STARTER PULLY ASSEMBLY	47	CYLINDER
22	WASHER	48	SEALING
23	STARTER ASSEMBLY	49	SPARK PLUG
24	BOLT	95	BOLT
25	BOLT	96	AIR FILTER NET
26	DAMPING RUBBER		

ST20131231-01