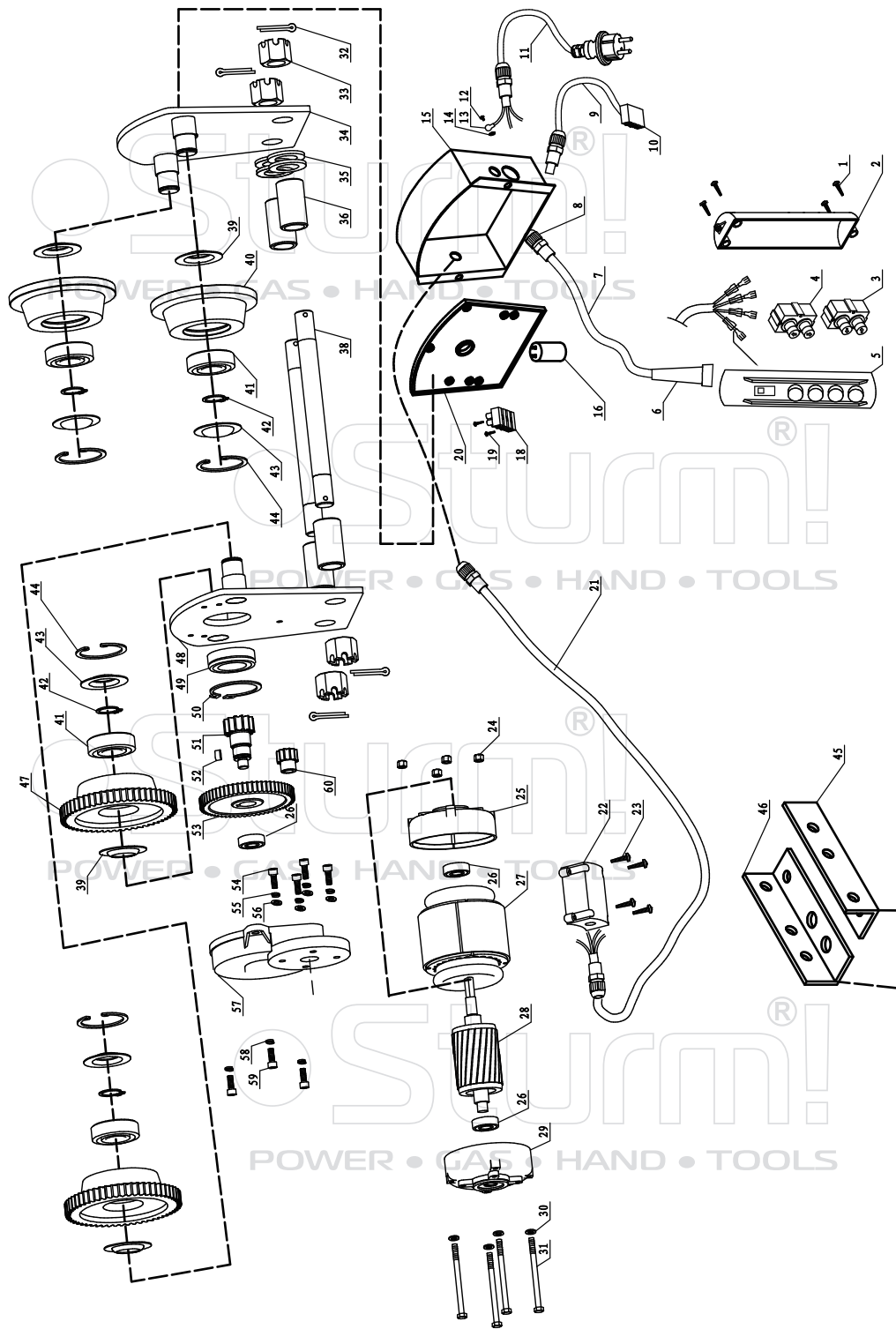


ELECTRIC HOIST OF EH72121

NO.	DESCRIPTION	NO.	DESCRIPTION
1	OUTER HEX BOLT	47	CROSS PAN HEAD SCREW
2	SPRING WASHER	48	OUTER HEX BOLT
3	WASHER	49	ANTI-KINK DEVICE OF CABLE LINE
4	OUTER HEX BOLT	50	CABLE LINE
5	WASHER	51	PLUG-IN REED JACKET
6	SPRING WASHER	52	PLUG-IN REED
7	FASTEN CLAMP	65	CONNECTION ENDING
8	HOUSING COVER	66	CROSS PAN HEAD TAPPING SCREW
9	ROLLING BEARING6204	67	GUIDING LINE
10	ROPE PIN	68	PLUG-IN REED
11	ROPE DRUM	69	LOWER AIRPROOF LOOP OF JUNCTION BOX
12	STEEL WIRE ROPE	70	LOWER COVER OF JUNCTION BOX
13	BALANCE WEIGHT	71	CROSS PAN HEAD SCREW
14	BUFFERING SPRING	72	MIDDLE AIRPROOF LOOP OF JUNCTION BOX
15	ALUMINUM BUCKLE	73	MIDDLE COVER OF JUNCTION BOX
16	PROTECTIVE LOOP FOR STEEL WIRE ROPE	74	CROSS PAN HEAD TAPPING SCREW
17	HOOK	75	POSITION LIMITED SWITCH
18	POSITION LIMITED BRACKET	76	SNAP RING
19	SOCKET SCREW	77	BUTTON SPRING LOOP
20	SOCKET SHAFT FOR ROPE DRUM	78	POSITION LIMITED BUTTON
21	FLAT KEY	79	TIE-IN OF POSITION LIMITED SWITCH
22	FLAT KEY	80	REED OF POSITION LIMITED SWITCH
23	ROLLING BEARING6205	81	CAPACITOR
24	SOCKET SCREW	82	UP AIRPROOF LOOP OF JUNCTION BOX
25	SPRING WASHER	83	UP COVER OF JUNCTION BOX
26	WASHER	84	LOCKNUT
27	GEAR BOX	85	FLAT WASHER
28	SMALL GEAR	86	LOCKNUT
29	SNAP RING	87	FLAT WASHER
30	PAPER WAHSER	88	PULLEY PLYWOOD
31	ROLLING BEARING	89	PULLEY WASHER
32	GEAR DRIVING SHAFT	90	PULLEY
33	FLAT KEY	91	PULLEY SHAFT
34	BIG HELICAL GEAR	92	COLUMN NUT
35	ROLLING BEARING6203	93	OUTER HEX BOLT
36	FRONT HOUSING COVER	94	CABLE LINE
37	ROTOR	95	RING
38	STATOR	96	PLATE
39	MOTOR HOUSING	97	FIXING PLATE
40	BRAKE SPRING	98	LOWER COVER OF DOWN LIMIT POSITION BOX
41	BRAKE ASSEMBLY	99	SEAL RING
42	ROLLING BEARING6203	100	UP COVER OF DOWN LIMIT POSITION BOX
43	BACK HOUSING COVER	101	PIN
44	FAN	102	DOWN LIMITED POSITION POLE
45	FAN COVER	103	SPRING
46	FLAT WASHER	104	CAPACITOR



ELECTRIC TROLLEY OF EH72121

NO.	DESCRIPTION	NO.	DESCRIPTION
1	SCREW M4X16	32	SPLIT PIN 3.2X40
2	THE RIGHT COVER OF CONTROL BOX	33	SPLIT SCREW M18X15
3	LEFT AND RIGHT SWITCH	34	SURPORT BOARD
4	UP AND DOWN SWITCH	35	GASKET
5	THE LEFT COVER OF CONTROL BOX	36	BUSH
6	CABLE SLEEVE	38	DOUBLE-HEAD SCEW
7	CONTROL CABLE	39	BEARING COVER
8	CABLE CLAMP	40	RUN WHEEL
9	CABLE	41	BEARING 6204
10	PLUG	42	CIRCLIP Φ 20
11	POWER CABLE	43	BEARING COVER
12	SCREW M4X8	44	CIRCLIP FOR HOLE Φ 47
13	GROUND GASKET	45	LEFT ANGLE IRON
14	GASKET	46	RIGHT ANGLE IRON
15	CONNECT BOX	47	GEAR
16	CAPACITOR 1	48	SURPORT BOARD
18	TERMINAL BLOCK	49	BEARING 6204
19	SCREW	50	CIRCLIP FOR SHAFT Φ 47
20	RUBBER WASHER	51	GEAR
21	CABLE	52	KEY
22	CABLE BOX	53	BIG GEAR
23	SCREW	54	SCREW M5X14
24	NUT M4	55	SPRING GASKET
25	THE FRONT COVER OF MOTOR	56	GASKET
26	BEARING 6200	57	GEAR BOX
27	STATOR	58	SPRING GASKET
28	ROTOR	59	SCREW M6X14
29	REAR COVER	60	PINION
30	GASKET		
31	SCREW M4X10		

ST20130621

POWER • GAS • HAND • TOOLS

Sturm!

POWER • GAS • HAND • TOOLS