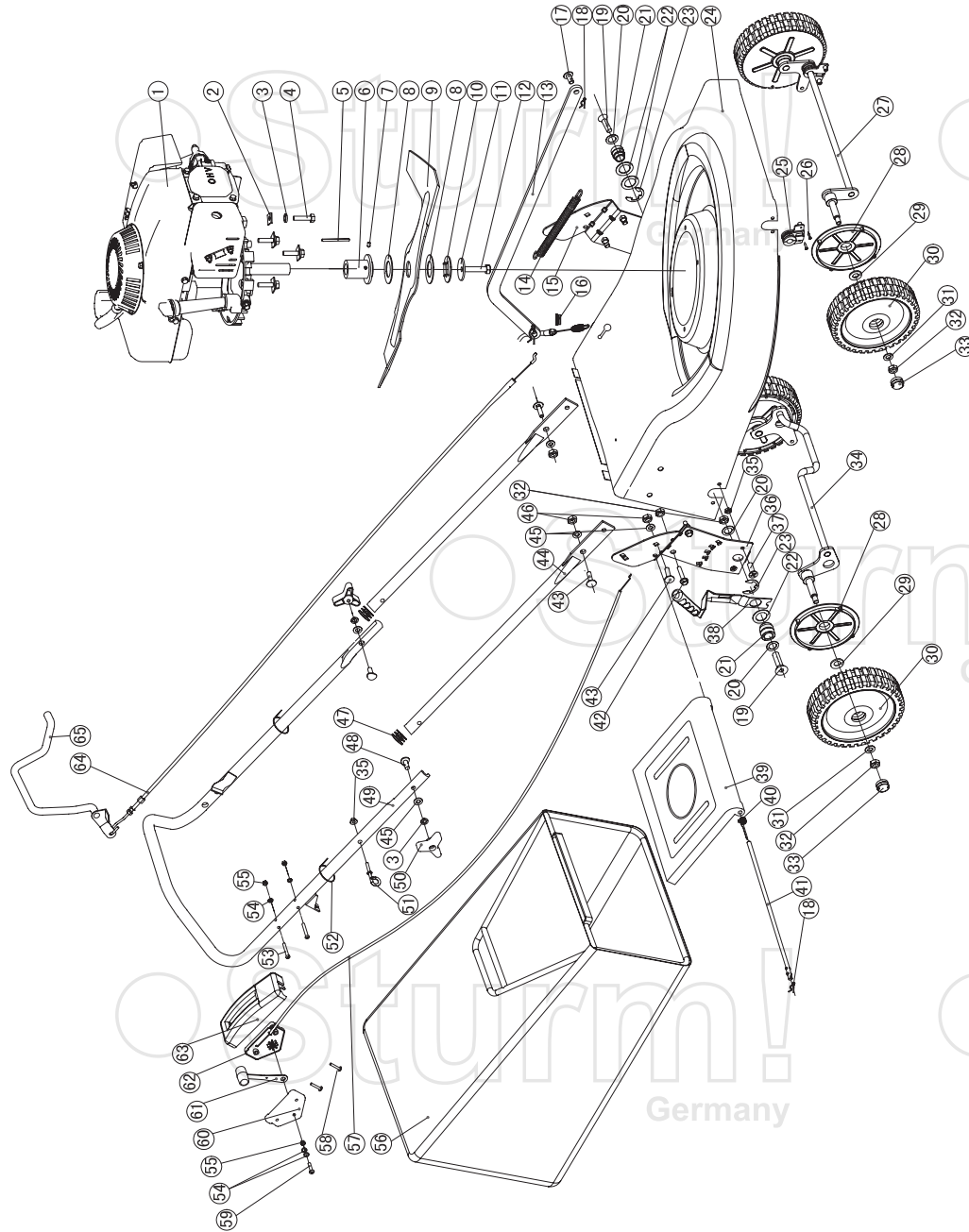


BLM8645



NO.	DESCRIPTION	NO.	DESCRIPTION
1	ENGINE	34	BACK AXLE MODULE
2	SECTOR GASKET	35	NUT M6
3	SPRING WASHAR	36	RIGHT SUPPORT OF OPREATING GRIP
4	BOLT M8X30	37	BOLT M6X16
5	CALM KEY	38	COMPANIONWAY
6	SHAFT COUPLING	39	CUP OF STRAW-COLLECTING BOX
7	SCREWS WITH CUP POINT	40	LEFT TORSION SPRING
8	BAKELITE GASKET	41	STRAW COLLECTING BOX CAPPING GRIP
9	BLADE	42	BOLT M10X20
10	∏ SHAPED GASKET	43	BOLT M8X16
11	SADDLE SHAPED GASKET	44	GRIP SUPPOR
12	BOLT 3/8-24UNF	45	PLAIN WASHER
13	LINK ROD	46	NUT M8
14	LINK ROD TENSION SPRING	47	LATEX BUILD UP
15	LEFT SUPPORT OF OPERATING GRIP	48	OUTER ARCH BOLT
16	LATEX BUILD UP	49	HAND GRIP
17	LINK ROD BOLT	50	HAND WHEEL
18	GIVE DOWEL	51	CORD HOOK
19	BOLT M10X40	52	LINE CLIP
20	GASKET 13X36X1.5	53	SCREW M5X40
21	BACK AXLE BUSH	54	PLAIN WASHER
22	GASKET Ø22.2X36X1.5	55	NUT M5
23	HATCH FILES	56	STRAW COLLECTING SACK
24	ENGINE SUPPORT	57	THROTTLE WIRE MODULE
25	RUBBER BUSH	58	SELF-THREADING SCREW ST3.5X30-C-H
26	SCREW M4X12	59	SCREW M5X25
27	FORE AXLE MODULE	60	SPEED CONTROL RIGHT-PLATE
28	FORE AXLE CUP	61	SPEED CONTROL GRIP
29	GASKET Ø 3X36X2.5	62	SPEED CONTROL LEFT-PLATE
30	WHEEL	63	SPEED CONTROL CAPPING PLATE
31	WHEEL GASKET	64	BRAKE WIRE MODULE
32	NUT M10	65	BLADE CONTROL LEVER
33	WHEEL COVER		

RU70117-1