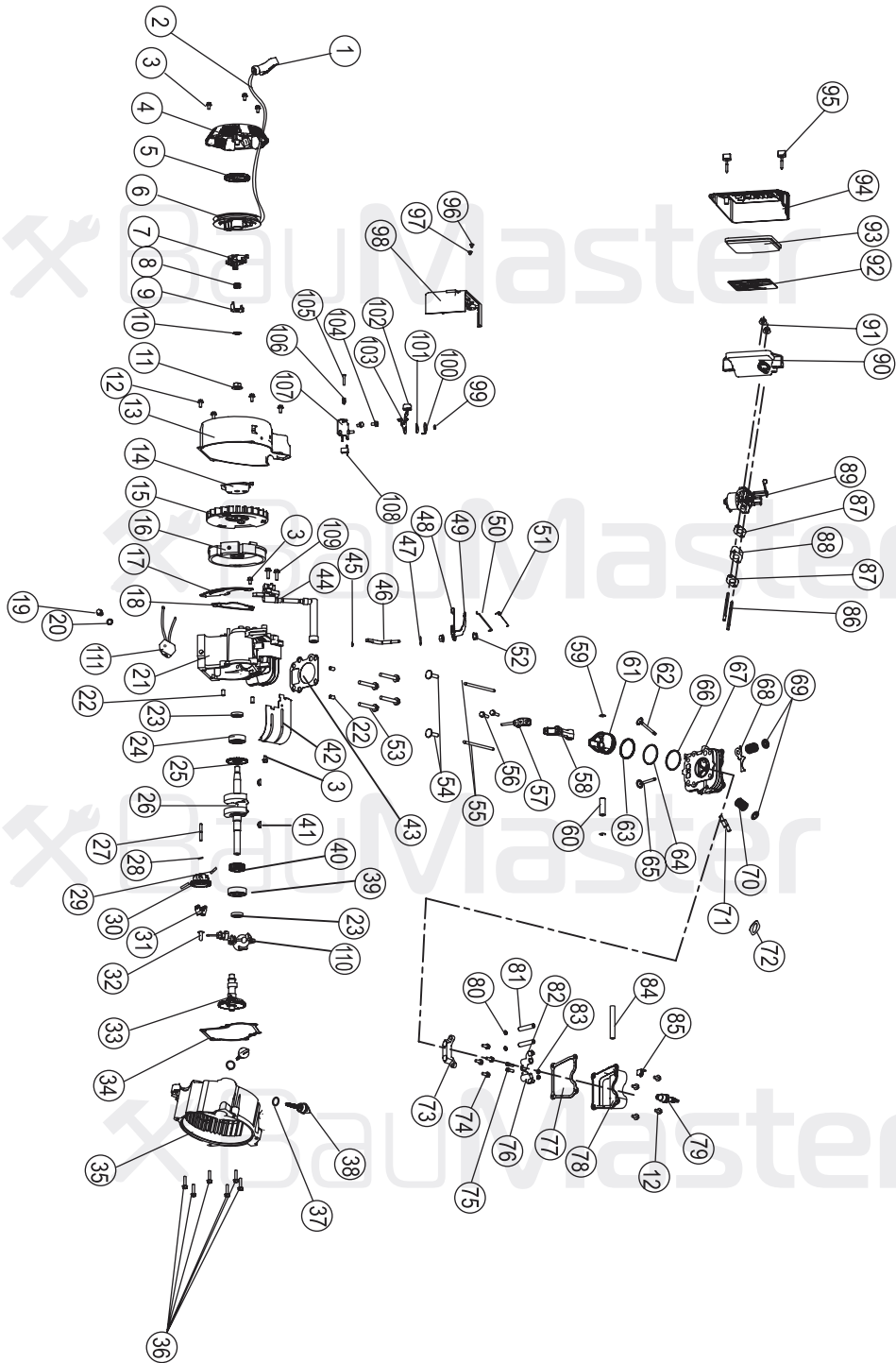


PG-8715X

NO.	DESCRIPTION	NO.	DESCRIPTION
1	EARTH BOLT	27	FUEL COCK
2	SPRING WASHER	28	FUEL METER
3	FLAT WASHER	29	FUEL FILTER
4	NUT M6	30	FUEL TANK CAP
5	CONTROL PANEL	31	BOLT M6X20
6	ENGINE SWITCH	32	VIBRATION ABSORBER WASHER
7	BOLT M6X12	33	CLIP
8	DC SOCKET	34	FUEL HOSE
9	DC CIRCUIT BREAKER	35	FUEL TANK
10	AC CIRCUIT BREAKER	36	FRAME
11	AC SOCKET	37	ALTERNATOR FRONT FRAME
12	VOLTAGE METER	38	BOLT M8X20
13	CONDENSER	39	ROTOR ASSEMBLY
14	CONTROL PANEL COVER	40	STATOR COVER
15	WIRE BIND	41	STATOR ASSEMBLY
16	VIBRATION ABSORBER	42	ALTERNATOR CENTER SCREW
17	NUT M8	43	MUFFLER SUPPORT
18	BOLT M8X12	44	SCREW M6X90
19	FRAME RUBBER	45	SCREW M5X12
20	VIBRATION ABSORBER (1)	46	NUT
21	VIBRATION ABSORBER (2)	47	FLAT WASHER
22	ENGINE	48	ALTERNATOR REAR COVER
23	EXHAUST BOLT	49	BOLT M5X20
24	EXHAUST GASKET	50	DIODE ASSY
25	MUFFLER	51	REAR FRAME
26	NUT M8		



Engine for PG-8715X

No.	DESCRIPTION	No.	DESCRIPTION	No.	DESCRIPTION
1	ROPE HANDLE	43	CYLINDER GASKET	85	BAFFLE
2	ROPE	44	T.C.I	86	INTAKE BOLT
3	SCREW M6X10	45	CIRCLIP	87	CARBURETOR GASKET
4	STARTER CASE	46	GOVERNING SHAFT	88	CARBURETOR CONNECTOR
5	SPIRAL SPRING	47	CLIP	89	CARBURETOR
6	DRUM SHEAVE	48	GOVERNING SPRING	90	AIR CLEANER BASE
7	DRIVING PAWL	49	GOVERNING LEVER	91	NUT M6
8	SPRING	50	CARBURETOR CONNECTING ROD	92	ELEMENT SEAT
9	DRIVING PAWL	51	CARBURETOR SPRING	93	AIR CLEANER ELEMENT
10	LOCK WASHAR	52	NUT M6	94	AIR CLEANER COVER
11	FLYWHEEL NUT	53	SCREW M8X55	95	COVER SCREW
12	BOLT M6X12	54	VALVE LIFTER	96	SCREW M3.2X13
13	FAN CASE	55	PUSH ROD	97	SCREW M4X8
14	STARTER BUSH	56	CONNECTING ROD SCREW M6X28	98	CONTROL PANEL
15	FAN	57	CONNECTING ROD CAP	99	NUT M6
16	FLYWHEEL	58	CONNECTING ROD BODY	100	PRESS PLATE
17	AIR SHROUD	59	PISTON PIN CIRCLIP	101	WASHER
18	AIR SHROUD	60	PISTON PIN	102	CAP OF GOVERNING LEVER
19	DRAIN PLUG	61	POSTON	103	THROTTLE CONTROL LEVER
20	DRAIN PLUG SEAL	62	EXHAUST VALVE	104	BOLT M6X8
21	CRANKCASE	63	THIRD PISTON RING	105	SCREW M5X30
22	DOWEL PIN	64	SECOND PISTON RING	106	SPRING
23	OIL SEAL	65	INTAKE VALVE	107	GOVERNING RACK
24	BALL BEARING 6203	66	FRIST PISTON RING	108	ENGINE SWITCH
25	GOVERNING DRIVING GEAR	67	CYLINDER HEAD ASSEMBLY	109	BOLT M6X20
26	CRANKSHAFT	68	OIL CHANNEL COVER	110	OIL LEVEL SENSOR
27	GOVERNING GEAR SHAFT	69	VALVE RETAINER	111	DIODE COMP
28	WASHER	70	VALVE SPRING		
29	FLYWRIGHT PIN	71	EXHAUST BOLT		
30	GOVERNING GEAR	72	EXHAUST GASKET		
31	FLYWRIGHT	73	ROCKER ARM SEAT		
32	COLLAR	74	SCREW M6X20		
33	CAMSHAFT ASSEMBLY	75	VALVE CLEARANCE ADJUSTING BOLT		
34	CRANKCASE GASKET	76	ROCKER ARM (B)		
35	CRANKCASE COVER	77	HEAD COVER GASKET		
36	SCREW M6X25	78	CYLINDER HEAD COVER ASSEMBLY		
37	OIL GAUGE SEAL	79	SPARK PLUG		
38	OIL GAUGE	80	CIRCLIP		
39	BALL BEARING 6303	81	ROCKER ARM SHAFT		
40	TIMING GEAR	82	ROCKER ARM(A)		
41	KEY 5.0 6.5 16	83	VALVLE CLEARANCE ADJUSTING NUT		
42	AIR SHROUD	84	TUBE		

BM20100723