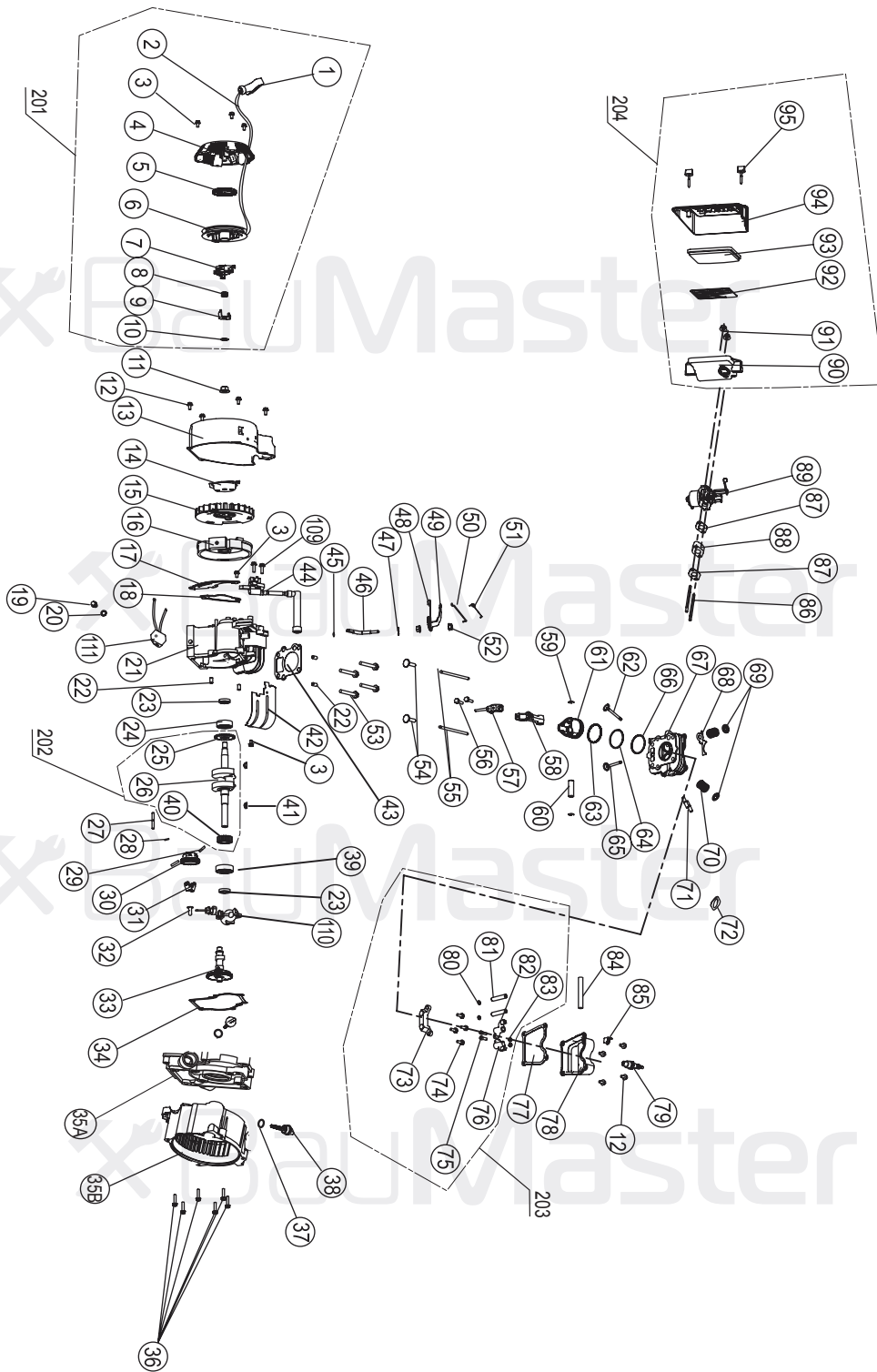


## PG-8715X

NO.	DESCRIPTION	NO.	DESCRIPTION
1	EARTH BOLT	27	FUEL COCK
2	SPRING WASHER	28	FUEL METER
3	FLAT WASHER	29	FUEL FILTER
4	NUT M6	30	FUEL TANK CAP
5	CONTROL PANEL	31	BOLT M6X20
6	ENGINE SWITCH	32	VIBRATION ABSORBER WASHER
7	BOLT M6X12	33	CLIP
8	DC SOCKET	34	FUEL HOSE
9	DC CIRCUIT BREAKER	35	FUEL TANK
10	AC CIRCUIT BREAKER	36	FRAME
11	AC SOCKET	37	ALTERNATOR FRONT FRAME
12	VOLTAGE METER	38	BOLT M8X20
13	CONDENSER	39	ROTOR ASSEMBLY
14	CONTROL PANEL COVER	40	STATOR COVER
15	WIRE BIND	41	STATOR ASSEMBLY
16	VIBRATION ABSORBER	42	ALTERNATOR CENTER SCREW
17	NUT M8	43	MUFFLER SUPPORT
18	BOLT M8X16	44	SCREW M6X85
19	FRAME RUBBER	45	SCREW M5X12
20	VIBRATION ABSORBER (1)	46	NUT
21	VIBRATION ABSORBER (2)	47	FLAT WASHER
22	ENGINE	48	ALTERNATOR REAR COVER
23	EXHAUST BOLT	49	BOLT M5X20
24	EXHAUST GASKET	50	DIODE ASSY
25	MUFFLER	51	REAR FRAME
26	NUT M8		



## Engine for PG-8715X

No.	DESCRIPTION	No.	DESCRIPTION	No.	DESCRIPTION
1	ROPE HANDLE	42	AIR SHROUD	84	TUBE
2	ROPE	43	CYLINDER GASKET	85	BAFFLE
3	SCREW M6X10	44	T.C.I	86	INTAKE BOLT
4	STARTER CASE	45	CIRCLIP	87	CARBURETOR GASKET
5	SPIRAL SPRING	46	GOVERNING SHAFT	88	CARBURETOR CONNECTOR
6	DRUM SHEAVE	47	CLIP	89	CARBURETOR
7	DRIVING PAWL	48	GOVERNING SPRING	90	AIR CLEANER BASE
8	SPRING	49	GOVERNING LEVER	91	NUT M6
9	DRIVING PAWL	50	CARBURETOR CONNECTING ROD	92	ELEMENT SEAT
10	LOCK WASHAR	51	CARBURETOR SPRING	93	AIR CLEANER ELEMENT
11	FLYWHEEL NUT	52	NUT M6	94	AIR CLEANER COVER
12	BOLT M6X12	53	SCREW M8X55	95	COVER SCREW
13	FAN CASE	54	VALVE LIFTER	109	BOLT M6X20
14	STARTER BUSH	55	PUSH ROD	110	OIL LEVEL SENSOR
15	FAN	56	CONNECTING ROD SCREW M6X28	111	DIODE COMP
16	FLYWHEEL	57	CONNECTING ROD CAP	201	STARTER ASSEMBLY(1+2+...10)
17	AIR SHROUD	58	CONNECTING ROD BODY	202	CRANK SHAFT ASSEMBLY(25+26+40)
18	AIR SHROUD	59	PISTON PIN CIRCLIP	203	VALVE ROCKER ARM ASSEMBLY(73+...76+80...+83)
19	DRAIN PLUG	60	PISTON PIN	204	AIR CLEANER ASSEMBLY(90+91+...95)
20	DRAIN PLUG SEAL	61	POSTON		
21	CRANKCASE	62	EXHAUST VALVE		
22	DOWEL PIN	63	THIRD PISTON RING		
23	OIL SEAL	64	SECOND PISTON RING		
24	BALL BEARING 6203	65	INTAKE VALVE		
25	GOVERNING DRIVING GEAR	66	FRIST PISTON RING		
26	CRANKSHAFT	67	CYLINDER HEAD ASSEMBLY		
27	GOVERNING GEAR SHAFT	68	OIL CHANNEL COVER		
28	WASHER	69	VALVE RETAINER		
29	FLYWHEIGT PIN	70	VALVE SPRING		
30	GOVERNING GEAR	71	EXHAUST BOLT		
31	FLYWHEIGT	72	EXHAUST GASKET		
32	COLLAR	73	ROCKER ARM SEAT		
33	CAMSHAFT ASSEMBLY	74	SCREW M6X15		
34	CRANKCASE GASKET	75	VALVE CLEARANCE ADJUSTING BOLT		
35A	CRANKCASE BACK COVER	76	ROCKER ARM (B)		
35B	CRANKCASE FRONT COVER	77	HEAD COVER GASKET		
36	SCREW M8X16	78	CYLINDER HEAD COVER ASSEMBLY		
37	OIL GAUGE SEAL	79	SPARK PLUG		
38	OIL GAUGE	80	CIRCLIP		
39	BALL BEARING 6303	81	ROCKER ARM SHAFT		
40	TIMING GEAR	82	ROCKER ARM(A)		
41	KEY	83	VAVLE CLEARANCE ADJUSTING NUT		

BM20100830-01