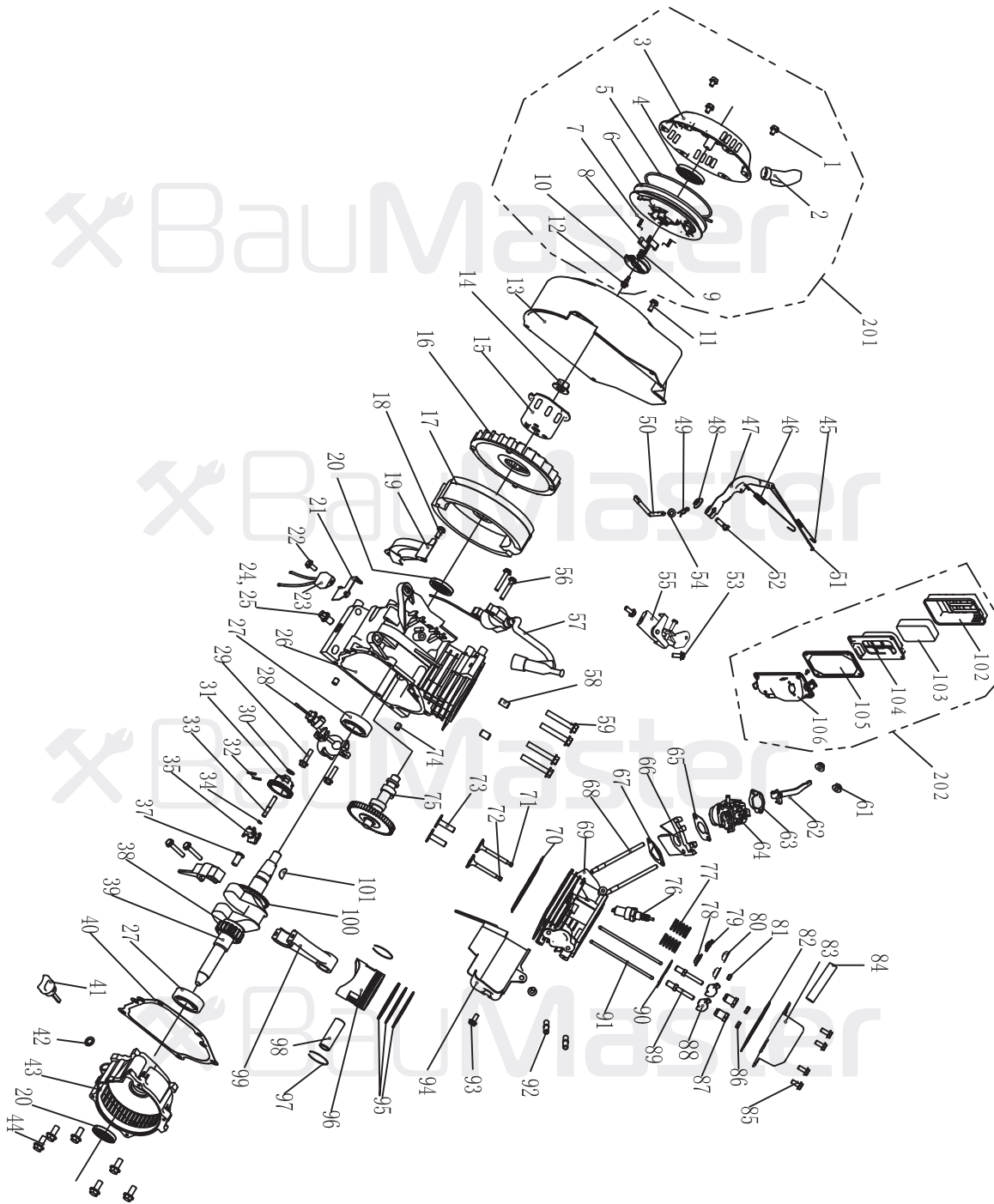


PG-8728X

NO.	DESCRIPTION	NO.	DESCRIPTION
1	SCREW M5×10	39	NUT M8
2	FUEL METER ASSEMBLY	40	RUBBER PAD
3	FUEL TANK CAP	41	MOTOR MOUNT II
4	FUEL FILTER	42	FRAME
5	FLANGE BOLT M6×20	43	MUFFLER COVER
6	WASHER Φ6.5	44	HOLDER,AIR CLEANER
7	MOUNT VIBRATION, FUEL TANK	45	FLANGE BOLT M6×8
8	FUEL TANK	46	MUFFLER GASKET
9	FUEL COCK	47	WASHER Φ8
10	PIPE,FUEL	48	LOCKING WASHER Φ8
11	CLIP	49	NUT M8
12	FLANGE BOLT M6×12	50	MUFFLER
13	FLANGE BOLT M8×20	51	DIODE ASSEMBLY
14	HOLDER (II) ,MUFFLER	52	BOLT M5×20
15	HOLDER (I) ,MUFFLER	53	CARBON BRUSH PINCH
16	TERMINAL BLOCK	54	FLANGE BOLT M5×13
17	FLANGE BOLT M5×12	55	CONTROL PANEL
18	GENERATOR END COVER	56	SWITCH
19	FLANGE BOLT M5×16	57	RECEPTACLE
20	AVR	58	SCREW M4×14
21	BOLT M5×16	59	NUT M4
22	LOCK WASHER Φ5	60	A.C BREAKER
23	WASHER Φ5	61	SCREW M3X6
24	CARBON BURSH ASSEMBLY	62	WASHER Φ3
25	FLANGE BOLT M6×168	63	LOCK WASHER Φ3
26	LOCK WASHER Φ6	64	VOLT METER
27	WASHER Φ6	65	LAMP, POWER
28	END HOUSING	66	BOLT M6×22
29	STATOR COVER	67	NUT M6
30	STATOR ASSEMBLY	68	D.C 10A BREAKER
31	FLANGE BOLT M8×243	69	RED POSITIVE TERMINAL
32	SPRING WASHER Φ8		BLACK NEGATIVE TERMINAL
33	WASHER Φ8	70	PLUG
34	ROTOR ASSEMBLY	71	SHEATH,WIRE
35	ENGINE ASSEMBLY	72	PLUG
36	GROUND WIRE	73	CONTROL BOX
37	NUT M6	101	MUFFLER HOLDER ASSEMBLY (12+13+14+15)
38	MOTOR MOUNT I		



ENGINE FOR PG-8728X

No.	DESCRIPTION	No.	DESCRIPTION	No.	DESCRIPTION
1	FLANGE BOLT M6×8	42	OIL FILLER CAP PACKING	83	HEAD OVER COMP
2	RECOIL STARTER KNOB	43	CRANKCASE COVER	84	BREATHER TUBE
3	RECOIL STARTER COMP	44	FLANGE BOLT M8×32	85	FLANGE BOLT M6×12
4	RECOIL STARTER SPRING	45	THROTTLE RETURN SPRING	86	PIVOT ADJUSTING NUT
5	RECOIL STARTER ROPE	46	GOVERNOR SPRING	87	ROCKER ARM PIVOT
6	RECOIL STARTER REEL	47	GOVERNOR ARM	88	VALVE ROCKER ARM
7	RETURN SPRING	48	NUT M6	89	PIVOT BOLT
8	STARTER RATCHET	49	LOCK PIN	90	PUSH ROD GUIDE PLATE
9	RATCHET GUIDE SPRING	50	GOVERNOR ARM SHAFT	91	PUSH ROD
10	RATCHET GUIDE	51	GOVERNOR ROD	92	STUD BOLT M8×35
11	FLANGE BOLT M6×12	52	GOVERNOR ARM BOLT	93	FLANGE BOLT M6×8
12	SETTING SCREW	53	FLANGE BOLT M6×12	94	SHROUD COMP
13	FAN COVER COMP	54	GOVERNOR WASHER		FIRST RING SET
14	NUT M14	55	GOV.SETTING COMP.	95	SECOND RING SET
15	START HUB	56	FLANGE BOLT M6×25		RING COMP
16	COOLING FAN	57	IGNITOR	96	PISTON
17	FLY WHEEL	58	DOWEL PIN 10×16	97	PISTON PIN CLIP
18	FLANGE BOLT M6×20	59	FLANGE BOLT M8×55	98	PISTON PIN
19	SIDE PLACE	61	NUT M6	99	CONNECTING ROD COMP
20	OIL SEAL	62	CHOKE LEVEL COMP	100	GEAR,CRANKSHAFT
21	DIODE BASE COMP	63	CARBURETOR WASHER	101	KEY
22	FLANGE BOLT M6×8	64	CARBURETOR ASSEMBLY	102	AIR CLEANER COVER COMP
23	DIODE COMP	65	CARBURETOR PACKING	103	ELEMENT
24	DRAIN PLUG BOLT	66	CARBURETOR INSULATOR	104	SEPARATOR
25	DRAIN BOLT WASHER	67	INSULATOR PACKING	105	AIR CLEANER SEAL
26	CRANKCASE	68	STUD BOLT M6×90	106	AIR CLEANER CASE COMP
27	RADIAL BALL BEARING 6205	69	CYLINDER HEAD COMP	201	STARTER ASSEMBLY(1+2+...+10+12)
28	OIL LEVEL SWITCH ASSY	70	CYLINDER HEAD GASKET	202	AIR CLEANER GENERAL ASSY(102+..106)
29	FLANGE BOLT M6×25	71	INTAKE VALVE		
30	GOVERNOR SHAFT WASHER	72	EXHAUST VALVE		
31	GOVERNOR WEIGHT HOLDER	73	VALVE LIFTER		
32	GOVERNOR WEIGHT PIN	74	DOWEL PIN 8×14		
33	GOVERNOR SHAFT	75	CAMSHAFT ASSEMBLY		
34	GOVERNOR HOLDER CLIP	76	SPARK PLUG		
35	GOVERNOR WEIGHT	77	VALVE SPRING		
37	GOVERNOR COVER	78	EXHAUST VALVE SPRING RETAINER		
38	GEAR,DRIVE	79	INTAKE VALVE SPRING RETAINER		
39	CRANKSHAFT COMP	80	OIL SEAL,VALVE		
40	CASE OVER PACKING	81	VALVE ROTATOR		
41	OIL FILLER CAP ASSEMBLY	82	HEAD OVER PACKING		