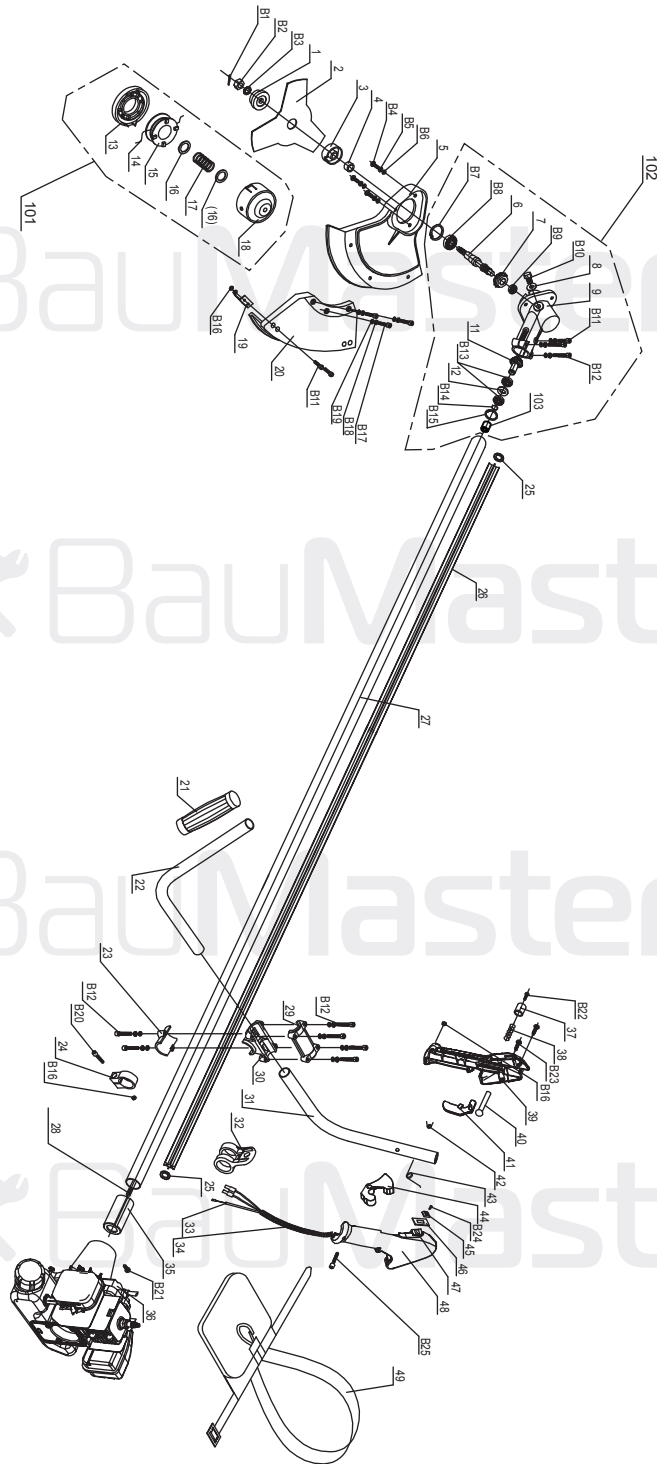


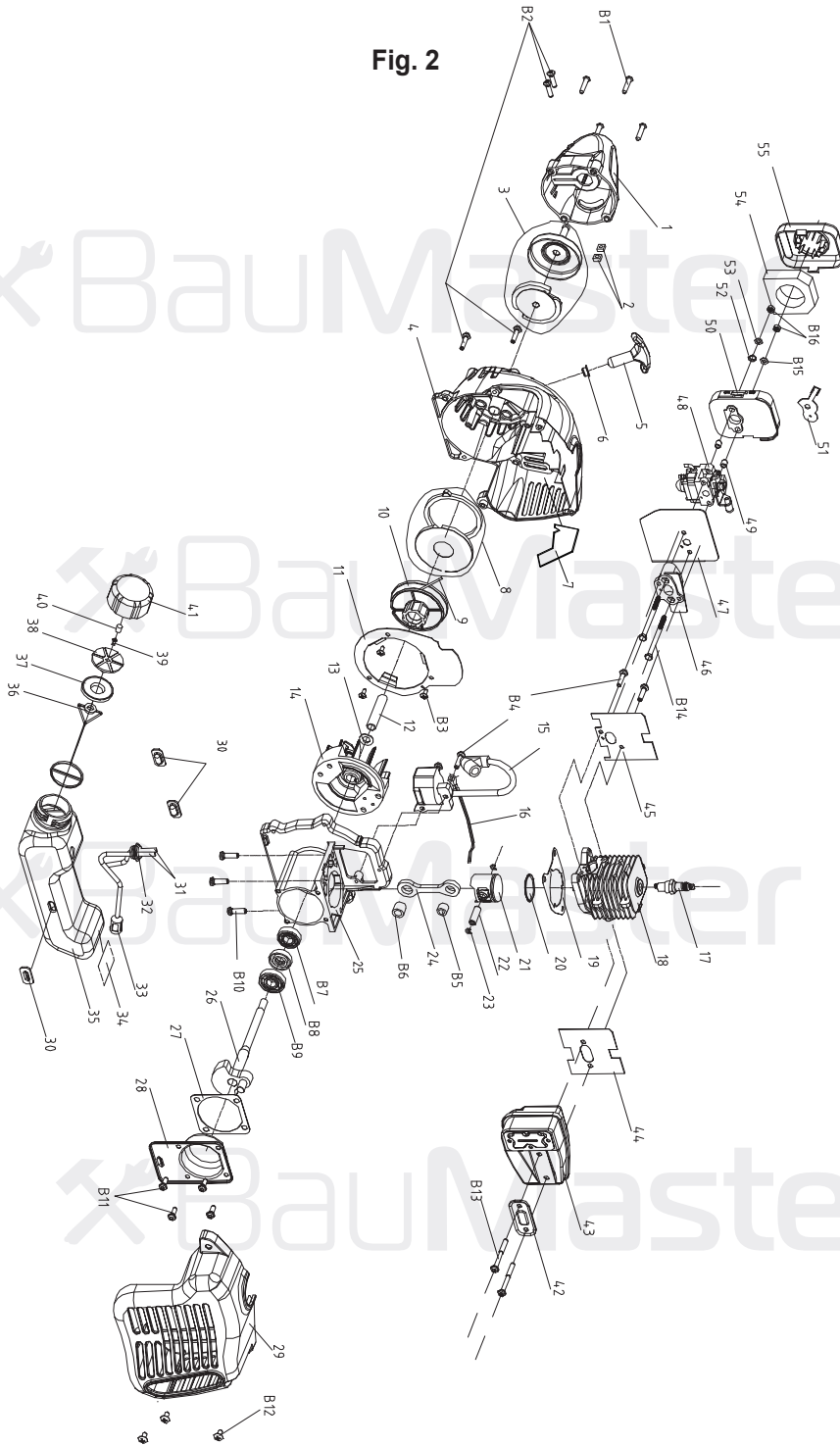
Fig. 1



BT-8925X

NO.	DESCRIPTION	NO.	DESCRIPTION
1	LOWER PLATE	40	PIN
2	BLADE	41	INSURANCE OF THE TRIGGER
3	UPPER PLATE	42	TORSION-BAR SPRING A
4	BUSH	43	TORSION-BAR SPRING B
5	GUARD SHIELD OF BLADE	44	THROTTLE LINE
6	DRIVEN SHAFT	45	SWITCH
7	DRIVEN GEAR	46	ALUMINUM SCUTCHEON
8	AIRPROOF GASKET	47	SWITCH ASSEMBLY
9	GEAR CASE	48	HANDLE B
11	INITIATIVE GEAR SHAFT	49	SHOULDER STRAP
12	BEARING WASHER	B1	PIN 2x16
13	ROPE WHEEL COVERING	B2	SCREW M10x1.25
14	NYLON ROPE Ø2.5x2100	B3	WASHER 10
15	ROPE SEAT	B4	SCREW
16	GASKET	B5	SPRING WASHER 5
17	PULL-OUT PIECE SPRING A	B6	GASKET 5
18	BOX OF ROPE	B7	BAFFLE RING 32
19	KNIFE	B8	BEARING 6201
20	PLASTIC GUARD SHIELD	B9	BEARING 629
21	PASTERN SHEATH	B10	BOLT M8x10
22	STEEL TUBE A	B11	SCREW M5x12
23	LOWER PLATE	B12	SCREW M5x25
24	ORIENTATING RING	B13	BEARING 6900-Z
25	BAFFLE RING	B14	BAFFLE RING 10
26	PLASTIC TUBE A	B15	BAFFLE RING 22
27	ALUMINUM TUBE A	B16	NUT M5
28	FLEXIBLE SHAFT A	B17	SCREW M6x20
29	UPPER PLATE	B18	SPRING WASHER 6
30	ORIENTATING BLOCK	B19	WASHER 6
31	STEEL TUBE B	B20	SCREW M5x16
32	RING	B21	SCREW ST4.8x10
33	THROTTLE LINE	B22	SCREW ST2.9x15
34	PLASTIC TUBE	B23	SCREW ST2.9x20
35	SHOCK ATTENUATION TUBE	B24	SCREW ST2.9x9
36	ENGINE	B25	SCREW M5x30
37	BUTTON	101	NYLON LINE SPOOL (13+14...+18)
38	PULL-OUT PIECE SPRING B	102	GEAR BOX ASSEMBLE (6+7...+12+B7+B8...+B15)
39	HANDLE A	103	LIMIT BUSH

Fig. 2



ENGINE FOR BT-8925X

NO.	DESCRIPTION	NO.	DESCRIPTION
B1	SCREW ST4.8x25	21	PISTON
B2	SCREW M5x20	22	PISTON PIN
B3	SCREW ST4x12	23	RETAINER OF PISTON PIN
B4	SCREW M5x23L	24	CONNECTOR ROD
B5	QUILL BEARING 8x12x10	25	CRANKCASE
B6	QUILL BEARING 9.5x14.3x12.7	26	CRANK SHAFT ASSEMBLY
B7	GROOVE BALL BEARING 6001LLU	27	WASHER
B8	OIL SEAL TC28x12x7	28	COVER OF CRANKCASE
B9	GROOVE BALL BEARING 6201	29	REAR COVER
B10	SCREW M6x20	30	OIL BOX MAT
B11	SCREW M5x15	31	FUEL VITTA
B12	SCREW ST4.8x16	32	BASE OF FUEL PIPE
B13	SCREW M5x53	33	CLEANER
B14	SCREW M5x68	34	PROTECTIVE FILM
B15	WASHER 5	35	FUEL TANK
B16	NUT M5	36	OIL-BOX-COVER FLYING RINGS
1	CLUTCH COVER	37	OIL BOX SHEET GASKET
2	NUT M5	38	OIL DRAIN VALVE SEAT
3	CLUTCH	39	OIL DRAIN VALVE
4	ENGINE COVER	40	OIL DRAIN FILTER
5	START GRIPE	41	OIL BOX COVER
6	NESTING	42	VENT-PIPE FOLLOWER
7	PROTECTIVE FILM	43	VENT-PIPE
8	START-UP SPRING	44	VENT-PIPE GASKET
9	START ROPE	45	INTAKE GASKET
10	START WHEEL	46	CARBURETOR BASE
11	START WHEEL PLATE	47	CARBURETOR GASKET
12	TUBE	48	CARBURETOR
13	WASHER 10	49	AIR FILTER BUSH
14	FLYWHEEL ASSEMBLY	50	AIR FILTER
15	IGNITION WINDING	51	CHOKE LEVER
16	WIRE	52	SPRING OF CHOKE
17	SPARK PLUG	53	WASHER 5x13.5
18	CYLINDER	54	FILTER COVER FOAM
19	CYLINDER GASKET	55	AIR FILTER TOP COVER
20	PISTON RING		

BM20110520-02