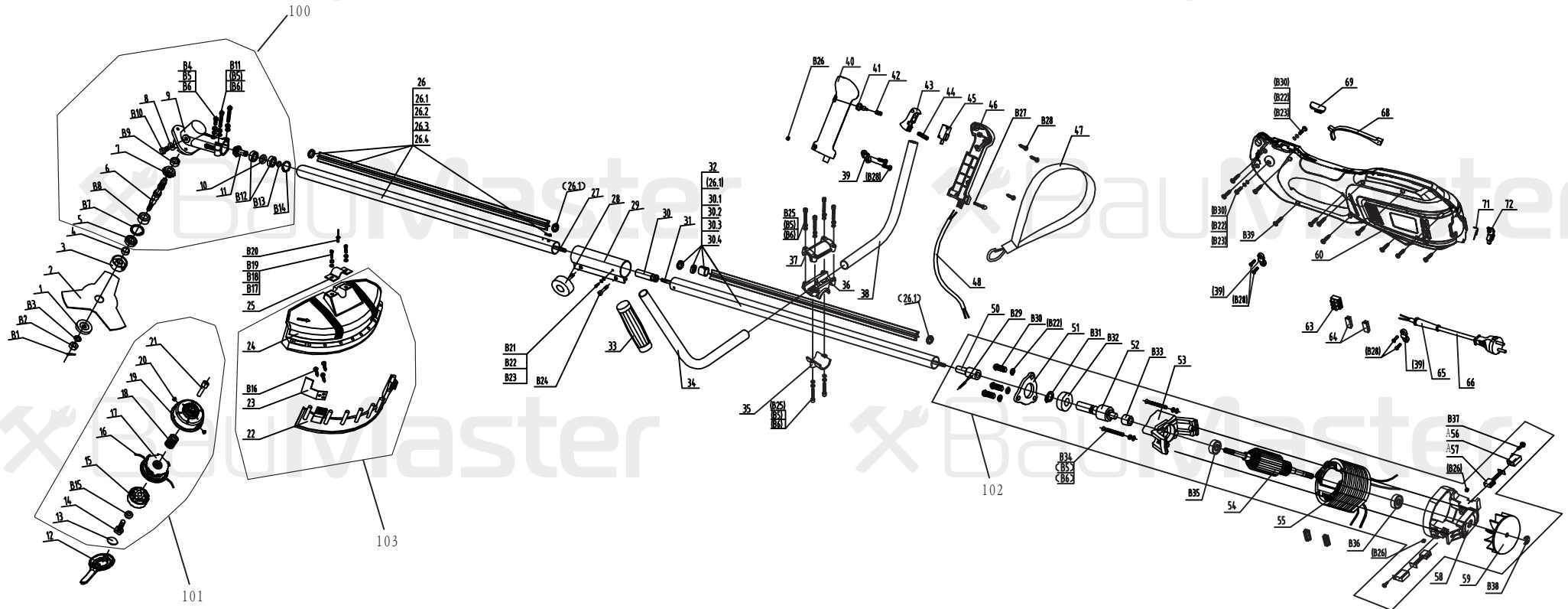


GT-3525



GT-3525

NO.	DESCRIPTION	NO.	DESCRIPTION	NO.	DESCRIPTION
1	DOWN FLANGE	32.4	STEEL TUBE B	B6	WASHER 5
2	BLADE	33	RUBBER HANDLE	B7	CIRCLIP 32
3	UPPER FLANGE	34	STEEL TUBE A	B8	BEARING 6201Z
4	LOCATING BUSH	35	DOWN HANDLE CLAMP	B9	BEARING 629Z
5	OIL SEAL	36	HANDLE SUPPORT	B10	BOLT M8X10
6	SPINDLE	37	UPPER HANDLE CLAMP	B11	SCREW M5X20
7	BIG GEAR	38	STEEL TUBE B	B12	BEARING 6900Z
8	SEAL RING	39	CABLE CLAMP	B13	CIRCLIP 10
9	GEAR BOX	40	LEFT HANDLE	B14	CIRCLIP 22
10	WASHER	41	SAFETY ROD	B15	WASHER 6
11	PINION SHAFT	42	SPRING	B16	SCREW ST4.2X12
12	PLASTIC SPANNER	43	SWITCH TRIGGER	B17	SCREW M6X29
13	JAM	44	SPRING	B18	SPRING WASHER 6
14	SQUARE HEAD SCREW	45	SWITCH	B19	WASHER 6
15	SPOOL COVER	46	RIGHT HANDLE	B20	RIVET 4X6
16	NYLON LINE	47	SHOULDER STRAP	B21	SCREW M4X10
17	BASE OF NYLON LINE	48	CABLE	B22	SPRING WASHER 4
18	SPRING	50	SOFT SHAFT COUPLER	B23	WASHER 4
19	BOX OF NYLON LINE	51	GEAR BOX COVER	B24	SCREW M6X14
20	BUSH	52	SMALL GEAR SHAFT	B25	SCREW M5X25
21	HEXAGONAL SHAFT	53	MOTOR FRONT BRACKET	B26	NUT M5
22	DOWN GUARD	54	ROTOR	B27	SCREW M5X32
23	BLADE	55	STATOR	B28	SCREW ST4.2X15
24	GUARD	56	CARBON BRUSH HOLDER	B29	PIN Ø3X18
25	GUARD PRESS BOARD	57	CARBON BRUSH	B30	SCREW M4X12
26	STEEL TUBE ASSEMBLY A	58	MOTOR BACK BRACKET	B31	CIRCLIP 10
26.1	TOOL CIRCLIP	59	FAN	B32	BEARING 6900Z
26.2	PLASTIC TUBE A	60	HOUSING	B33	NEEDLE BEARING HK0608
26.3	STEEL TUBE A	63	TERMINAL BLOCK	B34	SCREW M5X55
26.4	SHRAPNEL	64	RUBBER LINE	B35	BEARING 6000Z
27	SOFT SHAFT A	65	CABLE SLEEVE	B36	BEARING 608Z
28	LOCKING KNOB	66	CABLE & PLUG	B37	SCREW ST2.9X10
29	CONNECT TUBE	68	SWITCH TRIGGER JAM	B38	CIRCLIP 6
30	SHAFT BUSH	69	SAFETY LOCKING BUTTON JAM	B39	SCREW ST4.2X15
31	SOFT SHAFT B	B1	COTTER	100	GEAR BOX ASSEMBLY
32	STEEL TUBE ASSEMBLY B	B2	NUT M10X1.25	101	SPOOL ASSEMBLY
32.1	TOOL CIRCLIP	B3	WASHER 10	102	MOTOR ASSEMBLY
32.2	BUSH	B4	SCREW M5X12	103	GUARD ASSEMBLY
32.3	PLASTIC TUBE B	B5	SPRING WASHER 5		