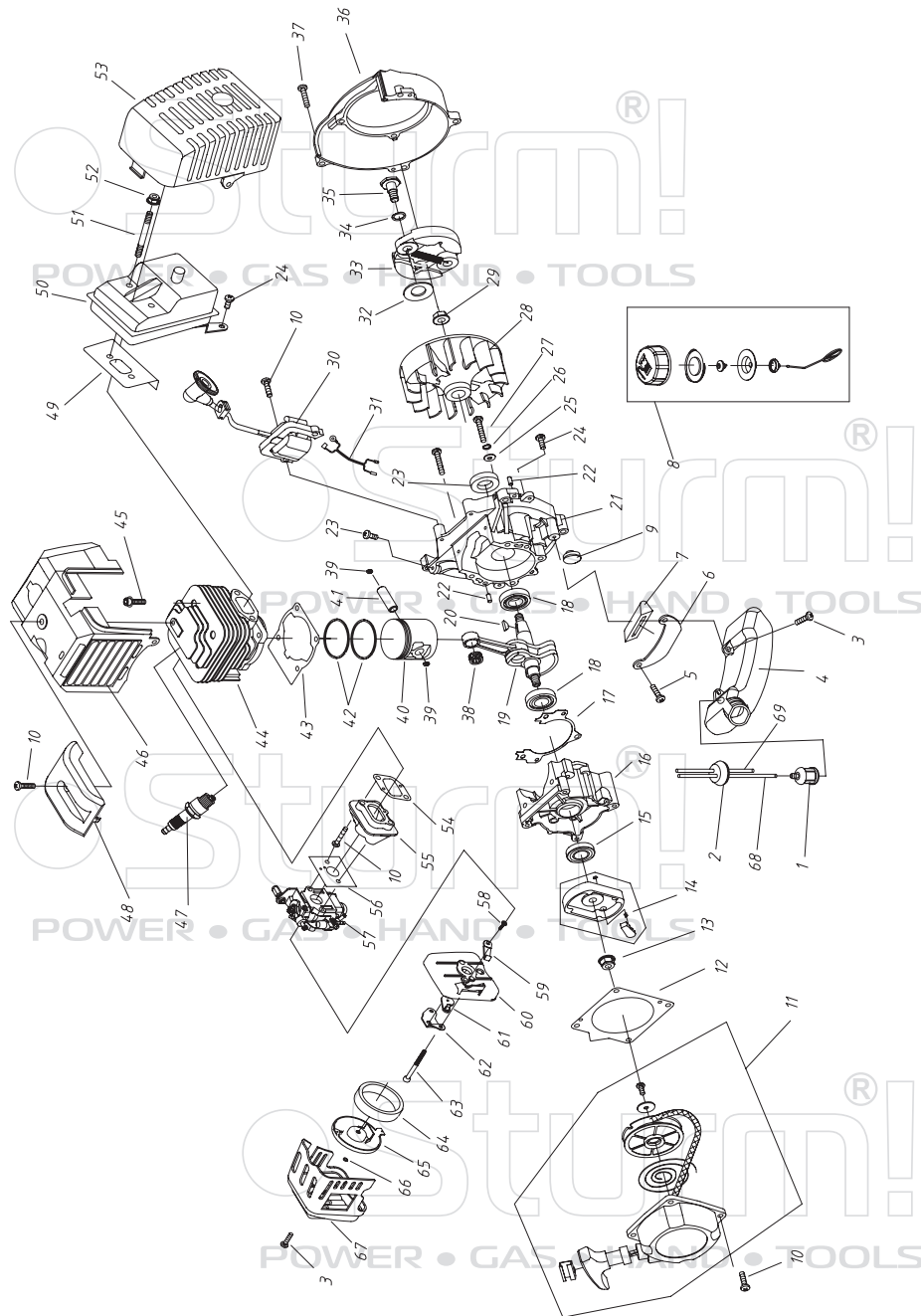


EA1530

NO.	DESCRIPTION	NO.	DESCRIPTION
1	ENGINE	3-9	BOX,RIGHT
2	GEAR BOX ASS'Y	3-10	SCREW ST3.5X16
2-1	CLUTCH DRUM COMP.	3-11	SCREW M5X30
2-2	GEAR BOX COVER 1	3-12	CABLE COMP. 500X82
2-3	PIN B4X10	3-13	TUBE 340
2-4	BEARING 6202-2RS/P5	3-14	STOP LINE 600
2-5	CIRCLIP Ø35	3-15	HANDGRIP
2-6	CIRCLIP Ø15	3-16	SPRING
2-7	GEAR 1	3-17	NUT M5
2-8	GEAR CASE COVER 2	3-18	SAFE PIN
2-9	BEARING 6201/P5	4	GRIP LEFT
2-10	GEAR 2	5	OPERATE FRAME
2-11	BEARING 6004/OPEN	6	SCREW M6X20
2-12	OIL-SEAL 20X35X7	7	GEAR CASE WASHER
2-13	GEAR BOX COVER 3	8	PAD WASHER
2-14	SCREW M5X45	9	RABBER PAD
2-15	OUTPUT SHAFT	10	SCREW M8
2-16	SCREW M5X30	11	PIN
2-17	SCREW M10X10	12	PIN 1. 7X32
2-18	GEAR 3	15	CONG OUTPUT SHAFT
2-19	SCREW M5X25	16	INNER HEXAGON KEY
3	LEVER ASS'Y	17	COMMON KEY
3-1	SCREW ST2.9X10	18	SLEAVE
3-2	BUTTON	19	SPANNER
3-3	SPRING	20	SPANNER
3-4	BOX,LEFT	21	FUEL TANK
3-5	STOP BUTTON	22	AIR DEFLECTOR
3-6	CLOCK PIN	23	BLACK CLEW
3-7	HANDGRIP		
3-8	SPRING		

ST20121010



ENGINE FOR EA1530

NO.	DESCRIPTION	NO.	DESCRIPTION
1	CLEANER COVER	36	FAN COVER
2	PLUG	37	BOLT M5X25
3	SCREW M5X16	38	BEARING
4	FUEL TANK	39	RING
5	SCREW M5X25	40	PISTON
6	STAND	41	PISTON PIN
7	RUBBER COVER	42	PISTON RING
8	FUEL TANK LID COMP.	43	GASKET
9	RUBBER WASHER	44	CYLINDER
10	SCREW M5X20	45	SCREW M5X20
11	STARTER	46	GUIDE COVER ASSY
12	GASKET	47	SPARK PLUG
13	NUT M8	48	COVER
14	START PULLEY COMP.	49	GASKET
15	SEAL L2X22X7	50	MUFFLER
16	CRANK CASE	51	BOLT 6X65
17	GASKET	52	NUT M6
18	BEARING 6202/P4	53	MUFFLER COVER
19	CRANK SHAFT	54	ADMITTING PIPE
20	WOODRUFF KEY 3X13	55	ADMITTING PIPE
21	CRANK CASE	56	GASKET
22	PIN B5X12	57	CARBURETOR
23	SEAL 15X30X7	58	SCREW 5T2.9X6.5
24	SCREW M5X12	59	CHOKE HANDLE
25	WASHER 5	60	INSIDE COVER
26	WASHER 5	61	CHOKE
27	SCREW M5X30	62	BUFLER
28	FLY WHEEL	63	SCREW M5X55
29	NUT M8	64	FILTER NET
30	COIL	65	INSIDE COVER
31	CORD COMP.	66	O-WASHER 3.15X1.8
32	WASHER B	67	OUTSIDE COVER
33	EXPANDER COMP.	68	FUEL PIPE
34	WASHER	69	FUEL PIPE
35	SCREW PIN		

ST20121010