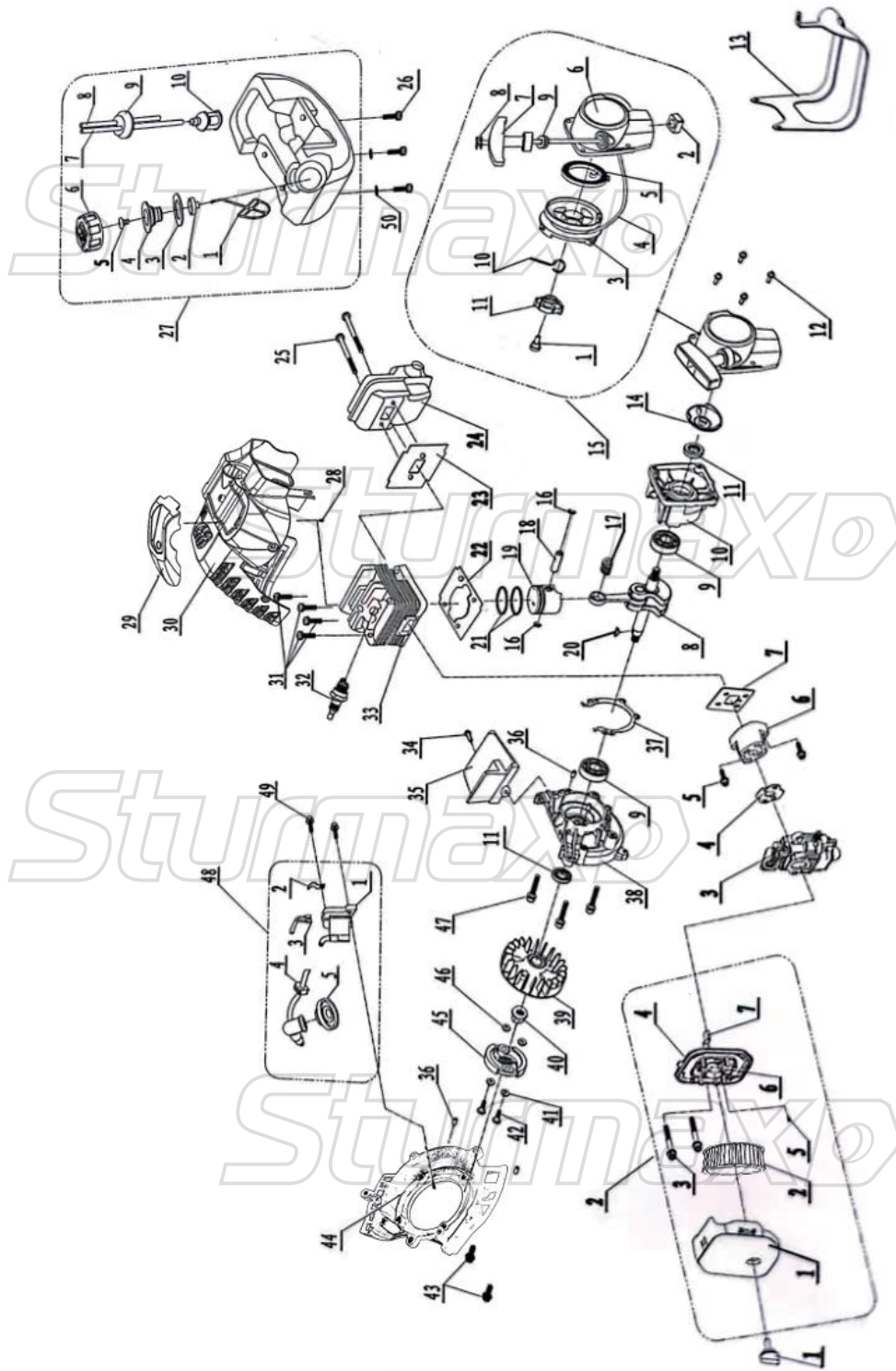


# ENGINE FOR BTM8926P



NO.	DESCRIPTION	NO.	DESCRIPTION
1	NUT	25	SCREW
2	AIR FILTER ASSY	26	SCREW
2-1	AIR FILTER COVER	27	TANK
2-2	SPONGE	27-1	CAP TETAINER
2-3	SCREW	27-2	RACQUET
2-4	CARBURETOR HOLDER	27-3	SEALING RING
2-5	SCREW	27-4	CHECK VALVE SEAT
2-6	CHOKE	27-5	CHECK VALVE
2-7	CHOKE HANDLE	27-6	OIL CAP
3	CARBURETOR	27-7	INTO PIPE
4	GASKET	27-8	RETURN PIPE
5	SCREW	27-9	TUBE SEAT
6	INLET PIPE	27-10	FUEL FILTER
7	GASKET	28	SCREW
8	CRANKSHAFT ASSY	29	TOP COVER
9	BEARING6001	30	ENGINE COVER
10	RIGHTCRANKSHAFT CASE	31	SCREW
11	OIL SEAL12*22*7	32	SPARK PLUG
12	SCREW	33	CYLINDER
13	TANK PROTECTOR	34	SCREW
14	DRIVING PLATE	35	SHIELD
15	STARTER ASSY	36	PIN
15-1	SCREW	37	GASKET
15-2	NUT	38	LEFT CRANKSHAFT CASE
15-3	WHEEL	39	FLYING WHEEL
15-4	ROPE	40	NUT
15-5	SPRING	41	SHIM
15-6	COVER	42	SCREW
15-7	HANDLE	43	SCREW
15-8	ROPE CLAMP	44	SIDE COVER
15-9	ROPE SLEEVE	45	CLUTCH ASSY
15-10	SMALL SRPRING	46	SHIM
15-11	CLAW	47	SCREW
16	PISTON PIN RING	48	COIL ASSY
17	BEARING	48-1	COIL
18	PISTON PIN	48-2	CORD GASKET
19	PISTON	48-3	OFF LINE
20	WOODRUFF KEY	48-4	CORD GROMMET
21	PISTON RING	48-5	SPARK PLUG CAP
22	GASKET	49	SCREW
23	GASKET	50	WASHER
24	MUFFLER		