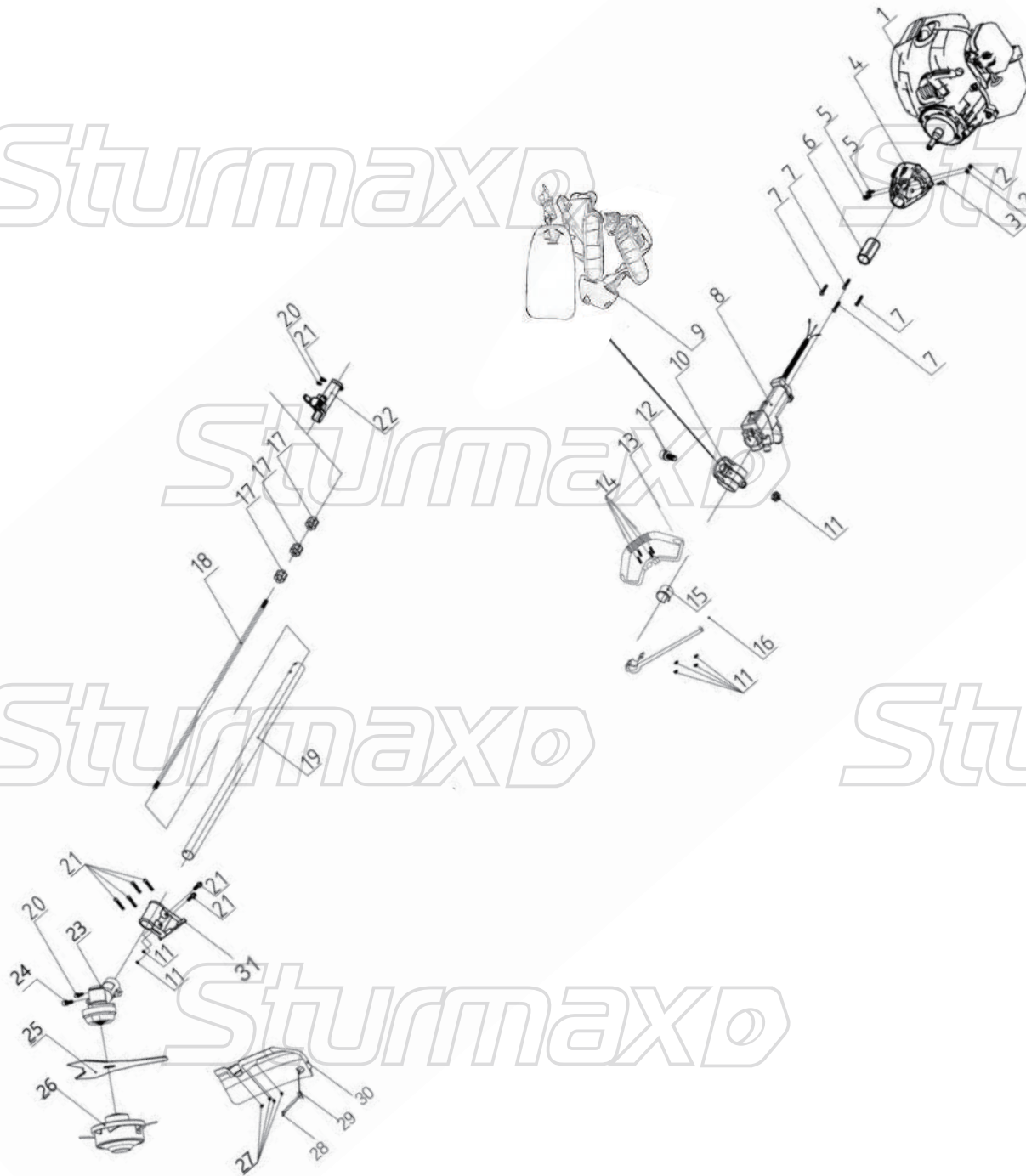


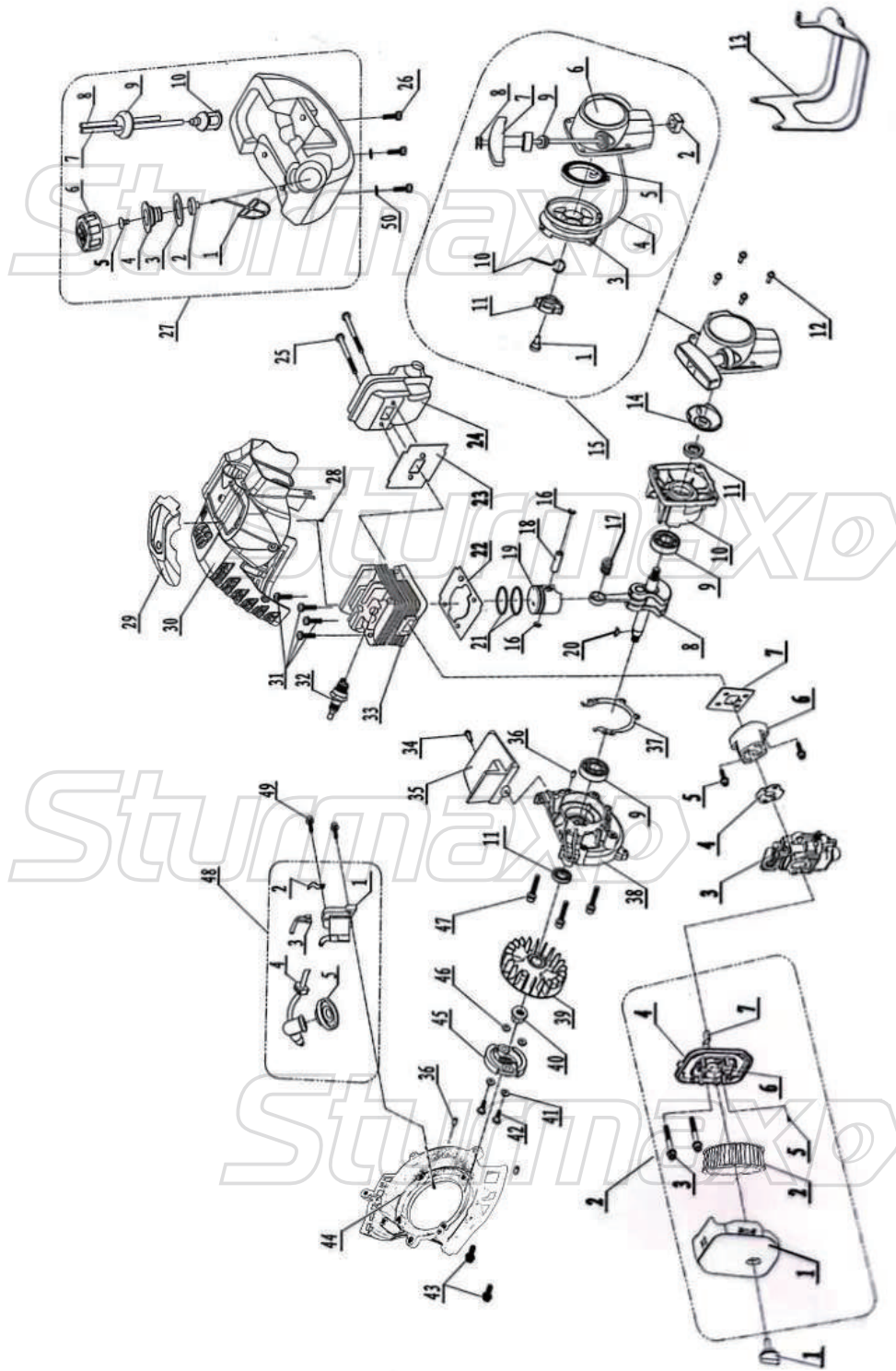
BTM8926SP

NO.	DESCRIPTION
1	ENGINE
2	SQUARE NUT
3	BOLT
4	CONNECTING PLATE
5	SCREW
6	DAMPER
7	BOLT
8	THROTTLE HANDLE
9	BELT
10	BELT HOLDER
11	NUT
12	SCREW
13	FRONT HANDLE
14	SCREW
15	DAMPER
16	FIX PLATE
17	OIL BEARINGS
18	TRANSMISSION SHAFT
19	ALUMINUM PIPE
20	SCREW
21	SCREW
22	CONNECTOR
23	GEAR CASE
24	SCREW
25	3T BLADE
26	SPOOL
27	NUT
28	BOLTS
29	SMALL BLADE
30	PROTECTION GUIDE
31	FIX PLATE

BTM8926SP-EX-UK241010BT



ENGINE FOR BTM8926SP



NO.	DESCRIPTION	NO.	DESCRIPTION
1	NUT	25	SCREW
2	AIR FILTER ASSY	26	SCREW
2-1	AIR FILTER COVER	27	TANK
2-2	SPONGE	27-1	CAP TETAINER
2-3	SCREW	27-2	RACQUET
2-4	CARBURETOR HOLDER	27-3	SEALING RING
2-5	SCREW	27-4	CHECK VALVE SEAT
2-6	CHOKE	27-5	CHECK VALVE
2-7	CHOKE HANDLE	27-6	OIL CAP
3	CARBURETOR	27-7	INTO PIPE
4	GASKET	27-8	RETURN PIPE
5	SCREW	27-9	TUBE SEAT
6	INLET PIPE	27-10	FUEL FILTER
7	GASKET	28	SCREW
8	CRANKSHAFT ASSY	29	TOP COVER
9	BEARING6001	30	ENGINE COVER
10	RIGHTCRANKSHAFT CASE	31	SCREW
11	OIL SEAL12*22*7	32	SPARK PLUG
12	SCREW	33	CYLINDER
13	TANK PROTECTOR	34	SCREW
14	DRIVING PLATE	35	SHIELD
15	STARTER ASSY	36	PIN
15-1	SCREW	37	GASKET
15-2	NUT	38	LEFT CRANKSHAFT CASE
15-3	WHEEL	39	FLYING WHEEL
15-4	ROPE	40	NUT
15-5	SPRING	41	SHIM
15-6	COVER	42	SCREW
15-7	HANDLE	43	SCREW
15-8	ROPE CLAMP	44	SIDE COVER
15-9	ROPE SLEEVE	45	CLUTCH ASSY
15-10	SMALL SRPRING	46	SHIM
15-11	CLAW	47	SCREW
16	PISTON PIN RING	48	COIL ASSY
17	BEARING	48-1	COIL
18	PISTON PIN	48-2	CORD GASKET
19	PISTON	48-3	OFF LINE
20	WOODRUFF KEY	48-4	CORD GROMMET
21	PISTON RING	48-5	SPARK PLUG CAP
22	GASKET	49	SCREW
23	GASKET	50	WASHER
24	MUFFLER		