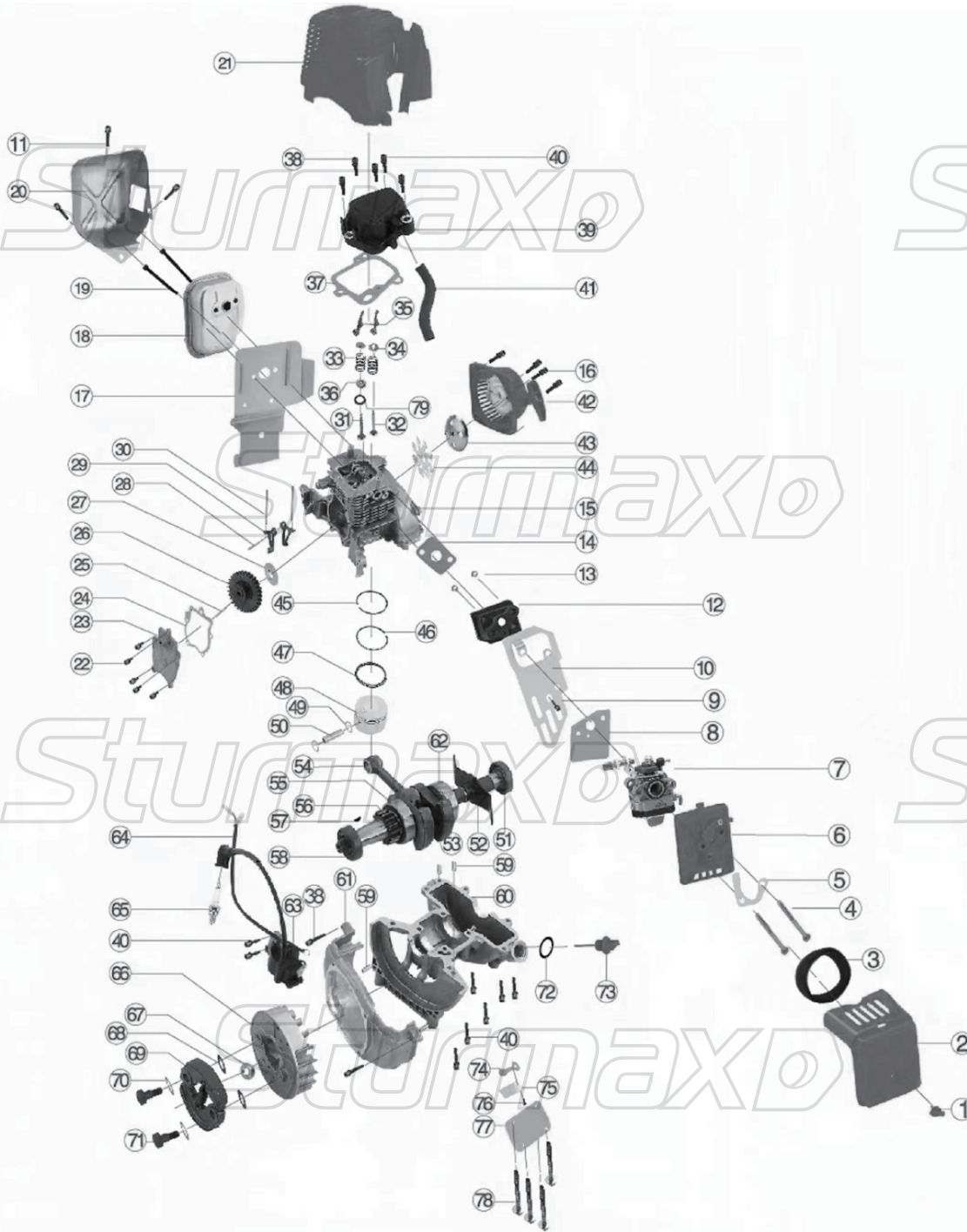


# ENGINE FOR BTM8931P



NO.	DESCRIPTION	NO.	DESCRIPTION
1	KNOB	41	AIR FILTER COVER
2	AIR FILTER COVER	42	FILTER
3	FILTER	43	SCREW
4	SCREW	44	OIL DEFLECTOR
5	OIL DEFLECTOR	45	AIR FILTER SEAT
6	AIR FILTER SEAT	46	CARBURETOR
7	CARBURETOR	47	CARBURETOR GASKET
8	CARBURETOR GASKET	48	SCREW
9	SCREW	49	INTAKE BAFFLE PLATE
10	INTAKE BAFFLE PLATE	50	SCREW
11	SCREW	51	INTAKE PIPE
12	INTAKE PIPE	52	NUT
13	NUT	53	INTAKE GASKET
14	INTAKE GASKET	54	CYLINDER BODY
15	CYLINDER BODY	55	SCREW
16	SCREW	56	MUFFLER PARTITION
17	MUFFLER PARTITION	57	MUFFLER
18	MUFFLER	58	SCREW
19	SCREW	59	MUFFLER COVER
20	MUFFLER COVER	60	PLASTIC COVER(CYLINDER)
21	PLASTIC COVER(CYLINDER)	61	SCREW
22	SCREW	62	SIDE COVER
23	SIDE COVER	63	SIDE COVER GASKET
24	SIDE COVER GASKET	64	CAMSHAFT PIN
25	CAMSHAFT PIN	65	CAMSHAFT
26	CAMSHAFT	66	ANTI WEAR GASKET
27	ANTI WEAR GASKET	67	LOWER ARM PIN
28	LOWER ARM PIN	68	LOWER ARM
29	LOWER ARM	69	SUPPORT ROD
30	SUPPORT ROD	70	VALVE
31	VALVE	71	VALVE
32	VALVE	72	VALVE SPRING
33	VALVE SPRING	73	VALVE BUCKLE
34	VALVE BUCKLE	74	UPPER ARM
35	UPPER ARM	75	VALVE OIL SEAL
36	VALVE OIL SEAL	76	SEAL RING
37	SEAL RING	77	SCREW
38	SCREW	78	CYLINDER COVER ASSY
39	CYLINDER COVER ASSY	79	SCREW
40	SCREW		