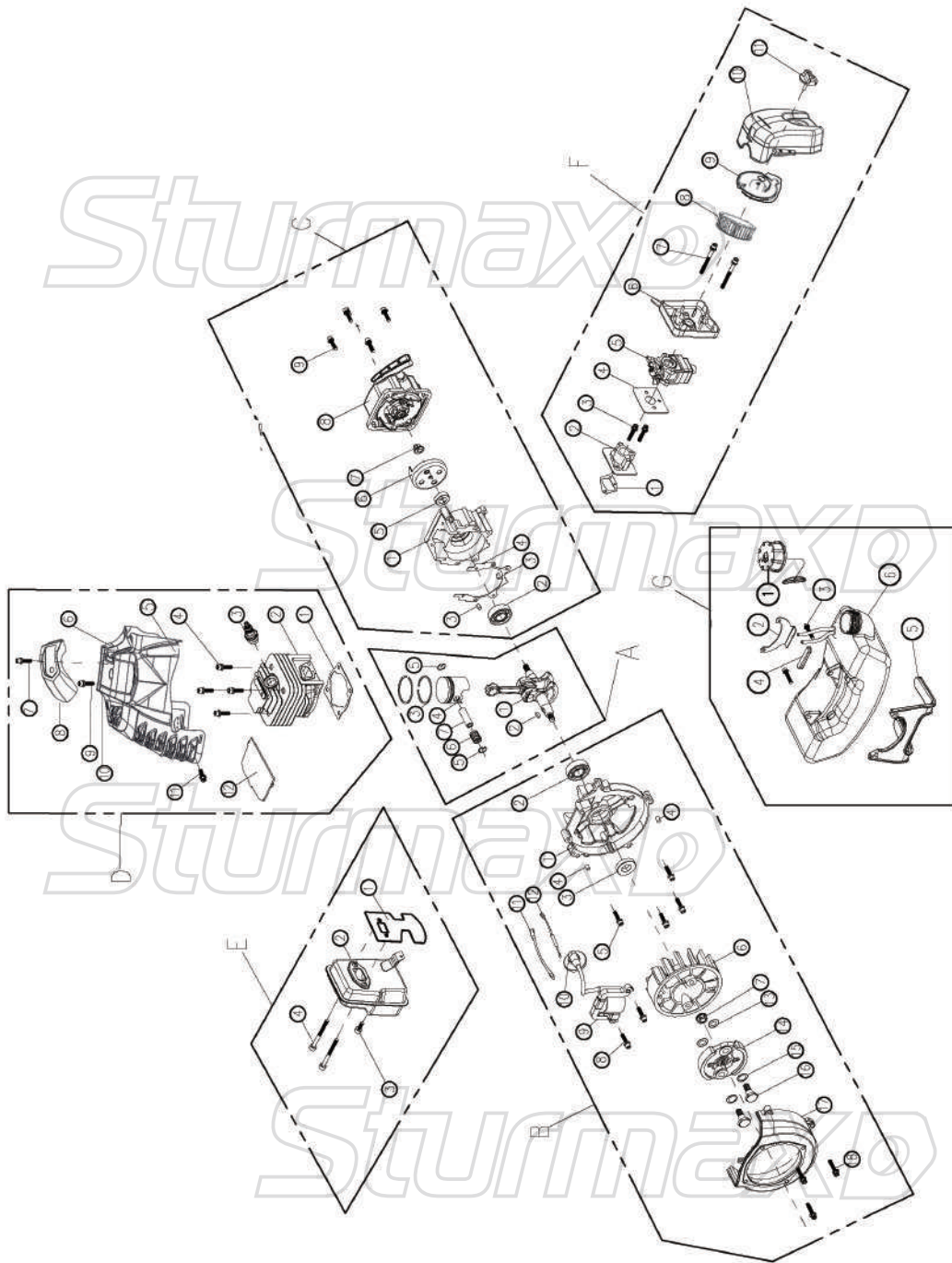


ENGINE FOR BTM8933P



NO.	DESCRIPTION	NO.	DESCRIPTION
A-1	CRANKSHAFT ASSY	D-1	GASKET
A-2	KEY	D-2	CYLINDER
A-3	PISTON RING	D-3	SPARK PLUG
A-4	PISTON	D-4	SCREW
A-5	PISTON PIN RING	D-5	SCREW
A-6	BEARING	D-6	ENGINE COVER
A-7	PISTON	D-7	SCREW
B-1	CRANKSHAFT CASE	D-8	TOP COVER
B-2	BEARING	D-9	SCREW
B-3	OIL SEAL	D-10	SHIM
B-4	PIN	D-11	SCREW
B-5	SCREW	D-12	WIND SCREEN
B-6	FLYING WHEEL	E-1	GASKET
B-7	NUT	E-2	MUFFLER
B-8	SCREW	E-3	SCREW
B-9	COIL	E-4	SCREW
B-10	SPARK PLUG CAP	F-1	GASKET
B-11	OFF LINE	F-2	INLET PIPE
B-12	OFF LINE	F-3	SCREW
B-13	SHIM	F-4	GASKET
B-14	CLUTCH ASSY	F-5	CARBURETOR
B-15	SHIM	F-6	CARBURETOR HOLDER
B-16	SCREW	F-7	SCREW
B-17	SIDE COVER	F-8	SPONGE
B-18	SCREW	F-9	SPONGE COVER
C-1	CRANKSHAFT CASE	F-10	AIR FILTER COVER
C-2	BEARING	F-11	NUT
C-3	PIN	G-1	TANK CAP
C-4	GASKET	G-2	TANK HOLDER
C-5	OIL SEAL	G-3	SCREW
C-6	DRIVING PLATE	G-4	DAMPING
C-7	NUT	G-5	TANK PROTECTOR
C-8	STARTER ASSY	G-6	TANK
C-9	SCREW		

BTM8933P-EX-UK241010BT