

SturmaxD

BTM8943 BTM8952

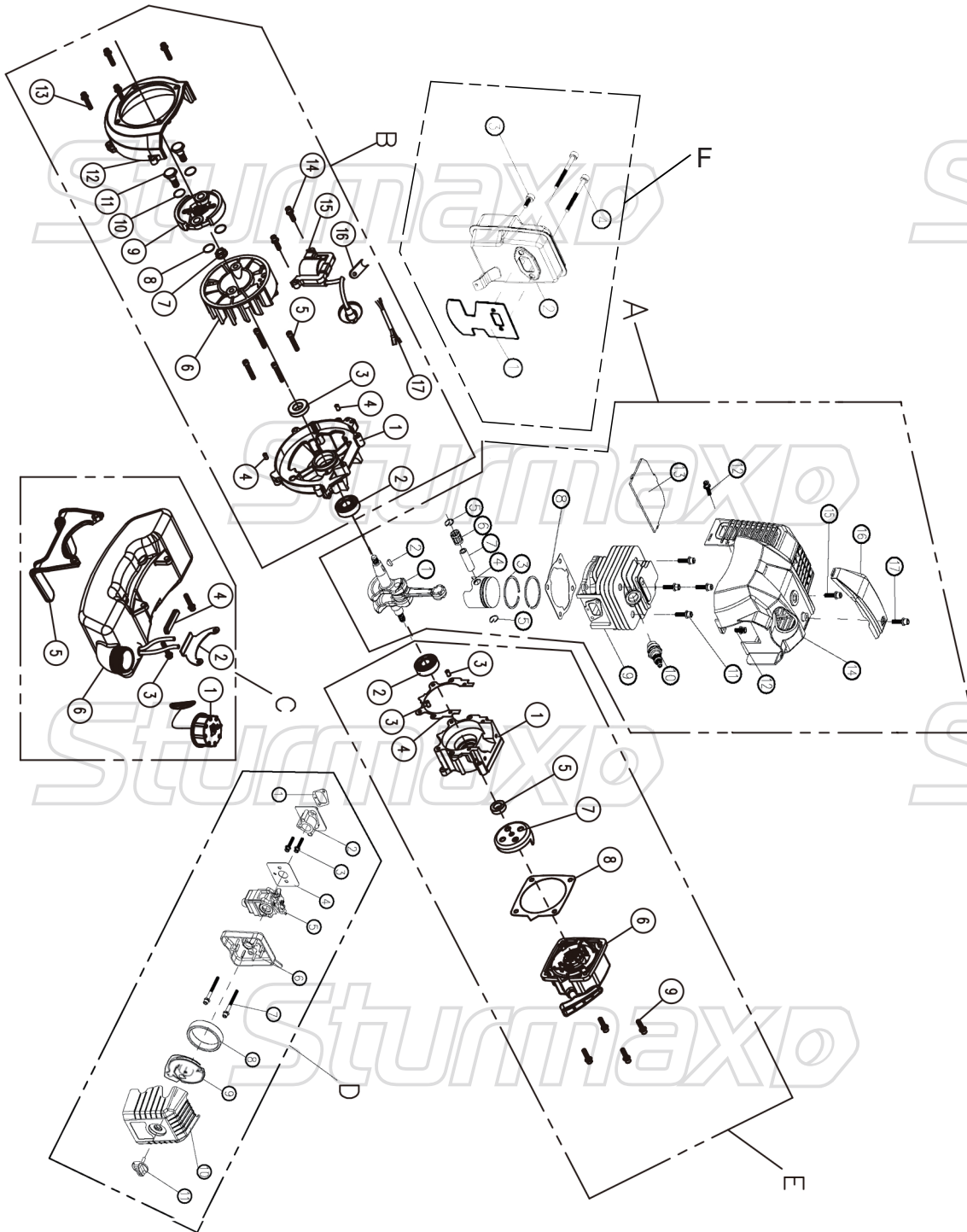
NO.	DESCRIPTION	NO.	DESCRIPTION
1	CLUTCH CASE ASSY	17	BEARING
2	BELT	18	NYLON CUTTER
3	LIFTING RING(BIG)	19	SCREW M6*30 (BUILT-UP)
4	LIFTING RING(SMALL)	20	SCREW M6*20 (BUILT-UP)
5	SWITCH ASSY	21	SCREW M5*14 (BUILT-UP)
6	LEFT HANDLE	22	SCREW M5*20 (BUILT-UP)
7	HANDLE SCREW	23	NUT M5
8	SPRING	24	SCREW M6*25 (BUILT-UP)
9	HANDLE HOLDER(1)	25	SCREW M5*25(BUILT-UP)
10	SHAFT PIPE	26	HANDLE HOLDER(2)
11	PROTECTOR HOLDER	27	HANDLE HOLDER(3)
12	GEAR BOX ASSY	28	HANDLE HOLDER(4)
13	3T BLADE	29	CUTTING KNIFE
14	PROTECTOR	30	SCREW ST4.2*8
15	PROTECTOR SEAT	31	SWITCH ALU PIPE
16	TRANSMISSION SHAFT	32	LEFT HANDLE ALU PIPE

BTM8943 BTM8952-EX-UKW231225BT

SturmaxD

SturmaxD

БЕНЗОДВИГАТЕЛЬ ДЛЯ ВТМ8943 ВТМ8952



Area A

NO.	DESCRIPTION
1	CRANKSHAFT
2	PIN
3	PISTON RING
4	PISTON
5	PISTON PIN SPRING
6	BEARING
7	PISTON PIN
8	CYLINDER GASKET
9	CYLINDER
10	SPARK PLUG
11	SCREW
12	SCREW
13	CYLINDER COVER BOARD
14	CYLINDER COVER
15	SCREW
16	TOP COVER
17	SCREW

Area B

NO.	DESCRIPTION
1	CRANKSHAFT CASE(LEFT)
2	BEARING 6202
3	OIL SEAL15*30*7
4	PIN $\phi 5 \times 10$
5	SCREW M5*35
6	FLYING WHEEL
7	SCREW M8*1
8	GASKET 8
9	CLUTCH ASSY
10	GASKET 10
11	SCREW M8*9.8*24
12	SIDE COVER
13	SCREW M5*25
14	SCREW M5*20
15	COIL
16	COIL WIRE RUBBER
17	SHUT-DOWN WIRE

Area C

NO.	DESCRIPTION
1	TANK LID ASSY
2	TANK HOLDER
3	SCREW M5*20
4	TANK HOLDER SHOCK REDUCER
5	TANK PROTECTOR
6	TANK ASSY

Area D

NO.	DESCRIPTION
1	INLET PIPE GASKET
2	INLET PIPE
3	SCREW
4	CARBURETOR GASKET
5	CARBURETOR
6	AIR FILTER STANDER
7	SCREW
8	AIR FILTER SPONGE
9	AIR FILTER SPONGE COVER
10	AIR FILTER COVER
11	AIR FILTER COVER NUT

Area E

NO.	DESCRIPTION
1	CRANKSHAFT CASE (RIGHT)
2	BEARING 6202
3	PIN $\phi 5 \times 10$
4	GASKET
5	OIL SEAL 12*22*7
6	DRIVE PLATE(EASY)
7	STARTER GASKET
8	STARTER (EASY)
9	SCREW M5*20

Area F

NO.	DESCRIPTION
1	GASKET
2	MUFFLER
3	SCREW
4	SCREW

BTM8943 BTM8952-EX-UKW231225BT