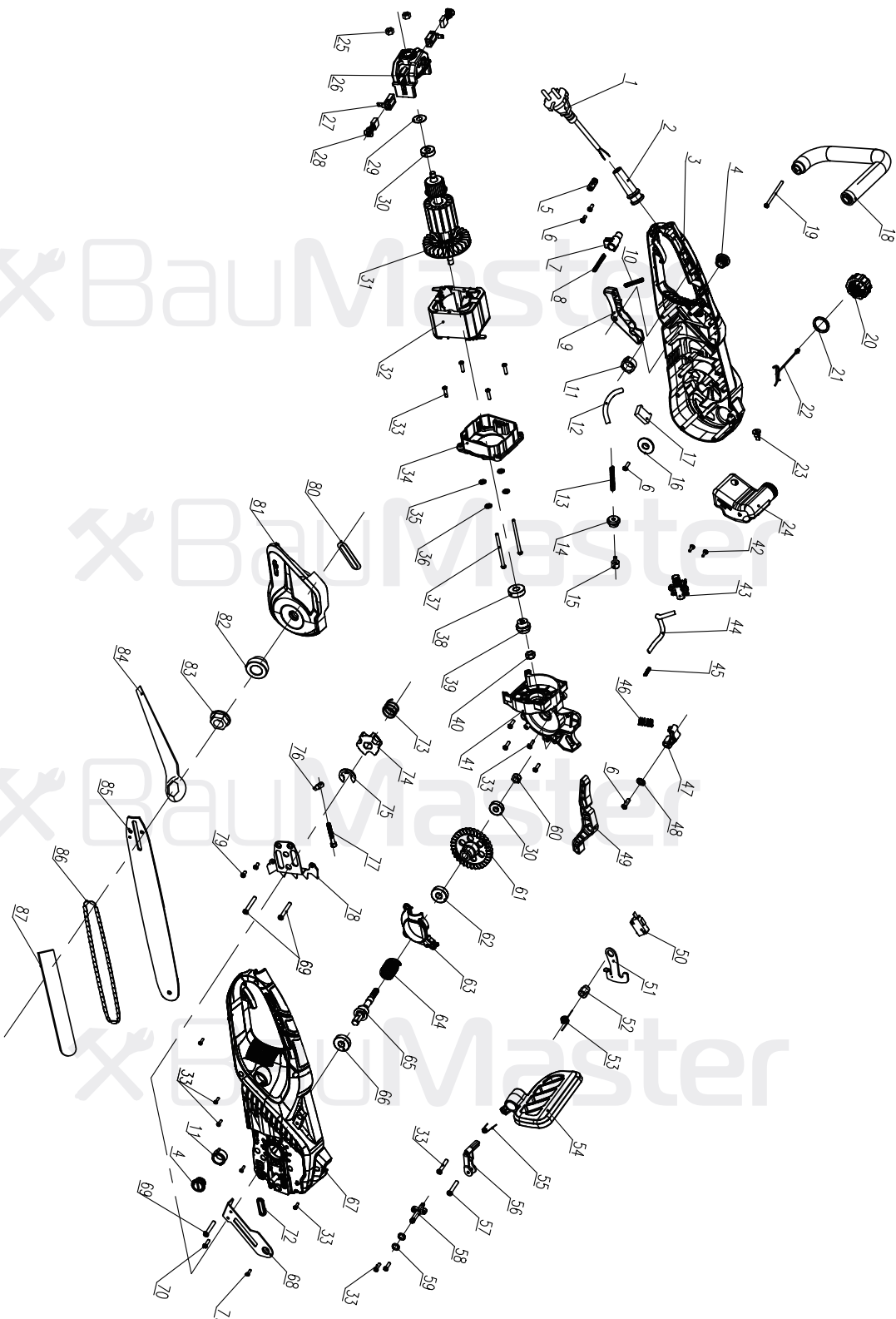


# CC-9929BE



NO.	DESCRIPTION	NO.	DESCRIPTION
1	CABLE	45	SPRING
2	CABLE PROTECTOR	46	SPRING
3	LEFT HOUSING	47	LOCK
4	BRUSH CAP	48	WASHER $\Phi 5$
5	CABLE ANCHORAGE	49	BACK PUSH ROD
6	SCREW ST4X12	50	SWITCH
7	SAFETY LOCKING BUTTON	51	BRAKE PLATE
8	SPRING	52	LOCATING SLEEVE
9	SWITCH TRIGGER	53	BRAKE PLATE TORSION SPRING
10	SPRING	54	PROTECTIVE PLATE
11	CARBON BRUSH HOLDER	55	SPRING
12	INTO TUBING	56	PUSH ROD
13	SPRING	57	SCREW ST4X40
14	SEALING RING	58	OUT OF THE NOZZLE
15	FUEL TANK JOINT	59	O-RING
16	WASHER $\Phi 4$	60	NUT M8
17	CAPACITY	61	BIG GEAR
18	AUXILIARY HANDLE	62	SHAFT SLEEVE
19	SCREW ST5X70	63	GEAR CASE COVER
20	OIL TANK COVER	64	BRAKE TORSION SPRING
21	O-RING	65	OUTPUT SHAFT
22	POTHOOK	66	BEARING 6000RS
23	CHECK VALVE	67	RIGHT HOUSING
24	OIL TANK	68	HANDLE RETAINING PLATE
25	NUT M4	69	SCREW ST4X40
26	MOTOR BACK BRACKET	70	SCREW ST4X20
27	BRUSH HOLDER	71	SCREW ST4X25
28	CARBON BRUSH	72	RUBBER RING
29	CORRUGATED GASKET	73	SPRING
30	BEARING 608Z	74	CHAIN WHEEL
31	ROTOR	75	CIRCLIP $\Phi 7$
32	STATOR	76	TENSIONING BLOCK
33	SCREW ST4X16	77	TENSIONING SCREW M5X45
34	MOTOR FRONT BRACKET	78	BUMPER SPIKE
35	SPRING WASHER $\Phi 4$	79	SCREW ST4X12
36	WASHER $\Phi 4$	80	RUBBER RING
37	SCREW M4X67	81	CHAIN COVER
38	BEARING 6000Z	82	LOCATING SLEEVE
39	PINION GEAR	83	NUT M8
40	NUT M6	84	WRENCH
41	GEAR BOX	85	GUIDE BAR
42	SCREW ST3X8	86	CHAIN
43	OIL PUMP COMPONENTS	87	SCABBARD
44	OUT TUBING		