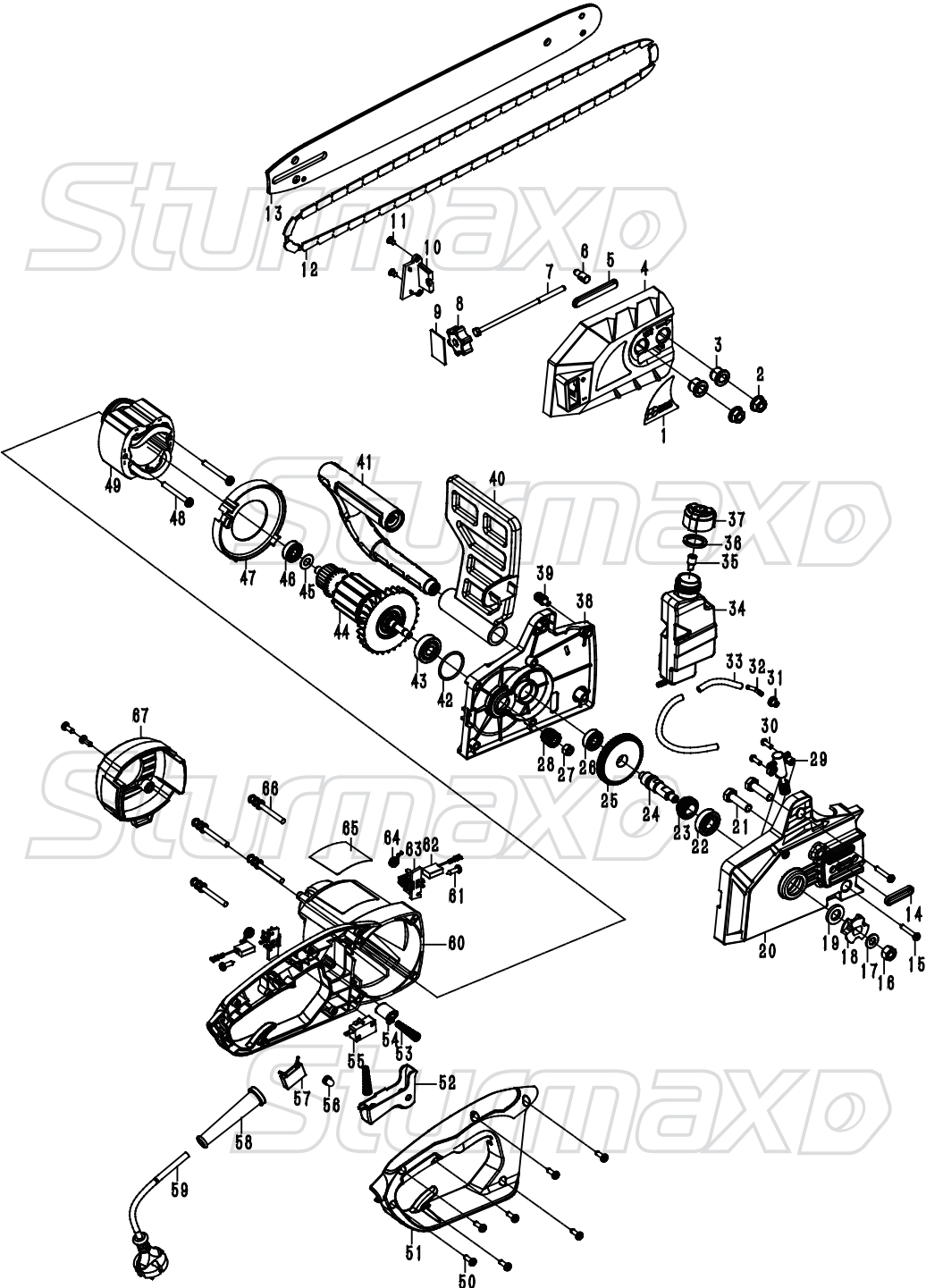


# CCM9918



NO.	DESCRIPTION	NO.	DESCRIPTION
1	LEBAL	35	SEALING RING OF OIL POT
2	NUT M8	36	RESPIRATOR
3	PRESSING SLEEVE	37	OIL POT LID
4	SPROCKET COVER PLATE	38	MIDDLE COVER
5	OIL PROOF PAD	39	SCREW M5X18
6	GUIDE PLATE ADJUSTING PIN	40	BAFFLE
7	BOLT M5X135	41	FRONT HANDLE
8	ADJUSTING KNOB	42	O-RING 32X2
9	SQUARE GASKET	43	BEARING 6200-2RS
10	ADJUSTING KNOB PRESSING PLATE	44	ROTOR
11	SCREW ST4.2X14	45	GASKET $\Phi$ 8X $\Phi$ 17X0.5
12	CHAIN	46	BEARING 608-2RS
13	GUIDE PLATE	47	WINDSHIELD
14	RING WASHER	48	SCREW ST4X55
15	SCREW ST5 $\times$ 40	49	STATOR
16	HEXAGON NUT M8 - LEFT	50	SCREW ST4X14
17	FLAT WASHER $\Phi$ 8.5X $\Phi$ 16X1.5	51	HANDLE COVER
18	SPROCKET	52	SWITCH TRIGGER
19	FLAT GASKET $\Phi$ 22X $\Phi$ 12X3.5	53	SWITCH TRIGGER SPRING
20	GEARBOX	54	SWITCH SELF-LOCKING BUTTON
21	HEXAGON BOLT M8X30	55	MICROSWITCH
22	BEARING 6001-2RS	56	WIRING CAP
23	WORM	57	CAPACITANCE 0.22
24	OUTPUT SHAFT	58	SHEATH
25	BIG GEAR WHEEL	59	CABLE
26	BEARING 608-ZZ	60	HOUSING
27	HEXAGON NUT M7	61	SCREW ST4X12
28	PINION	62	CARBON BRUSH
29	OIL PUMP ASSEMBLY	63	BRUSH HOLDER
30	SCREW M4X12	64	COIL SPRING
31	OIL PROOF SLEEVE	65	NAMEPLATE
32	OUTLET NOZZLE	66	SCREW M5X50
33	TUBING	67	REAR COVER
34	OIL POT		