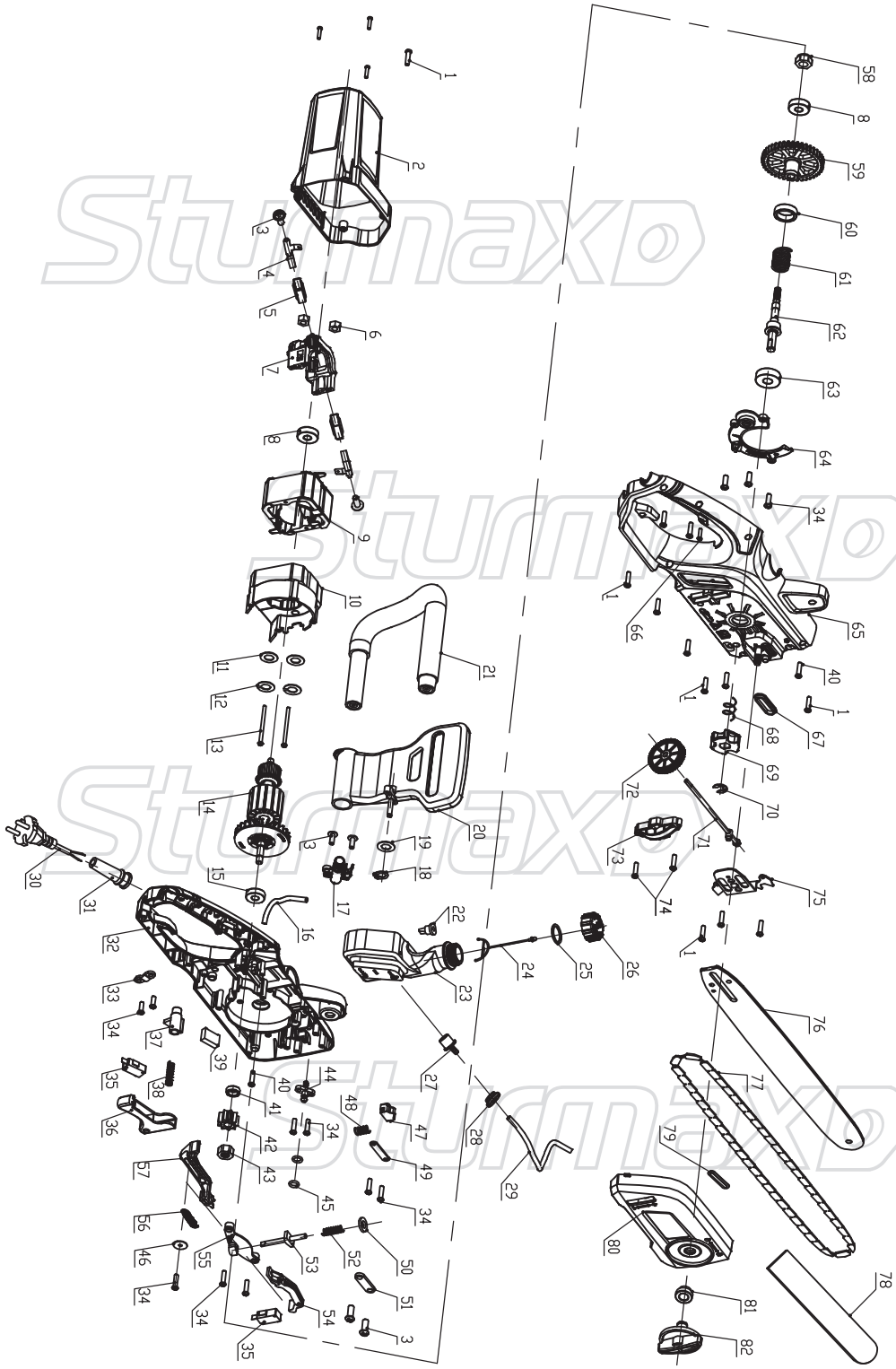


CCM9924



NO.	DESCRIPTION	NO.	DESCRIPTION
1	SCREW ST4X16	42	PINION GEAR
2	REAR COWL	43	NUT M8
3	SCREW ST3X8	44	OIL NOZZLE
4	CARBON BRUSH	45	O-RING
5	BRUSH HOLDER	46	WASHER Φ4
6	NUT M4	47	LOCK KNOB
7	MOTOR BACK BRACKET	48	SPRING
8	BEARING 608RS	49	PRESSURE PLATE 1
9	STATOR	50	WASHER Φ5
10	MOTOR FRONT BRACKET	51	PRESSURE PLATE 2
11	WASHER Φ4	52	SPRING
12	SPRING WASHER Φ4	53	BRAKE LEVER
13	NON-STANDARD SCREW M4X51	54	CONNECTING ROD
14	ROTOR	55	BRAKE FIXING PLATE
15	BEARING 6000RS	56	TENSION SPRING
16	TUBING 1	57	PUSH ROD
17	OIL PUMP COMPONENTS	58	NUT M8
18	CIRCLIP Φ6	59	BIG GEAR
19	WASHER Φ6	60	SHAFT SLEEVE
20	PROTECTIVE PLATE	61	BRAKE TORSION SPRING
21	AUXILIARY HANDLE	62	OUTPUT SHAFT
22	CHECK VALVE	63	BEARING 6000RS
23	OIL TANK	64	GEAR CASE COVER
24	POTHOOK	65	RIGHT HOUSING
25	O-RING	66	SCREW ST3X12
26	OIL TANK COVER	67	RUBBER RING
27	FUEL TANK JOINT	68	SPRING
28	SEALING RING	69	CHAIN WHEEL
29	TUBING 2	70	CIRCLIP Φ7
30	CABLE	71	TENSIONING ASSEMBLY
31	CABLE PROTECTOR	72	TENSIONING KNOB
32	LEFT HOUSING	73	FIXED SEAT
33	CABLE ANCHORAGE	74	SCREW ST4X20
34	SCREW ST4X12	75	BUMPER SPIKE
35	SWITCH	76	GUIDE BAR
36	SWITCH TRIGGER	77	CHAIN
37	SAFETY LOCKING BUTTON	78	SCABBARD
38	SPRING	79	SEALING RING
39	CAPACITOR	80	CHAIN COVER
40	SCREW ST5X30	81	LOCATING SLEEVE
41	SHAFT SLEEVE	82	COMPRESS KNOB

ST-UK240704