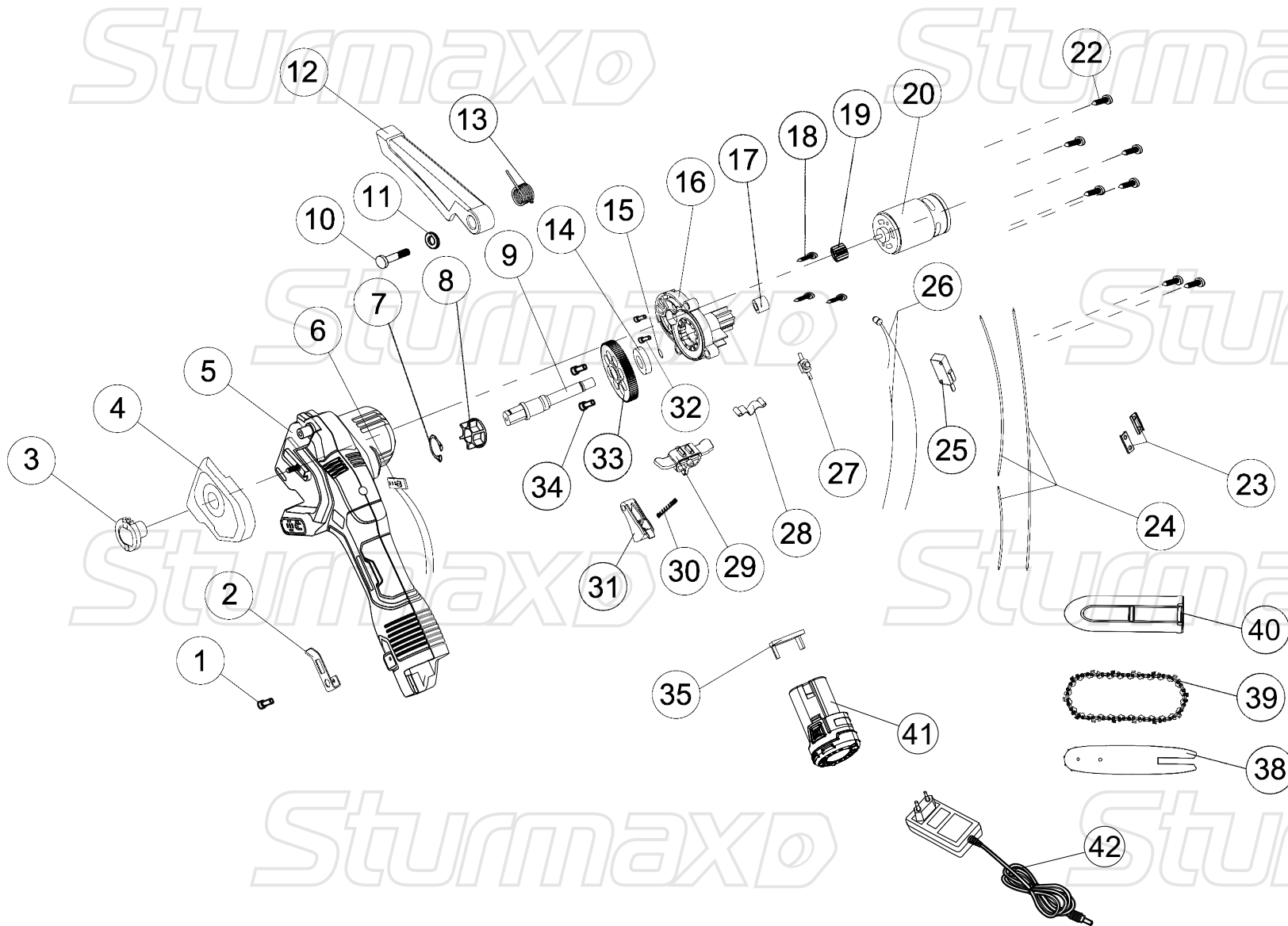


## CCM9912CLS



NO.	DESCRIPTION
1	SCREW
2	HOOK
3	LOCK SCREW NUT
4	LEFT SDIE COVER
5	HOUSE
6	POWER DISPLAY CIRCUIT BOARD
7	JUMP RING
8	SPROCKET
9	OUTPUT SHAFT
10	SCREW
11	SHIM
12	PROTECTOR
13	SPRING
14	BEARING 6900ZZ
15	JUMP RING
16	MOTOR HOLDER
17	BEARING HK0608
18	SCREW
19	MOTOR GEAR
20	MOTOR
22	SCREW
23	LOCK BOARD
24	WIRE
25	SWITCH
26	LIGHT
27	LIGHT SWITCH
28	SPRING
29	TRIGGER CONTROLLER
30	TRIGGER SPRING
31	TRIGGER
32	SCREW
33	REDUCER GEAR
34	SCREW
35	BATTERY CONNECTOR
38	BAR
39	CHAIN
40	BAR COVER
41	BATTERY PACK
42	CHARGER