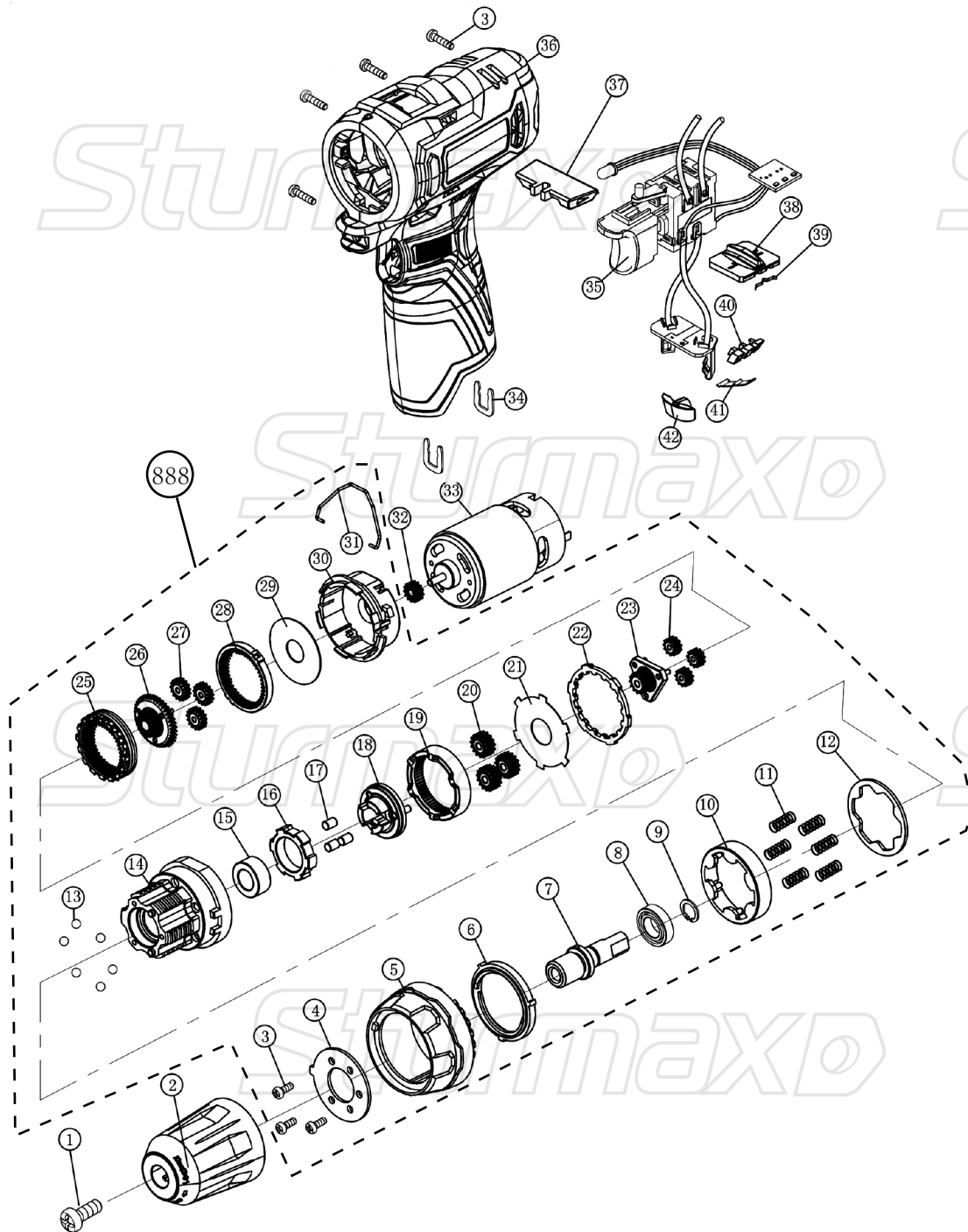


CDM3212CL



NO.	DESCRIPTION	NO.	DESCRIPTION
1	Screw M6x18	23	Center part
2	Chuck	24	Second gear
3	Screw ST2.9x16	25	Adjusting speed gear
4	Pressing board	26	Connecting gear
5	Torque cover	27	First gear
6	Inner screw sleeve	28	First gear ring
7	Output shaft	29	Washer
8	Bearing 6800	30	Gear box
9	Circle $\varnothing 10$	31	Spring hook
10	Torque ring	32	Motor gear
11	Spring	33	Motor
12	Washer	34	U-Clip
13	Steel ball $\varnothing 4.5$	35	Switch
14	Gear box	36	Housing
15	Bearing 6800	37	Switch bar
16	Spindle lock	38	Speed bush
17	Pin	39	Spring pick
18	Gear frame	40	Battery power cover
19	Inside gear ring	41	Torpue spring pick
20	Third gear	42	LED cover
21	Washer	888	Gear box assemble
22	Position circle		

CDM3212CL-EX-UKW230707