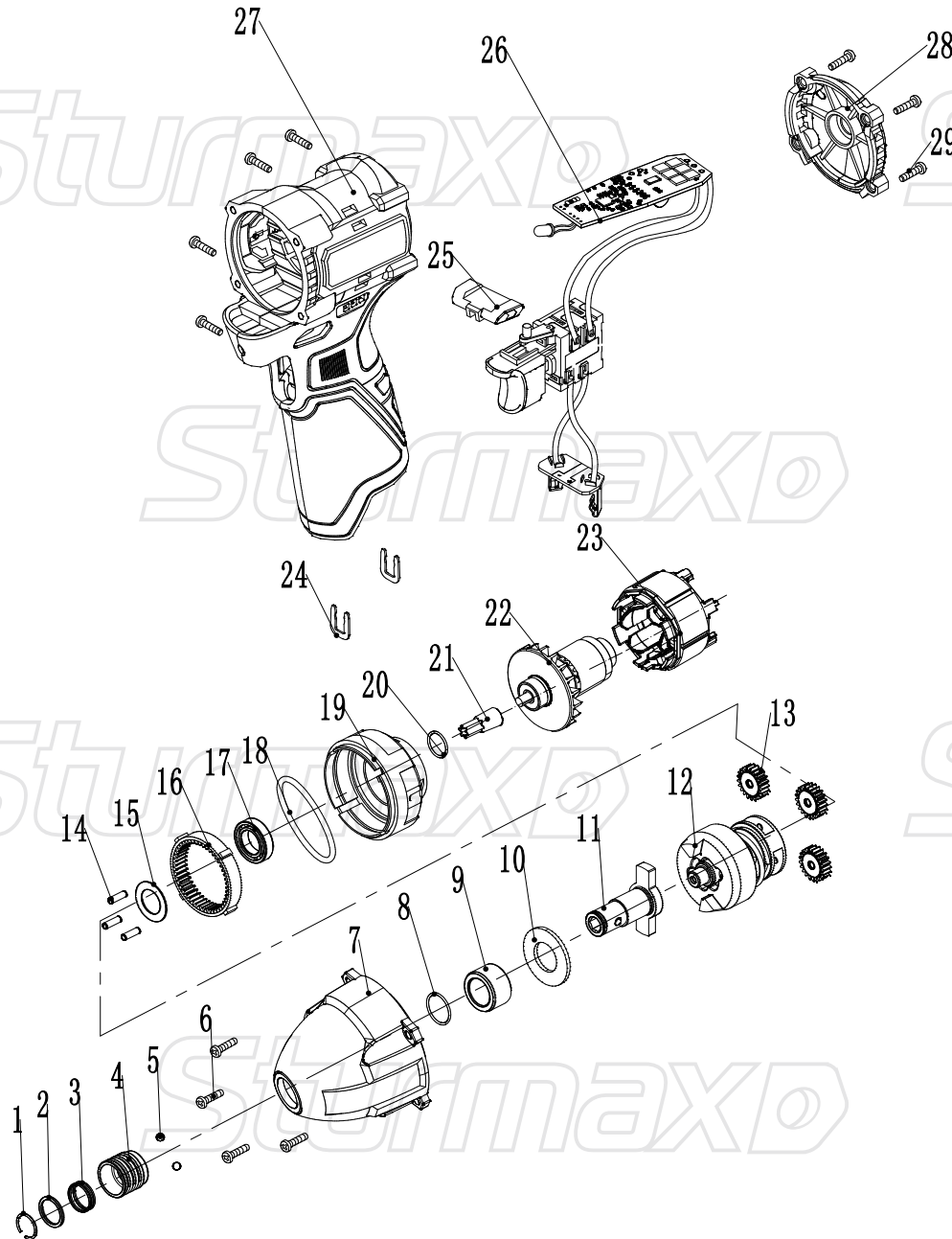


CDM3212CLBS



NO.	DESCRIPTION
1	Circlip
2	Gasket
3	Spring
4	Change sleeve
5	Steel ball Ø3.5
6	Screw ST4x18
7	Head cap
8	O-Ring Ø18x2
9	Shaft bush
10	Grommet
11	Output shaft
12	Impact component
13	Planetary gear
14	Pin
15	Gasket
16	Inner gear ring
17	Bearing 6901
18	O-Ring Ø43x1
19	Gear box
20	O-Ring Ø15x1
21	Motor gear
22	Brushless rotor
23	Brushless stator
24	U-Shaped buckle
25	Reversing lever
26	Switch assembly
27	Housing
28	Rear cover
29	Screw ST3x14