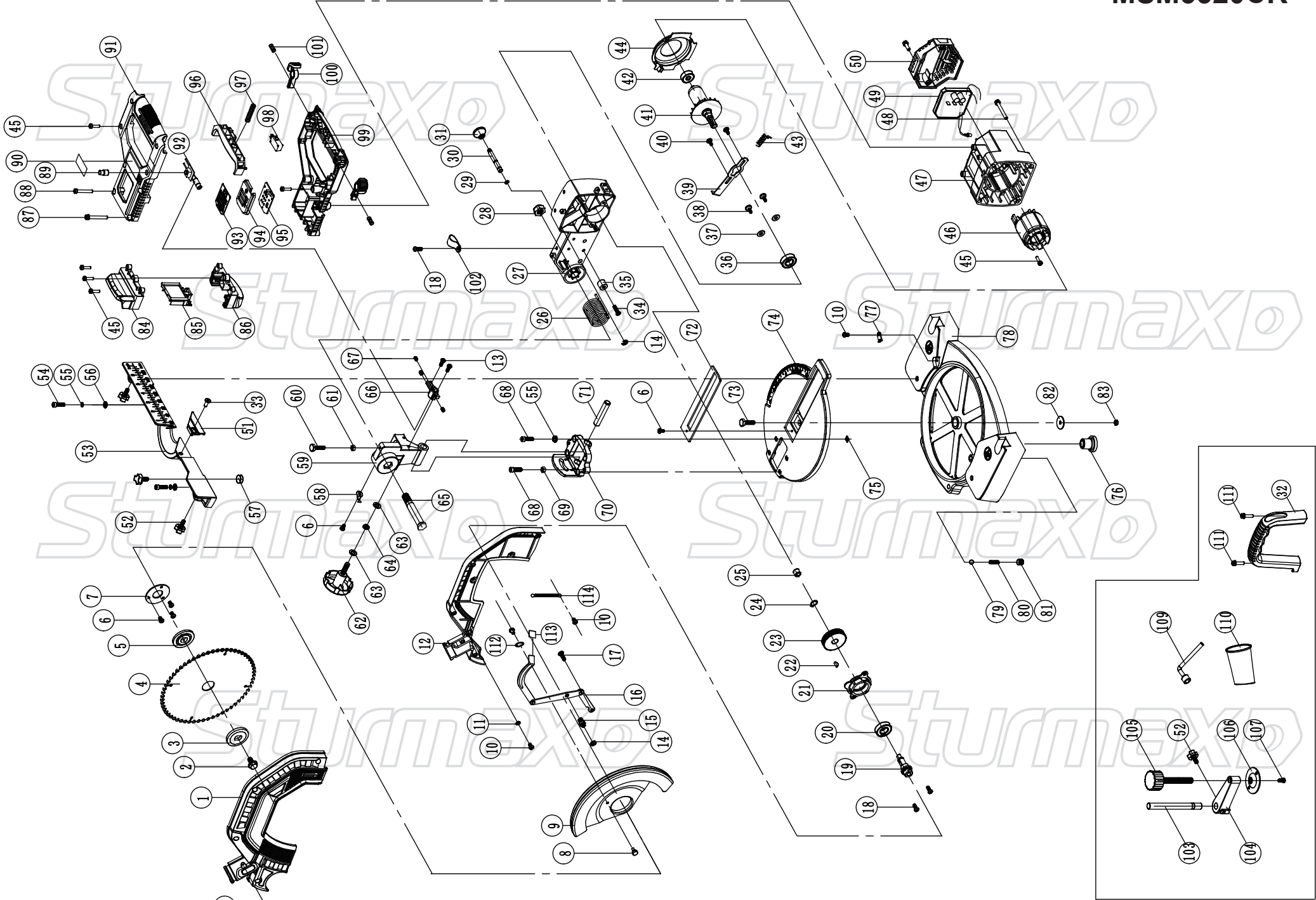


MSM5520CR



## MSM5520CR

NO.	DESCRIPTION	NO	DESCRIPTION	NO	DESCRIPTION
1	GEAR HOUSING COVER	39	SELF LOCK	77	TRANSPARENT INDICATOR
2	HEX BOLT M8X16	40	SCREW M4X12	78	ALUMINUM BASE
3	OUTER FLANGE	41	ROTOR	79	BALL Ø7.9
4	BLADE	42	BALL BEARING 607RS	80	SPRING
5	INNER FLANGE	43	SELF-LOCKING SPRING	81	HEX HEAD SCREW M10X10
6	CROSS SCREW M4X8	44	WIND SHIELD	82	FLAT WASHERφ22Xφ6.5X2
7	BEARING COVER	45	TAPPING SCREW ST4*16	83	LOCK NUT M6
8	SCREW	46	STATOR	84	TOP CLIP
9	BLADE GUARD	47	MOTOR HOUSING	85	PIN
10	CROSS SCREW M4X10	48	CROSS SCREW M5X40	86	BOTTOM CLIP
11	SPRING WASHER Ø4	49	CONTROLLER	87	CROSS SCREW M5X40
12	GEAR HOUSING	50	REAR COVER	88	CROSS SCREW ST5*32
13	CROSS SCREW M4X12	51	SLIDE PLATE	89	BUTTON
14	RETAINER RING Ø12XØ6X1	52	PLASTIC HEAD SCREW M6×30	90	LABEL
15	RETAINING SCREW M8	53	CROSS BAR	91	UPPER HANDLE
16	CONNECTING ROD	54	HEX SCREW M6X30	92	LASER PCB BOARD
17	NON STANDARD CROSS SCREW M5X18	55	SPRING WASHER φ6	93	DISPLAYER LABEL
18	CROSS SCREW M5X12	56	FLAT WASHER Ø6	94	DISPLAYER COVER
19	SPINDLE	57	PLASTIC ROUND PIECE Ø17X4	95	DISPLAYER
20	BALL BEARING 6002-2RS/SYBS	58	IRON POINTER	96	SWITCH TRIGGER
21	FRONT COVER	59	HOLDER	97	SWITCH SPRING
22	WOODRUFF KEY 4XØ13	60	TAPPING SCREW M5X15	98	MICROSWITCH
23	GEAR	61	HEX NUT M5	99	LOWER HANDLE
24	RETAINER RING Ø12	62	PLASTIC LOCKING SCREW	100	SWITCH LOCK
25	NEEDLE BEARING Ø810	63	WASHER Ø8	101	SMALL SPRING
26	TORSIONAL SPRING	64	SPRING WASHER φ8	102	CABLE CLIP
27	ROCKER ARM	65	HOLDER CONNECTING PIN	103	CLAMP PIN
28	LOCKING HEX NUT M12	66	LASER SEAT	104	CLAMP
29	O-RING	67	HEX SCREW M4X6	105	PLASTIC HANDLE SCREW
30	LOCK LEVER	68	HEX SCREW M6X16	106	PRESS PIECE
31	PLASTIC NUT M6	69	HEX NUT M6	107	CROSS SCREW M5X8
32	HANDLE	70	SUPPORT	109	SPANNER M8
33	SCREW M6*12	71	SUPPORT MOVABLE PIN	110	DUST BAG
34	CROSS SCREW M6*12	72	PLASTIC BAFFLE	111	CROSS SCREW M5X20
35	LIMIT RUBBER COLUMN	73	HEX BOLT M6X25	112	WASHER φ5*φ18*1
36	BALL BEARING 6001RS	74	BASE	113	SELF LOCK SLEEVE
37	FLAT WASHER φ6Xφ16X1	75	SQUARE NUT M6	114	TENSION SPRING
38	SCREW M4X10	76	RUBBER FEET		

ST-UK240828