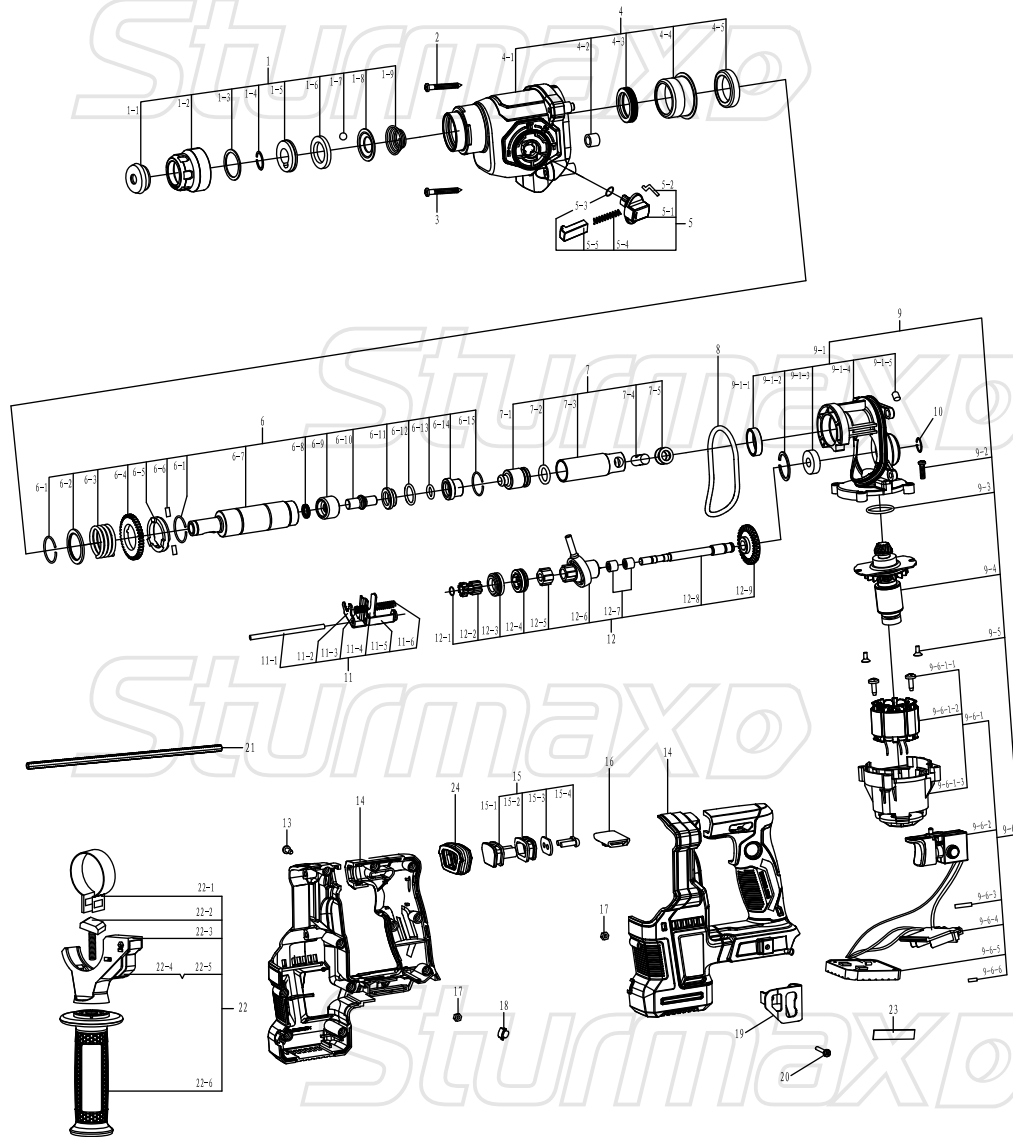


RHM2502CR



| NO. | DESCRIPTION | NO. | DESCRIPTION | NO. | DESCRIPTION |
|------|--------------------------|---------|----------------------|------|------------------------|
| 1 | PROTECTION SLEEVE ASSY | 6-13 | O-RING | 11-5 | SHIFTING GEAR UNIT 2 |
| 1-1 | PROTECTION CAP | 6-14 | DAMPING BUSHING | 11-6 | SPRING |
| 1-2 | PROTECTION SLEEVE | 6-15 | CIRCLIP | 12 | MIDDLE SHAFT ASSY |
| 1-3 | WASHER | 7 | CYLINDER ASSY | 12-1 | CIRCLIP |
| 1-4 | CIRCLIP | 7-1 | PISTON | 12-2 | MIDDLE GEAR |
| 1-5 | CIRCLIP | 7-2 | O-RING | 12-3 | CLUTCH 1 |
| 1-6 | WASHER | 7-3 | CYLINDER | 12-4 | CLUTCH 2 |
| 1-7 | STEEL BALL Ø7.14 | 7-4 | PIN | 12-5 | MIDDLE SHAFT SLEEVE |
| 1-8 | WASHER | 7-5 | WASHER | 12-6 | ROCKER BEARING |
| 1-9 | SPRING | 8 | O-RING | 12-7 | NEEDLE BEARING HK0812 |
| 2 | SCREW ST4.8×40 | 9 | MOTOR ASSY | 12-8 | MIDDLE SHAFT |
| 3 | SCREW ST4.8×50 | 9-1 | BRACKET ASSY | 12-9 | BEVEL GEAR |
| 4 | GEAR HOUSING ASSY | 9-1-1 | BUSHING | 13 | SCREW ST3.9×16 |
| 4-1 | GEAR HOUSING | 9-1-2 | BEARING 609 | 14 | HOUSING |
| 4-2 | NEEDLE BEARING HK0709 | 9-1-3 | CIRCLIP | 15 | DAMPING SEAT ASSY |
| 4-3 | OIL SEAL | 9-1-4 | BRACKET | 15-1 | DAMPING SEAT 1 |
| 4-4 | BEARING SLEEVE | 9-1-5 | WOOL FELT | 15-2 | DAMPING SEAT 2 |
| 4-5 | OIL-CONTAINING BEARING | 9-2 | SCREW ST3.9×20 | 15-3 | DAMPING WASHER |
| 5 | MODEL SELECTOR KNOB ASSY | 9-3 | O-RING | 15-4 | SCREW ST4.2×13 |
| 5-1 | MODEL SELECTOR KNOB | 9-4 | ROTOR ASSY | 16 | FORWARD/REVERSE BUTTON |
| 5-2 | MODEL SELECTOR IRON CORE | 9-5 | BOLT M4X6 | 17 | NUT |
| 5-3 | O-RING | 9-6 | STATOR+SWITCH ASSY | 18 | LEDLIGHT COVER |
| 5-4 | SPRING | 9-6-1 | STATOR ASSY | 19 | HOOK |
| 5-5 | LOCKING BUTTON | 9-6-1-1 | SCREW ST4×12 | 20 | BOLT M4X12 |
| 6 | ROTARY SLEEVE ASSY | 9-6-1-2 | STATOR | 21 | DEPTH RULER |
| 6-1 | CIRCLIP | 9-6-1-3 | MOTOR HOUSING | 22 | AUXILIARY HANDLE ASSY |
| 6-2 | WASHER | 9-6-2 | SWITCH | 22-1 | CLAMPING BAND |
| 6-3 | SPRING | 9-6-3 | HEAT SHRINK TUBING | 22-2 | T- BOLT |
| 6-4 | BIG GEAR | 9-6-4 | CONNECTION FOOT | 22-3 | CLAMP HOLDER |
| 6-5 | CLUTCH DISK | 9-6-5 | MOTOR PCB | 22-4 | CLAMP |
| 6-6 | PIN | 9-6-6 | COPPER SNAP FASTENER | 22-5 | SPRING |
| 6-7 | ROTARY SLEEVE | 10 | CIRCLIP | 22-6 | AUXILIARY HANDLE |
| 6-8 | OIL SEAL | 11 | SHIFTING GEAR ASSY | 23 | EVA FOAM TAPE |
| 6-9 | THRUST RING | 11-1 | PIN | 24 | DAMPING SEAT COVER |
| 6-10 | IMPACT ROD | 11-2 | PRESSING PARTS | | |
| 6-11 | GUIDE BUSHING | 11-3 | SPRING | | |
| 6-12 | O-RING | 11-4 | SHIFTING GEAR UNIT 1 | | |