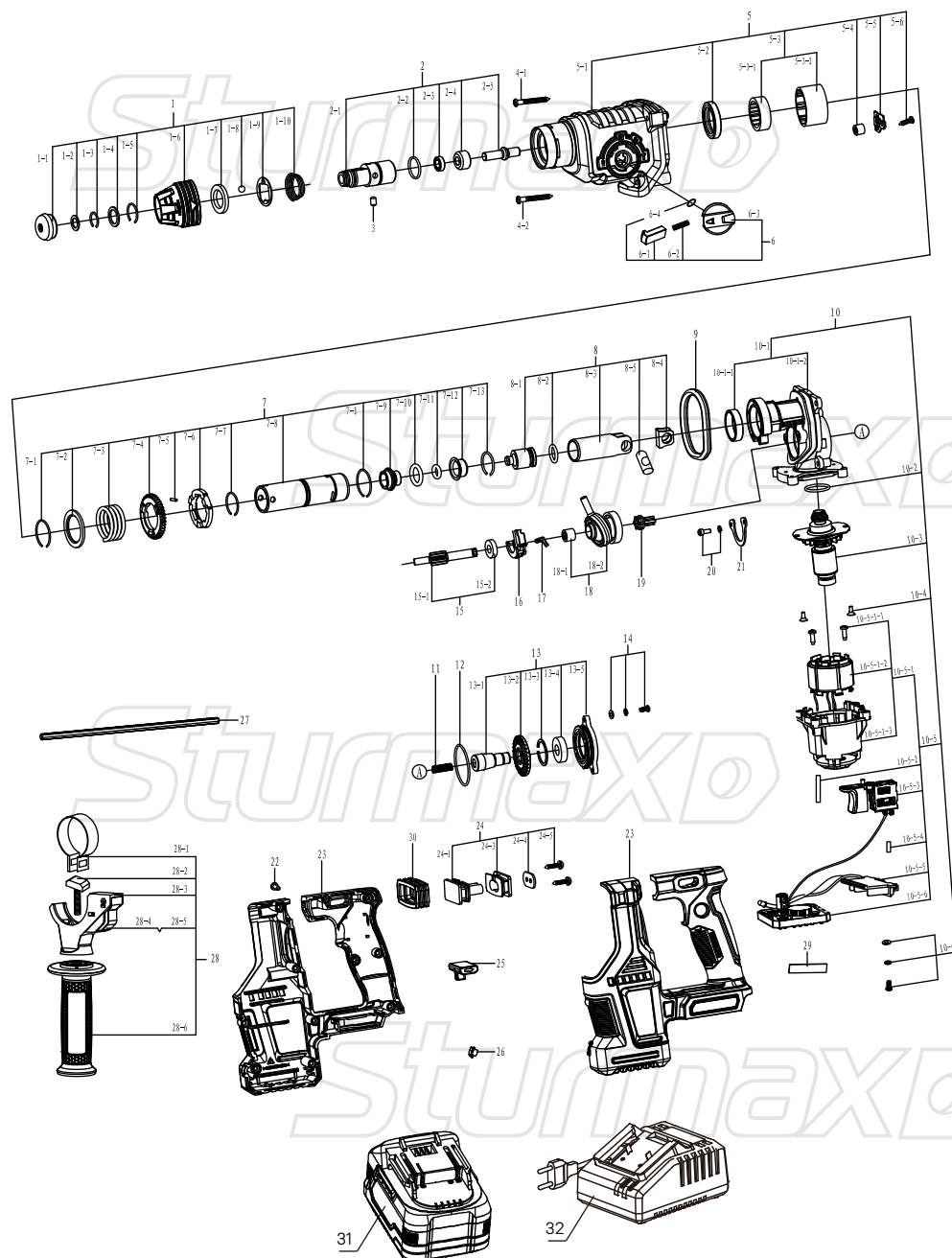


RHM2503CR



NO.	DESCRIPTION	NO.	DESCRIPTION	NO.	DESCRIPTION
1	PROTECTION SLEEVE ASSY	7-4	BIG GEAR	13-1	SHAFT
1-1	PROTECTION CAP	7-5	PIN	13-2	BEVEL GEAR
1-2	WASHER	7-6	CLUTCH DISK	13-3	CIRCLIP Ø28
1-3	CIRCLIP	7-7	CIRCLIP	13-4	BEARING 6001RS
1-4	LOCATION RING	7-8	ROTARY SLEEVE	13-5	BRACKET COVER
1-5	CIRCLIP 19×2	7-9	GUIDE BUSHING	14	BOLT M4X16
1-6	PROTECTION SLEEVE	7-10	O-RING	15	MIDDLE GEAR ASSY
1-7	WASHER	7-11	O-RING	15-1	MIDDLE GEAR
1-8	STEEL BALL Ø7.14	7-12	DAMPING BUSHING	15-2	BEARING 699
1-9	WASHER	7-13	CIRCLIP	16	SHIFT FORK
1-10	SPRING	8	CYLINDER ASSY	17	SNAP RING
2	DRILL SLEEVE ASSY	8-1	PISTON	18	ROCKER BEARING ASSY
2-1	DRILL SLEEVE	8-2	O-RING	18-1	NEEDLE BEARING HK0908
2-2	O-RING	8-3	CYLINDER	18-2	ROCKER BEARING
2-3	OIL SEAL	8-4	WASHER	19	CLUTCH
2-4	THRUST RING	8-5	PIN	20	BOLT M4X12
2-5	IMPACT ROD	9	O-RING	21	PRESSURE PLATE
3	PIN	10	MOTOR ASSY	22	SCREW ST3.9×16
4-1	SCREW ST4.8×45	10-1	BRACKET ASSY	23	HOUSING
4-2	SCREW ST4.8×63	10-1-1	BUSHING	24	DAMPING SEAT ASSY
5	GEAR HOUSING ASSY	10-1-2	BRACKET	24-1	DAMPING SEAT 1
5-1	GEAR HOUSING	10-2	O-RING	24-2	DAMPING SEAT 2
5-2	OIL SEAL	10-3	ROTOR ASSY	24-3	DAMPING WASHER
5-3	BEARING SLEEVE ASSY	10-4	BOLT M4X6	24-4	SCREW ST4.2×13
5-3-1	NEEDLE BEARING HK3012	10-5	STATOR+SWITCH ASSY	25	FORWARD/REVERSE BUTTON
5-3-2	BEARING SLEEVE	10-5-1	STATOR ASSY	26	LEDLIGHT COVER
5-4	NEEDLE BEARING HK0709	10-5-1-1	SCREW ST4×12	27	DEPTH RULER
5-5	WASHER	10-5-1-2	STATOR	28	AUXILIARY HANDLE ASSY
5-6	SCREW ST4.2×13	10-5-1-3	MOTOR HOUSING	28-1	CLAMPING BAND
6	MODEL SELECTOR KNOB ASSY	10-5-2	HEAT SHRINK TUBING	28-2	T- BOLT
6-1	LOCKING BUTTON	10-5-3	SWITCH	28-3	CLAMP HOLDER
6-2	SPRING	10-5-4	COPPER SNAP FASTENER	28-4	CLAMP
6-3	MODEL SELECTOR KNOB	10-5-5	CONNECTION FOOT	28-5	SPRING
6-4	O-RING	10-5-6	MOTOR PCB	28-6	AUXILIARY HANDLE
7	ROTARY SLEEVE ASSY	10-6	BOLT M4X12	29	EVA FOAM TAPE
7-1	CIRCLIP	11	SPRING	30	DAMPING SEAT COVER
7-2	WASHER	12	O-RING	31	BATTERY PACK
7-3	SPRING	13	BRACKET COVER ASSY	32	CHARGER