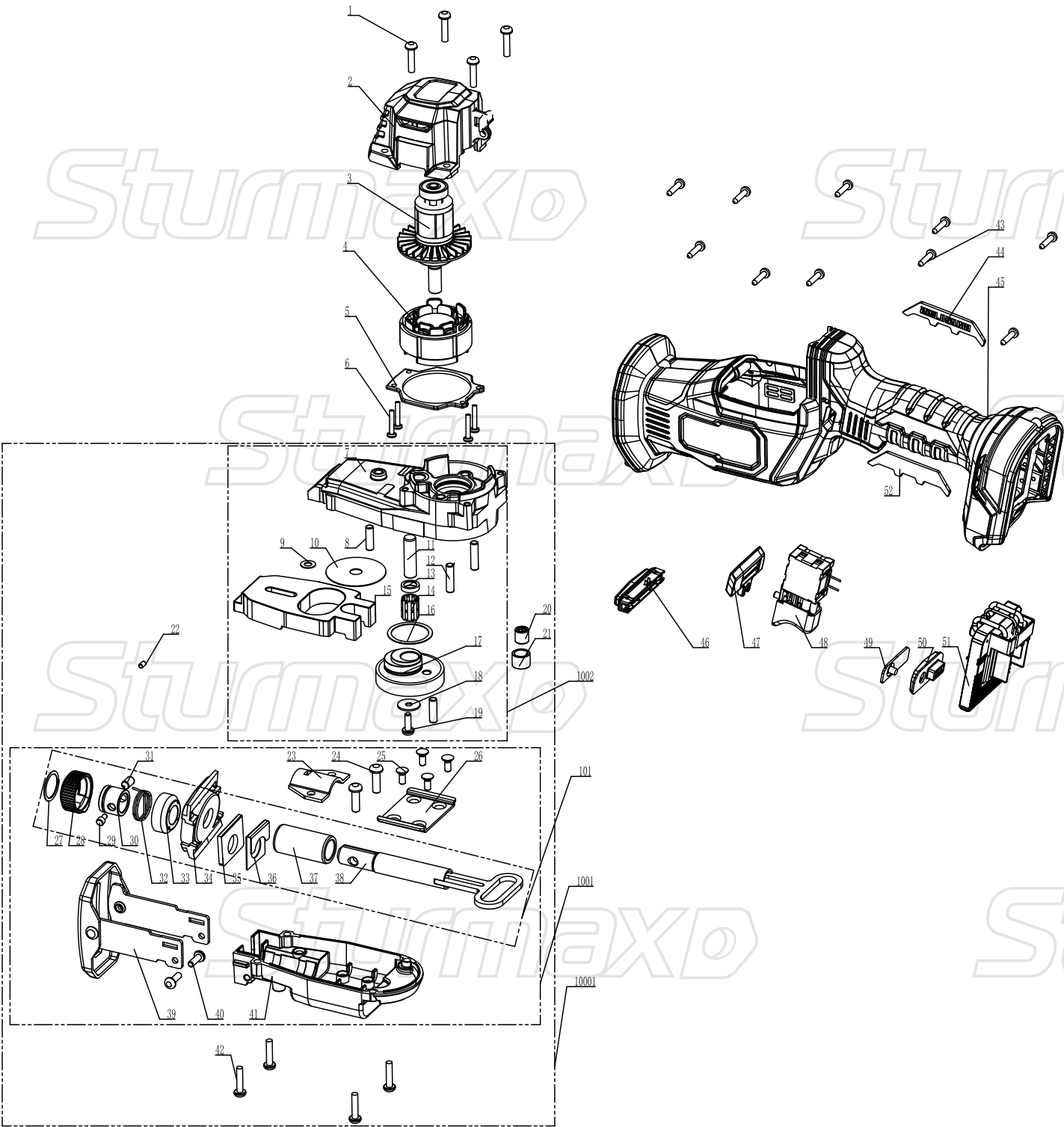


RSM8802CRB



NO.	DESCRIPTION
1	TORX PAN HEAD TAPPING SCREW
2	MOTOR HOUSING CANISTER
3	BLDC MOTOR ROTOR
4	BLDC MOTOR STATOR
5	STATOR AXIAL RETAINING PLATE
6	PHILLIPS PAN HEAD SELF-TAPPING SCREW
7	UPPER GEARBOX HOUSING
8	LIMIT DOWEL PIN
9	SHIM WASHER #1
10	SHIM WASHER #2
11	GEAR SHAFT
12	LIMIT DOWEL PIN
13	NEEDLE BEARING SNAP RING
14	NEEDLE BEARING
15	BALANCE WEIGHT
16	SHIM WASHER #3
17	HELICAL GEAR
18	SHIM WASHER #4
19	HEX SOCKET LARGE PAN HEAD SCREW
20	NEEDLE ROLLER BEARING
21	NEEDLE ROLLER SLEEVE
22	NEEDLE ROLLER
23	BUSHING PRESSURE PLATE
24	PHILLIPS PAN HEAD SELF-LOCKING TAPPING SCREW
25	PHILLIPS COUNTERSUNK SELF-LOCKING SCREW
26	SLIDING SLOT SUPPORT PLATE
27	CIRCLIP RETAINER
28	ROTATING SLEEVE COLLAR
29	SAW BLADE LOCATING PIN
30	SAW BLADE LOCATING PIN BRACKET
31	SAW BLADE CLAMPING PIN
32	TORSION SPRING
33	TORSION SPRING MOUNTING BASE
34	RUBBER DUST SHIELD BLOCK
35	FELT DUST WIPER
36	FELT WIPER REINFORCEMENT FRAME
37	SLIDE ROD LINEAR BUSHING
38	SLIDE ROD SUBASSEMBLY
39	ROTATING SUPPORT SUBASSEMBLY
40	PHILLIPS PAN HEAD SELF-LOCKING TAPPING SCREW
41	GEARBOX LOWER HOUSING
42	PHILLIPS PAN HEAD SCREW
43	TORX PAN HEAD FLAT TIP SELF-TAPPING SCREW
44	RIGHT TEARDROP LABEL
45	MACHINE CASE
46	SHADOWLESS LIGHT MODULE
47	FORWARD/REVERSE LEVER
48	SIGNAL MICROSWITCH
49	SPEED REGULATION LABEL
50	GEAR ADJUSTMENT COVER PLATE
51	BLDC CONTROLLER ECU
52	LEFT TEARDROP LABEL
101	SLIDE ROD MAIN ASSEMBLY
1001	GEARBOX LOWER HOUSING SUBASSEMBLY
1002	GEARBOX UPPER HOUSING SUBASSEMBLY
10001	GEARBOX FINAL ASSEMBLY