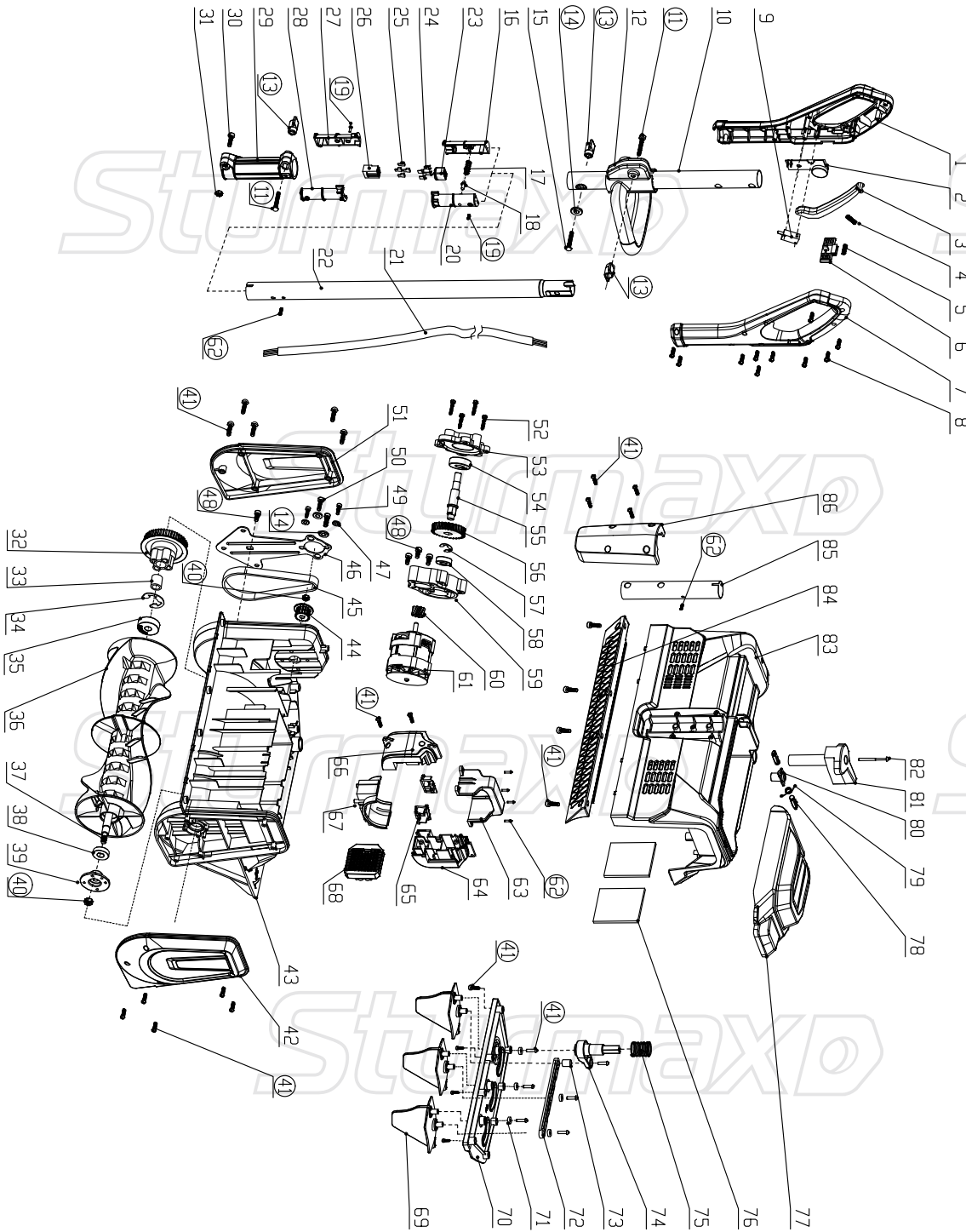


# SPM9040CR



No.	Description	No.	Description
1	Rear armrest left hinge cover	44	Small synchronous wheel
2	governor	45	Belt
3	trigger	46	Motor fixing plate
4	trigger spring	47	Gasket
5	Anti self-locking spring	48	screw M5*40
6	Anti self-locking button	49	screw M5*12
7	Rear armrest right cover	50	screw M6*40
8	screw ST3.5*14	51	Left cover plate
9	Start switch	52	screw M5*16
10	Upper connecting pipe $\phi 30 \times 340$	53	Reducer cover
11	hexagonal screw M6*40	54	bearing 6000
12	Handle tube front armrest	55	output shaft
13	Lock nut fixing seat	56	30 driven teeth
14	Gasket $\phi 6 \times 12 \times 1.6$	57	Retaining ring $\phi 10$
15	screw M6*40	58	bearing 698
16	Male plug fixing sleeve left shell	59	Reducer box
17	Self-locking pin spring	60	Driving gear
18	Self-locking pin	61	Motor assembly
19	screw ST2.9*10	62	screws ST4.2*12
20	Male plug fixing sleeve right shell	63	Battery box cover
21	wire rod	64	Battery pack holder - left
22	Middle connecting pipe	65	Battery pack pins
23	Male plug	66	Battery pack holder - right
24	6.3 Insert	67	Battery box base
25	6.3 Square Insert Spring	68	Controller assembly
26	Female plug	69	Turning blade
27	Female plug fixing sleeve left shell	70	Steering fixing plate
28	Female plug fixing sleeve right shell	71	Steering blade gasket
29	Handle connection seat	72	Steering rod
30	screw M6-16	73	Connecting rod fixing column
31	screw M6	74	Blade connecting rod
32	Datong Step Wheel	75	Steering gear spring
33	Needle bearing	76	Dust proof sponge
34	Retaining ring $\phi 12$	77	Battery box upper cover
35	bearing 6301	78	Resale
36	Snow sweeping roller	79	Battery box upper cover button spring
37	principal axis	80	Rotary pin gland
38	bearing 6001	81	Steering handle
39	Fixed seat on the left side of the spindle	82	Cross recessed pan head screw
40	screw M8	83	Body cover
41	screw ST4.2*16	84	Scraping the floor
42	Right cover plate	85	Lower connecting pipe
43	Main engine	86	Handle tube gland