

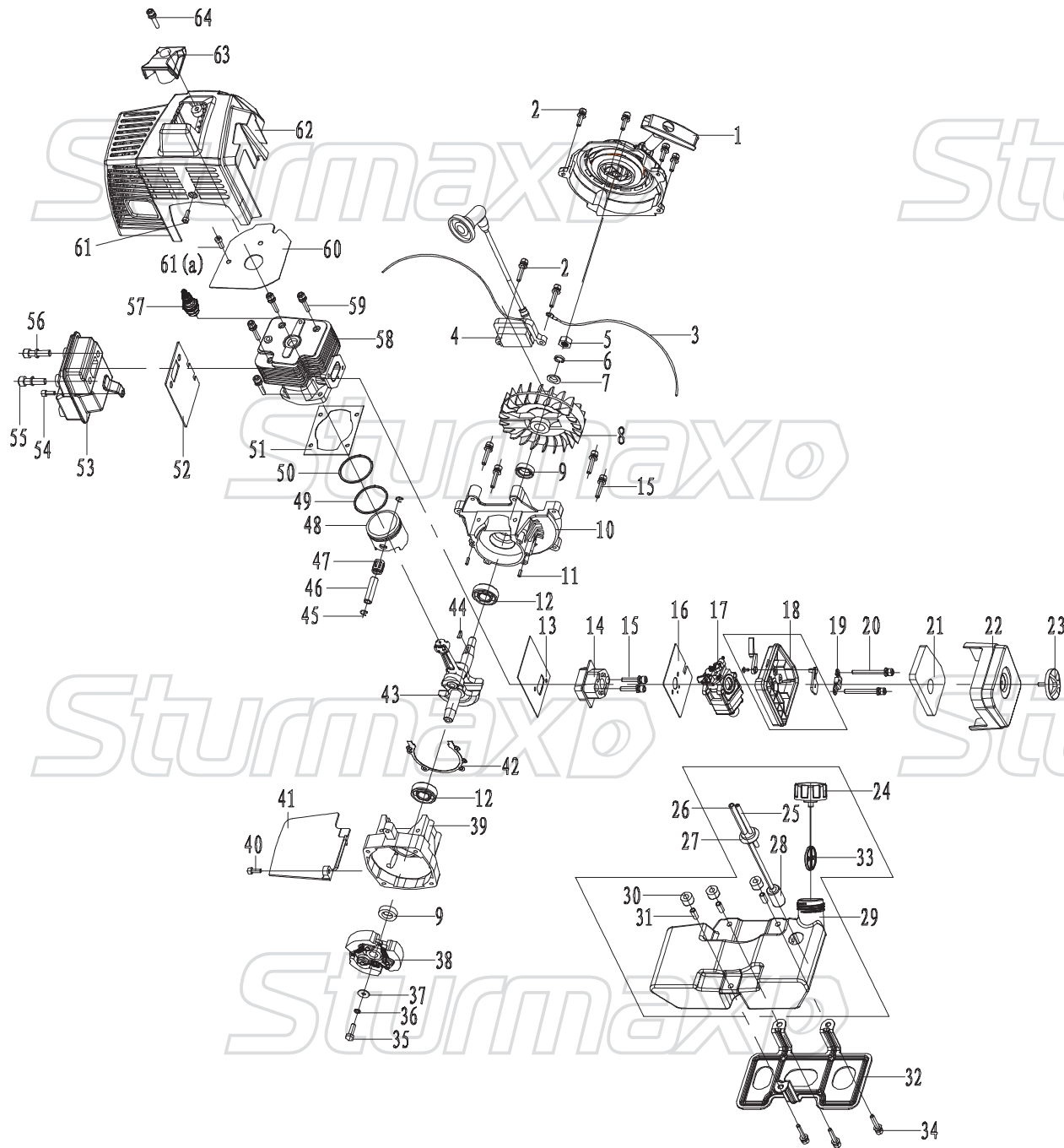
Sturmaxx

EAM1564

NO.	DESCRIPTION
1	ENGINE BASE
2	RUBBER PAD
3	HANDLE BRACKET
4	CLUTCH TRAY
5	GEAR BOX COVER
6	BEARING R10
7	SNAP RING
8	PIN
9	48 TEETH GEAR
10	44 TEETH GEAR
11	MIDDLE SHAFT
12	PAPER WASHER
13	GEAR BOX
14	SCREW M6X55
15	SPINDLE
16	BEARING 6004
17	SCREW M6X30
18	7 TEETH SHAFT
19	SWITCH
20	HANDLE
21	SCREW M6X30
22	R12 BEARING
23	SCREW M6X20

EAM1564-EX-UK240428-1

Sturmaxx



ENGINE FOR EAM1564

NO.	DESCRIPTION	NO.	DESCRIPTION
1	STARTER ASSY	34	SCREW M5X30
2	SCREW M5X20	35	SCREW M6X20
3	FLAMEOUT LINE	36	SPRING WASHER Ø6
4	COIL	37	FLAT WASHER Ø6*16*1.6
5	NUT M10*1	38	CLUCH ASSY
6	SPRING WASHER	39	CRANKSHAFT CASE L
7	FLAT WASHER	40	SCREW M5X12
8	FLYING WHEEL	41	GUARD PLATE
9	OIL SEAL 15*25*6	42	GASKET
10	CRANKSHAFT CASE R	43	CRANKSHAFT ASSY
11	LOCATING PIN Ø4*8	44	PIN 3*5*13
12	BEARING 6202	45	PISTON PIN SPING
13	GASKET	46	PISTON PIN
14	INLET PIPE	47	BEARING K101414.5
15	SCREW M5X30	48	PISTON
16	GASKET	49	PISTON RING 2
17	CARBURETER	50	PISTON RING 1(BEVEL)
18	AIR FIULTER SEAT	51	GASKET
19	AIR FIULTER CLASP	52	GASKET
20	SCREW M5*55	53	MUFLLER
21	AIR FIULTER SPONGE	54	SCREW M5*12
22	AIR FIULTER COVER	55	SCREW M8*30
23	plastic nut	56	SPRING WASHER Ø8
24	FUEL TANK ASSY	57	SPARK PLUG
25	FUEL BACK PIPE	58	CYLINDER
26	FUEL PIPE	59	SCREW M5X25
27	FUEL PIPE SEAT	60	HEAT SHIELD
28	FUEL FIULTER	61	SCREW M5X16
29	TANK	61(a)	SCREW M5X12
30	DAMPING RUBBER	62	CYLINDER COVER
31	PROTECTOR Ø5.5X7X16.5	63	TOP COVER
32	TANK PROTECTOR	64	SCREW M5X20
33	HANGING EAR		

EAM1564-EX-UK240428-1