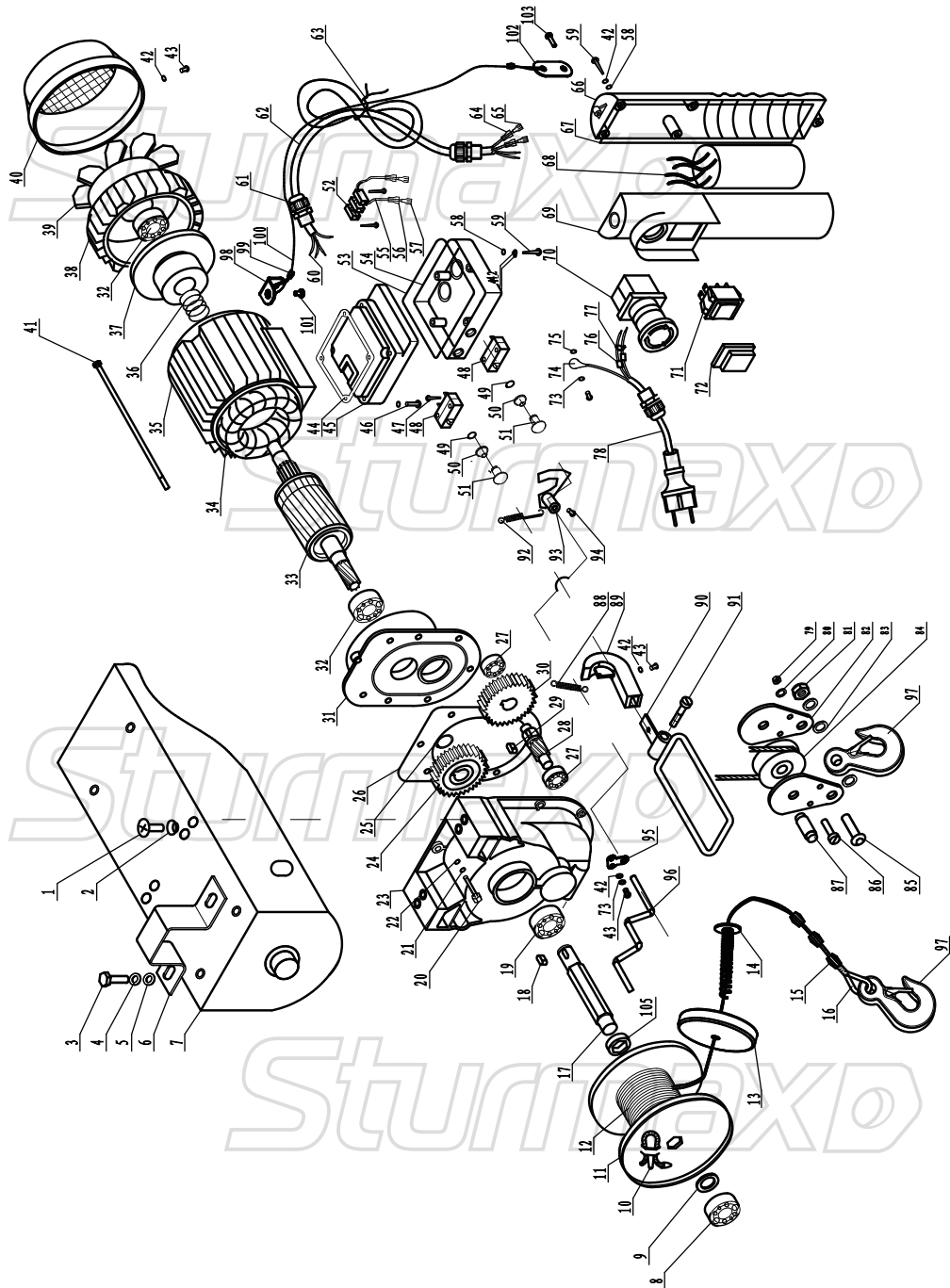


EHM7250



NO.	DESCRIPTION	NO.	DESCRIPTION
1	SOCKET SUNK HEAD SCREW	54	UP COVER OF JUNCTION BOX
2	SUBULATE TOOTH-WASHER	55	ELICITING LINE
3	OUTER HEX BOLT	56	PLUG-IN REED JACKET
4	SPRING WASHER	57	PLUG-IN REED
5	WASHER	58	RUBBER LOOP
6	FASTEN CLAMP	59	CROSS PAN HEAD TAPPING SCREW
7	HOUSING COVER	60	COPPER HEAD
8	ROLLING BEARING6203	61	ANTI-KINK DEVICE OF CABLE LINE
9	SHAFT WASHER FOR ROPE DRUM	62	CABLE LINE
10	ROPE PIN	63	BINDING
11	ROPE DRUM	64	PLUG-IN REED JACKET
12	STEEL WIRE ROPE	65	PLUG-IN REED
13	BALANCE WEIGHT	66	LOWER COVER OF CONTROLLING HANDLE
14	UPPER LIMIT OF BIT FRAME COMPONENTS	67	AIRPROOF LOOP OF CONTROLLING HANDLE
15	ALUMINUM BUCKLE	68	CAPACITOR
16	PROTECTIVE LOOP FOR STEEL WIRE ROPE	69	UP COVER OF CONTROLLING HANDLE
17	SOCKET SHAFT FOR ROPE DRUM	70	EMERGENCY STOP SWITCH
18	FLAT KEY	71	BILATERAL SWITCH
19	ROLLING BEARING6203	72	WATERPROOF COVER
20	OUTER HEX BOLT	73	SPRING WASHER
21	SPRING WASHER	74	TERMINAL PIECE
22	FLAT WASHER	75	TOOTH WASHER
23	GEAR BOX	76	TUBE
24	SMALL HELICAL GEAR	77	NYLON BINDING
25	SNAP RING	78	WATERPROOF PLUG AND CABLE LINE
26	PAPER WASHER	79	LOCKNUT
27	ROLLING BEARING6201	80	FLAT WASHER
28	GEAR DRIVING SHAFT	81	LOCKNUT
29	FLAT KEY	82	PULLEY PLYWOOD
30	BIG HELICAL GEAR	83	PULLEY WASHER
31	FRONT HOUSING COVER	84	PULLEY
32	ROLLING BEARING 6202	85	OUTER HEX BOLT
33	ROTOR	86	COLUMN NUT
34	STATOR	87	PULLEY SHAFT
35	MOTOR HOUSING	88	REED OF POSITION LIMITED SWITCH
36	BRAKE SPRING	89	TIE-IN OF POSITION LIMITED SWITCH
37	BRAKE ASSEMBLY	90	POSITION LIMITED BRACKET
38	BACK HOUSING COVER	91	SOCKET SCREW
39	FAN	92	UP REED OF POSITION LIMITED SWITCH
40	FAN COVER	93	LIMITED POSITION SLICE
41	OUTER HEX BOLT	94	OUTER HEX BOLT
42	FLAT WASHER	95	LIMITED POSITION SLICE
43	CROSS PAN HEAD SCREW	96	DOWN LIMITED POSITION POLE
44	LOWER AIRPROOF LOOP OF JUNCTION BOX	97	HOOK
45	LOWER COVER OF JUNCTION BOX	98	BRACKETS (BENDING)
46	CROSS PAN HEAD SCREW	99	ALUMINUM BUCKLE
47	CROSS PAN HEAD TAPPING SCREW	100	STEEL WIRE ROPE
48	POSITION LIMITED SWITCH	101	CROSS PAN HEAD SCREW
49	SNAP RING	102	BRACKETS (STRAIGHT)
50	BUTTON SPRING LOOP	103	CROSS PAN HEAD SCREW
51	POSITION LIMITED BUTTON	105	SHAFT WASHER FOR ROPE DRUM
52	CONNECTION ENDING		
53	UP AIRPROOF LOOP OF JUNCTION BOX		