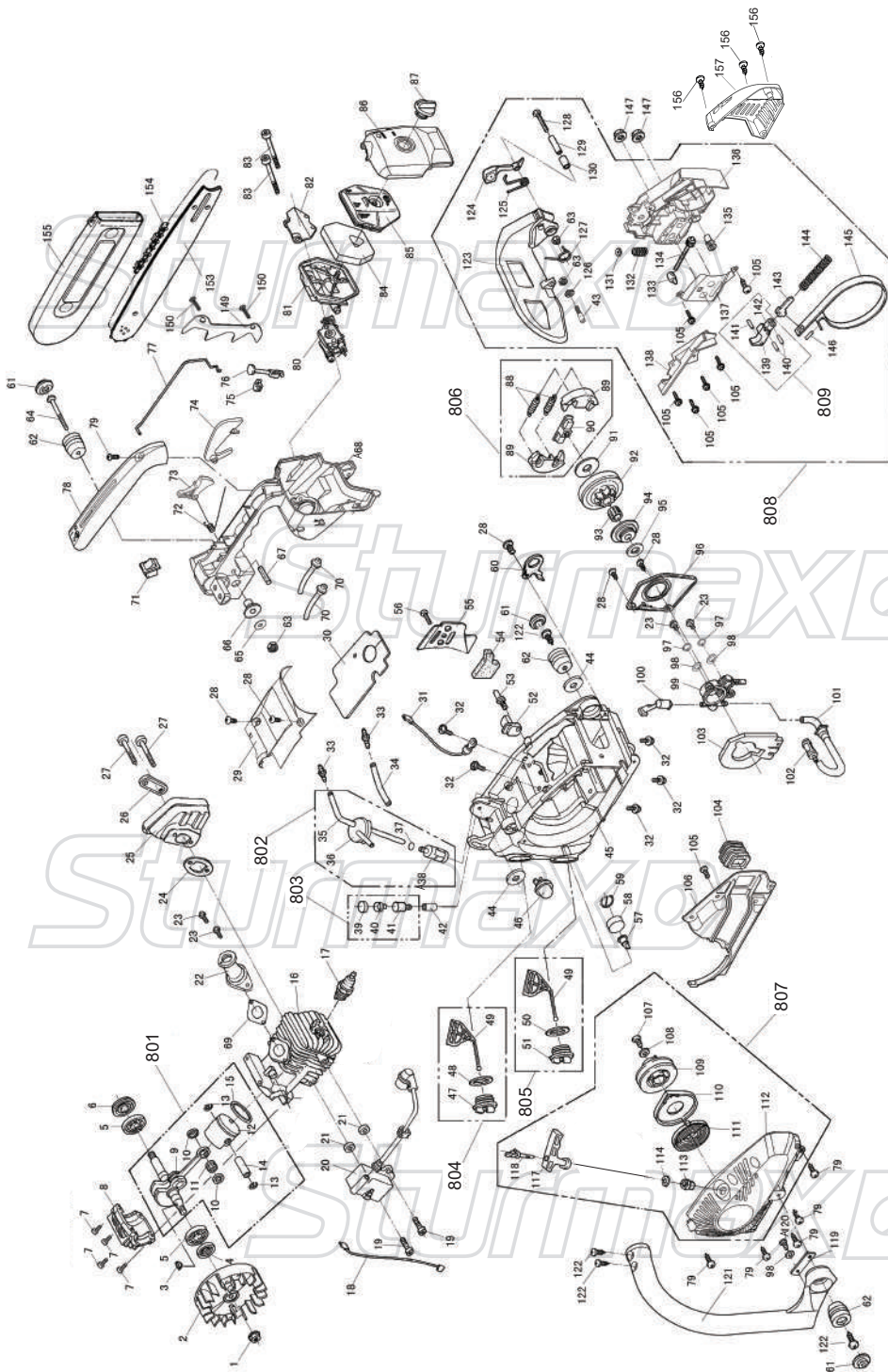


GCM9912



NO.	DESCRIPTION	NO.	DESCRIPTION	NO.	DESCRIPTION
1	NUT M8x1	56	SCREW ST4.2x11	111	STARTER SPRING
2	FLYWHEEL-ASSY	57	BREATH NIPPLE	112	STARTER HOUSING
3	WOODRUFF KEY3x10	58	BREATH NIPPLE COVER	113	ROPE JACKET
4	SMALL OIL SEAL 12x22x4.5	59	BREATH NIPPLE SPRING	114	WASHER-STARTER HANDLE
5	BALL BEARING 6001Z	60	POTHOOK	117	STARTER HANDLE
6	BIG OIL SEAL 12x28x6	61	RUBBER PAD COVER	118	STARTER ROPE
7	SCREW M5x20	62	PAD	119	PAD RUBBER SUPPOTR
8	CRANKCASE BEARING SUPPORT	63	NUT M5	120	SCREW ST3.5x10
9	CRANK SHAFT ASSY	64	SCREW M5x45	121	HANDLE ASST
10	NEEDLE BEARING SNAP	65	WASHER	122	SCREW ST4.8x16
11	NEEDLE BEARING	66	COVER CAP	123	FRONT GUARD
12	PISTON	67	TRIGGER PIN 5x26	124	LEVERAGE
13	PIN CIRCLIP	68	HANDLE	125	LEVERAGE SPRING
14	PISTON PIN	69	INTAKE GASKET	126	SPRING WASHER
15	PISTON RING	70	CARBURATOR PIPE	127	BRAKE SPRING
16	CYLINDER	71	SWITCH STOP	128	SCREW M5x30
17	SPARK PLUG	72	TRIGGER SPRING	129	BUSHING
18	FLAMEOUT WIRE	73	TRIGGER	130	LEVERAGE PIN
19	SCREW M4x20	74	TRIGGER LEVER	131	BRAKE SPRING SUPPORT
20	ELECTRON IGNITION ASSY	75	CHOKE KNOB GROMMET	132	FORNT GUARD SPRING
21	PAPER GASKET	76	CHOKE KNOB	133	CHAIN ADJUSTING PIN
22	INTAKE HOSE	77	ROD THROTTLE	134	CHAIN ADJUSTING SPROCKET
23	SCREW M4x14	78	REAR HANDLE COVER	135	CHAIN ADJUSTING SCREW
24	MUFFLER WASHER	79	SCRW ST4.2x16	136	RIGHT COVER
25	MUFFLER ASSY	80	CHINESE CARBURATOR ASSY	137	CHAIN ADJUSTING COVER
26	MUFFLER COVER	81	AIR FILTER SUPPORT	138	SPRING BRAKE COVER
27	SCREW M5x40	82	AIR FILTER COVER	139	MAIN LEVER
28	SCREW ST4.2x13	83	SCREW M5x45	140	SHORT PIN
29	TOP COVER	84	AIR FILTER SPONGE	141	LONG PIN
30	PAPER GASKET	85	AIR FILTER SPONGE COVER	142	AUXILIARY LEVER
31	GROUND WIRE	86	AIR FILTER COVER	143	BREAK LEVEL
32	SCREW M5x16	87	AIR FILTER KNOB	144	BRAKE SPRING
33	HOSE ADAPTER	88	CLUTCH SPRING	145	BAND BRAKE
34	OIL RETURN PIPE	89	CLUTCH SUPPORT	146	PIN
35	FUEL HOSE	90	CLUTCH RETAINER	147	BAR NUT
36	FUEL HOSE SUPPORT	91	CLUTCH WASHER	149	SPIKE
37	CONNECT PIPE CLIP	92	CLUTCH DRUM	150	SCREW ST4.8x14
38	FUEL FILTER	93	CLUTCH NEEDLE BEARING	153	GUIDE BAR
39	BALANCE COVER	94	WORM	154	CHAIN
40	BALANCE BODY	95	OIL PUMP WASHER	155	BAR PROTECTOR
41	BALANCE HOUSING	96	OIL PUMP COVER	156	SCREW
42	BALANCE CONNECTOR	97	SPRING WASHER	157	SIDE COVER
43	PIN	98	WASHER	801	CRANK SHAFT AND PISTON ASSY
44	WASHER	99	OIL PUMP ASSY	802	FUEL FILTER ASSY
45	FUEL TANK	100	FUEL INJECTION NOZZLE	803	BALANCE ASSY
46	PRIMER BULB	101	OIL INLET HOSE	804	FUEL CAP ASSY
47	FUEL CAP	102	OIL FILTER	805	OIL CAP ASSY
48	FUEL CAP WASHER	103	DUSTPROOF SPONGE	806	CLUTCH ASSY
49	OIL CAP HOLDING	104	AIR INTAKE SUPPORT	807	STARTER ASSY
50	OIL CAP WASHER	105	SCREW ST4.2x8.5	808	BRAKE ASSY
51	OIL CAP	106	FAN BAFFLE	809	MAIN AND AUXILIARY LEVER ASSY
52	CHAIN CATCHER	107	SCREW ST4.8x16		
53	SCREW	108	WASHER φ5x15x1.5		
54	BAR PLATE SPONGE	109	PULLEY STARTER		
55	BAR PLATE	110	SPRING COVER		