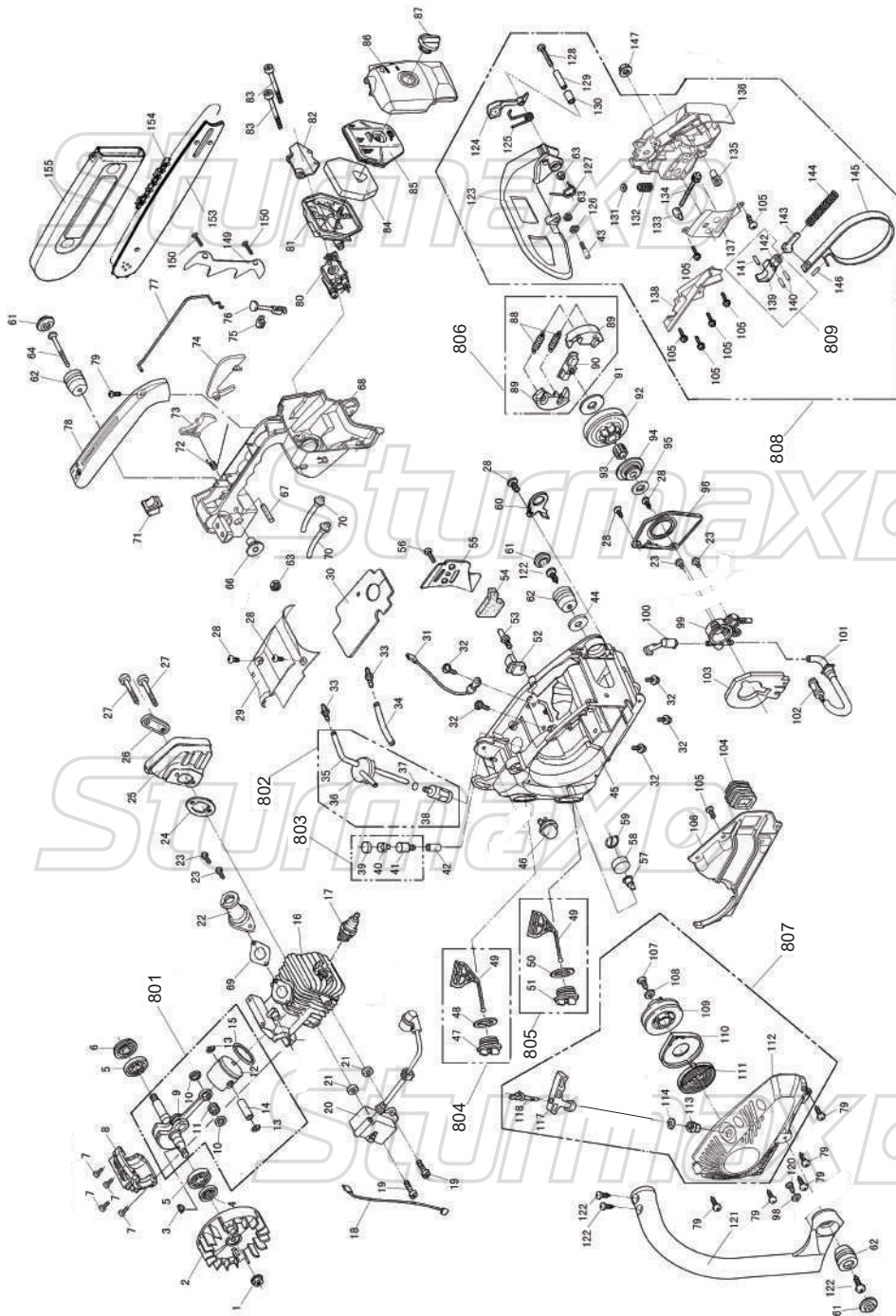


GCM9912S



NO.	DESCRIPTION	NO.	DESCRIPTION	NO.	DESCRIPTION
1	NUT M8x1	56	SCREW ST4.2x11	111	STARTER SPRING
2	FLYWHEEL-ASSY	57	BREATH NIPPLE	112	STARTER HOUSING
3	WOODRUFF KEY3x10	58	BREATH NIPPLE COVER	113	ROPE JACKET
4	SMALL OIL SEAL 12x22x4.5	59	BREATH NIPPLE SPRING	114	WASHER-STARTER HANDLE
5	BALL BEARING 6001Z	60	POTHOOK	117	STARTER HANDLE
6	BIG OIL SEAL 12x28x6	61	RUBBER PAD COVER	118	STARTER ROPE
7	SCREW M5x20	62	PAD	120	SCREW ST3.5x10
8	CRANKCASE BEARING SUPPORT	63	NUT M5	121	HANDLE ASST
9	CRANK SHAFT ASSY	64	SCREW M5x45	122	SCREW ST4.8x16
10	NEEDLE BEARING SNAP	66	COVER CAP	123	FRONT GUARD
11	NEEDLE BEARING	67	TRIGGER PIN 5x26	124	LEVERAGE
12	PISTON	68	HANDLE	125	LEVERAGE SPRING
13	PIN CIRCLIP	69	INTAKE GASKET	126	SPRING WASHER
14	PISTON PIN	70	CARBURATOR PIPE	127	BRAKE SPRING
15	PISTON RING	71	SWITCH STOP	128	SCREW M5x30
16	CYLINDER	72	TRIGGER SPRING	129	BUSHING
17	SPARK PLUG	73	TRIGGER	130	LEVERAGE PIN
18	FLAMEOUT WIRE	74	TRIGGER LEVER	131	BRAKE SPRING SUPPORT
19	SCREW M4x20	75	CHOKE KNOB GROMMET	132	FORNT GUARD SPRING
20	ELECTRON IGNITION ASSY	76	CHOKE KNOB	133	CHAIN ADJUSTING PIN
21	PAPER GASKET	77	ROD THROTTLE	134	CHAIN ADJUSTING SPROCKET
22	INTAKE HOSE	78	REAR HANDLE COVER	135	CHAIN ADJUSTING SCREW
23	SCREW M4x14	79	SCRW ST4.2x16	136	RIGHT COVER
24	MUFFLER WASHER	80	CHINESE CARBURATOR ASSY	137	CHAIN ADJUSTING COVER
25	MUFFLER ASSY	81	AIR FILTER SUPPORT	138	SPRING BRAKE COVER
26	MUFFLER COVER	82	AIR FILTER COVER	139	MAIN LEVER
27	SCREW M5x40	83	SCREW M5x45	140	SHORT PIN
28	SCREW ST4.2x13	84	AIR FILTER SPONGE	141	LONG PIN
29	TOP COVER	85	AIR FILTER SPONGE COVER	142	AUXILIARY LEVER
30	PAPER GASKET	86	AIR FILTER COVER	143	BREAK LEVEL
31	GROUND WIRE	87	AIR FILTER KNOB	144	BRAKE SPRING
32	SCREW M5x16	88	CLUTCH SPRING	145	BAND BRAKE
33	HOSE ADAPTER	89	CLUTCH SUPPORT	146	PIN
34	OIL RETURN PIPE	90	CLUTCH RETAINER	147	BAR NUT
35	FUEL HOSE	91	CLUTCH WASHER	149	SPIKE
36	FUEL HOSE SUPPORT	92	CLUTCH DRUM	150	SCREW ST4.8x14
37	CONNECT PIPE CLIP	93	CLUTCH NEEDLE BEARING	153	GUIDE BAR
38	FUEL FILTER	94	WORM	154	CHAIN
39	BALANCE COVER	95	OIL PUMP WASHER	155	BAR PROTECTOR
40	BALANCE BODY	96	OIL PUMP COVER	801	CRANK SHAFT AND PISTON ASSY
41	BALANCE HOUSING	99	OIL PUMP ASSY	802	FUEL FILTER ASSY
42	BALANCE CONNECTOR	100	FUEL INJECTION NOZZLE	803	BALANCE ASSY
43	PIN	101	OIL INLET HOSE	804	FUEL CAP ASSY
45	FUEL TANK	102	OIL FILTER	805	OIL CAP ASSY
46	PRIMER BULB	103	DUSTPROOF SPONGE	806	CLUTCH ASSY
47	FUEL CAP	104	AIR INTAKE SUPPORT	807	STARTER ASSY
48	FUEL CAP WASHER	105	SCREW ST4.2x8.5	808	BRAKE ASSY
49	OIL CAP HOLDING	106	FAN BAFFLE	809	MAIN AND AUXILIARY LEVER ASSY
50	OIL CAP WASHER	107	SCREW ST4.8x16		
51	OIL CAP	108	WASHER φ5x15x1.5		
52	CHAIN CATCHER	109	PULLEY STARTER		
53	SCREW	110	SPRING COVER		
54	BAR PLATE SPONGE				
55	BAR PLATE				